

Preparing Our Future in a Changing Climate

Official Plan Workshop

What are your priorities for a climate friendly vision for Caledon? Rank each question out of 5.

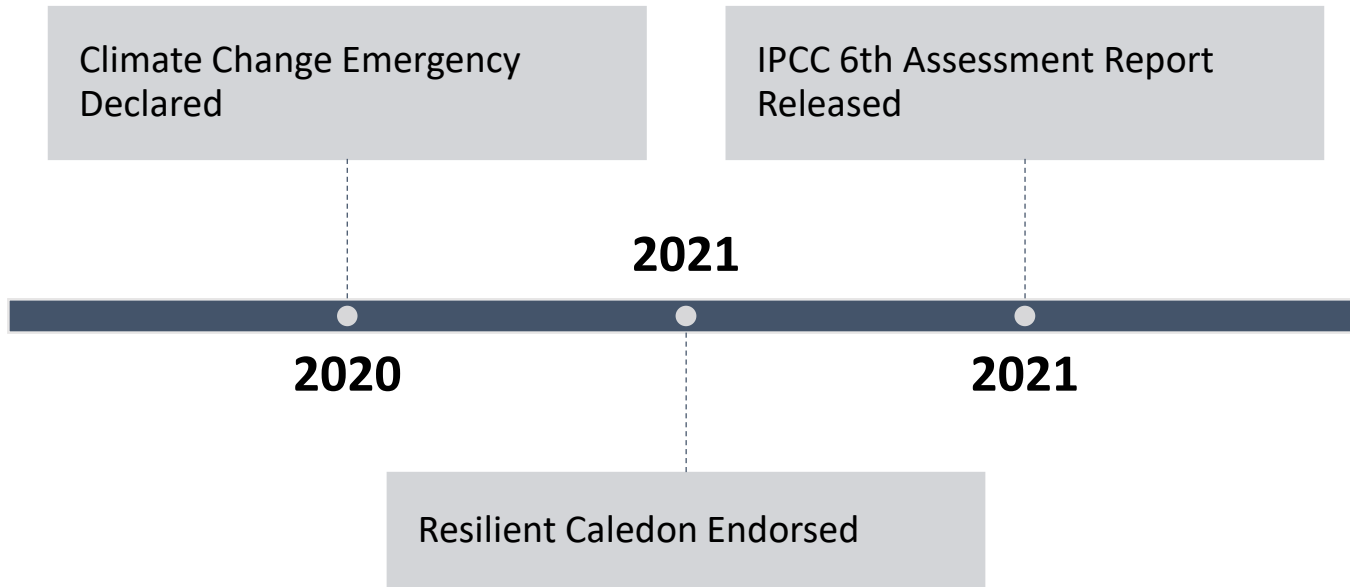
Step 1 visit www.menti.com

Step 2 enter user code 7153 6166

Step 3 enter your response!



OUR CLIMATE CHANGE PRIORITIES



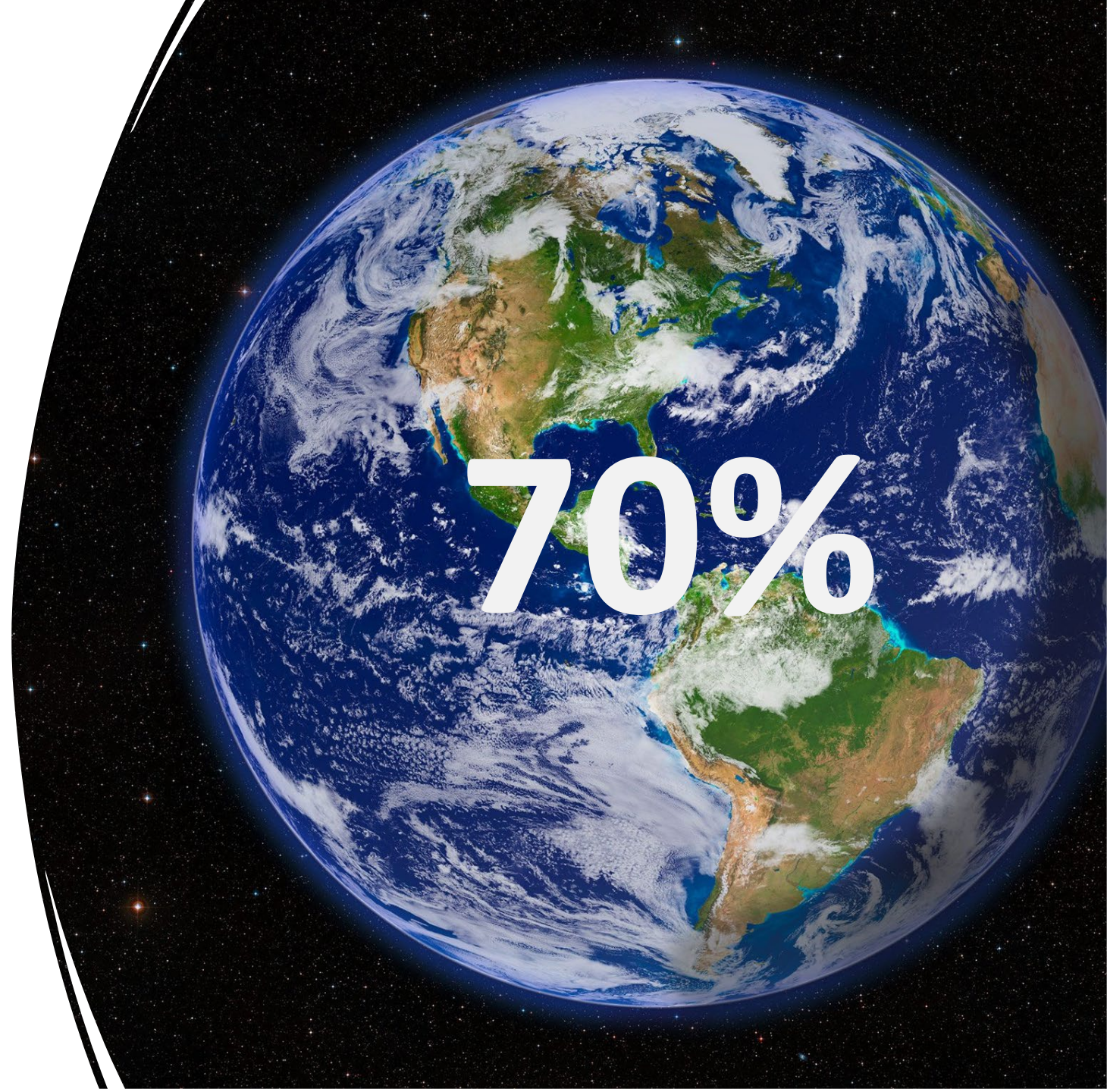
RESILIENT CALEDON

Community Climate Change Action Plan

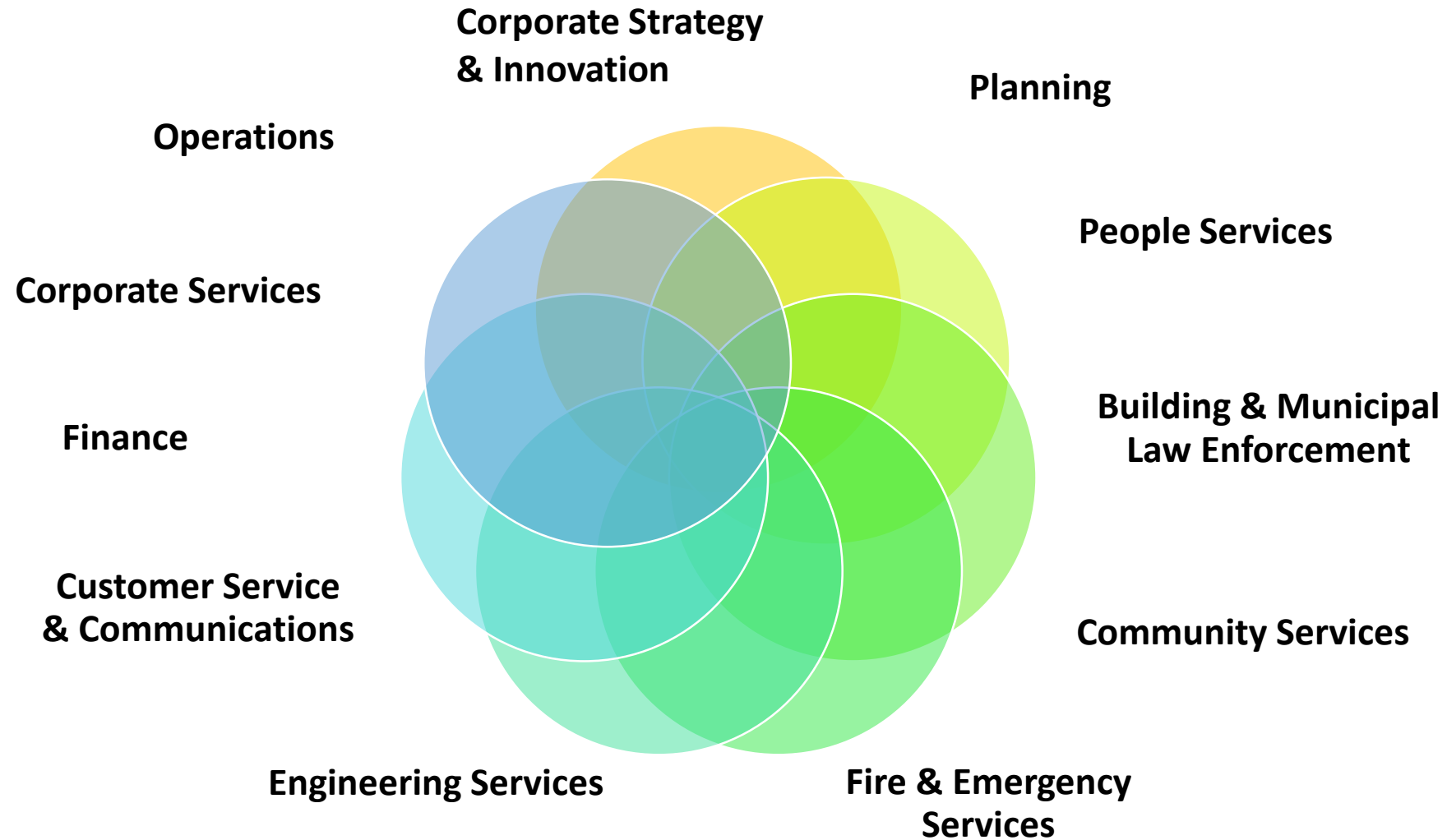
ipcc
INTERGOVERNMENTAL PANEL ON climate change

Climate Change 2021
The Physical Science Basis

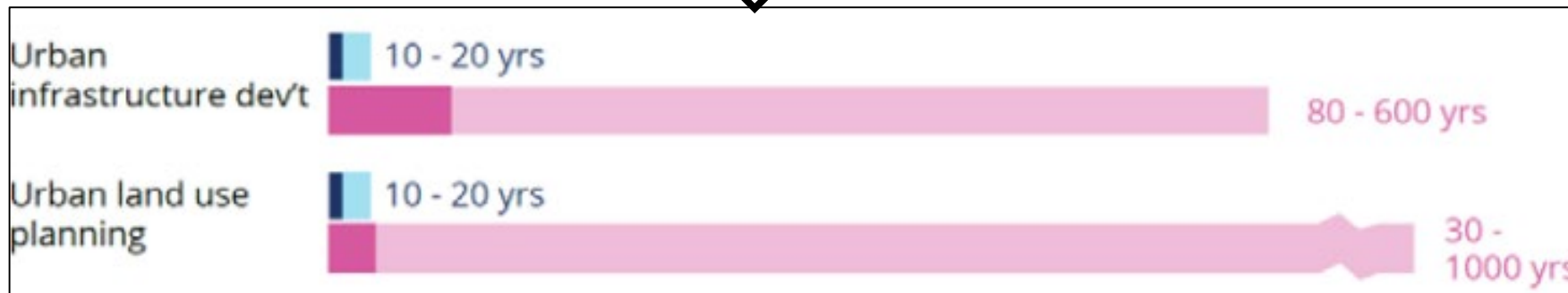
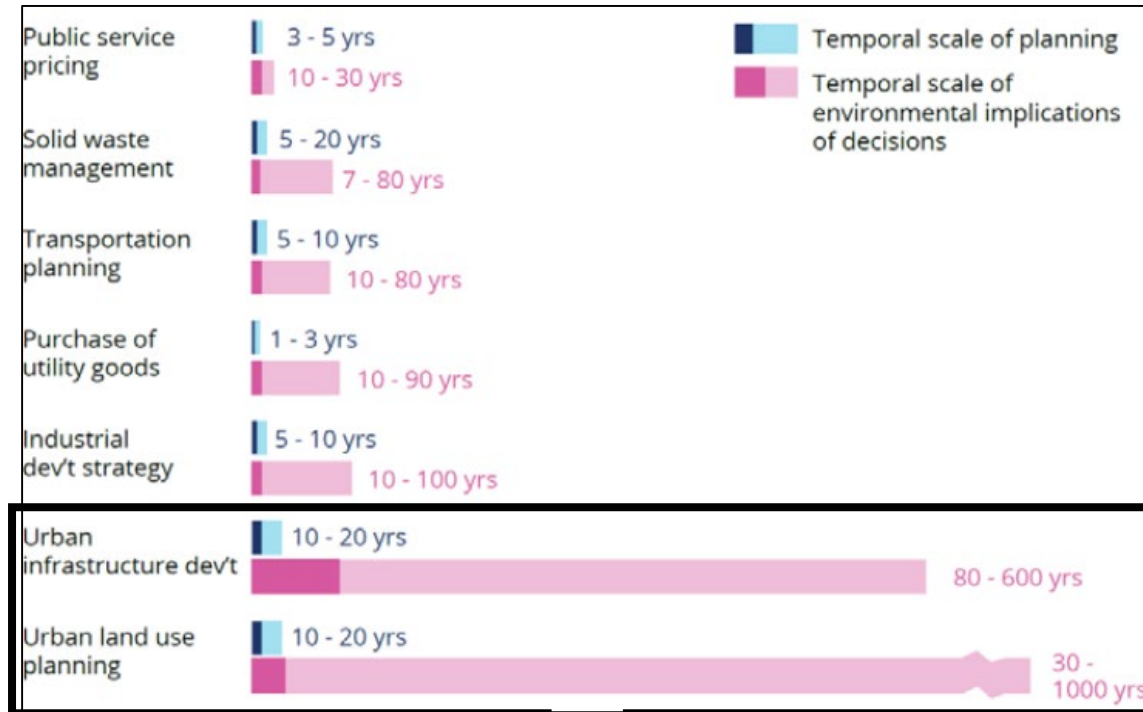
Why is This
Important?



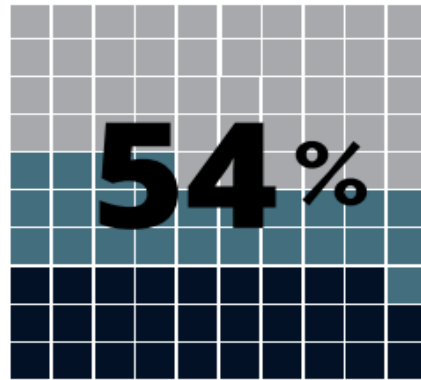
All of Government Approach



Role of Land Use Decisions



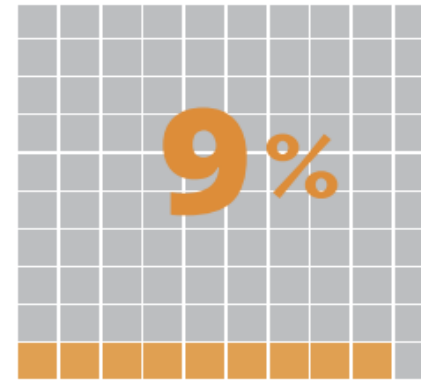
Caledon's Emissions Inventory



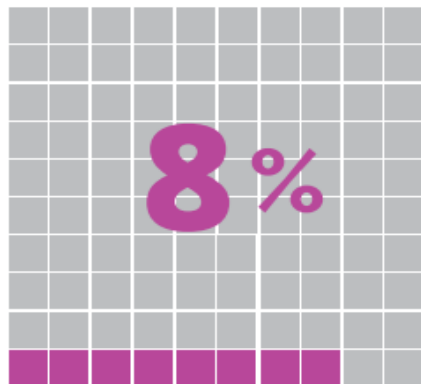
Transportation
Commercial + Residential



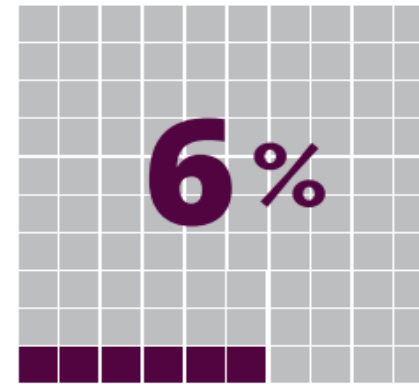
Residential buildings



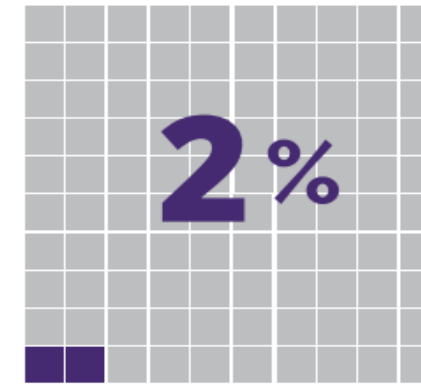
Commercial buildings



Waste

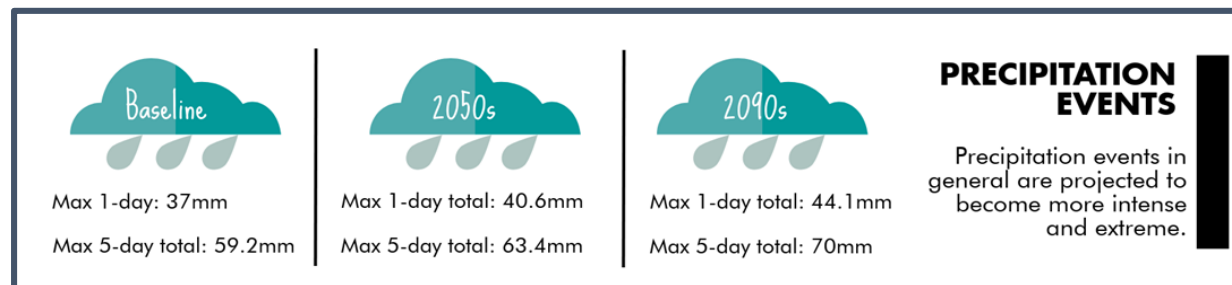
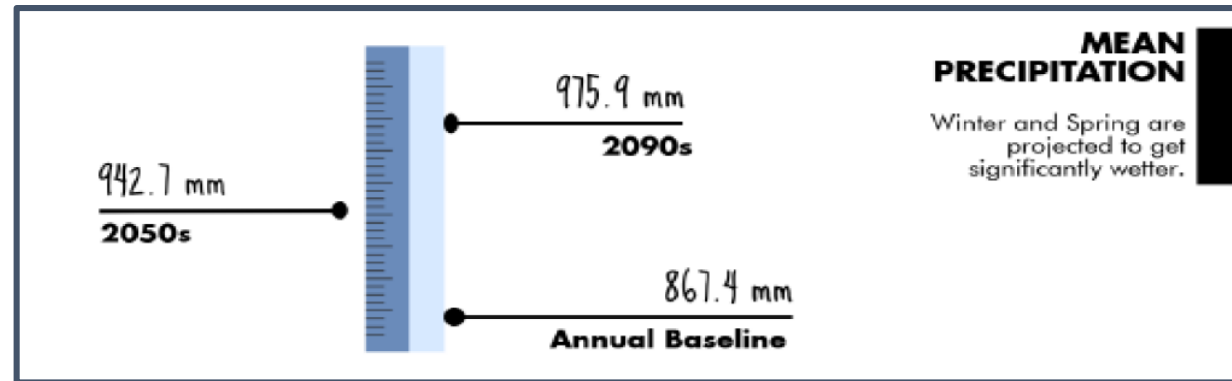
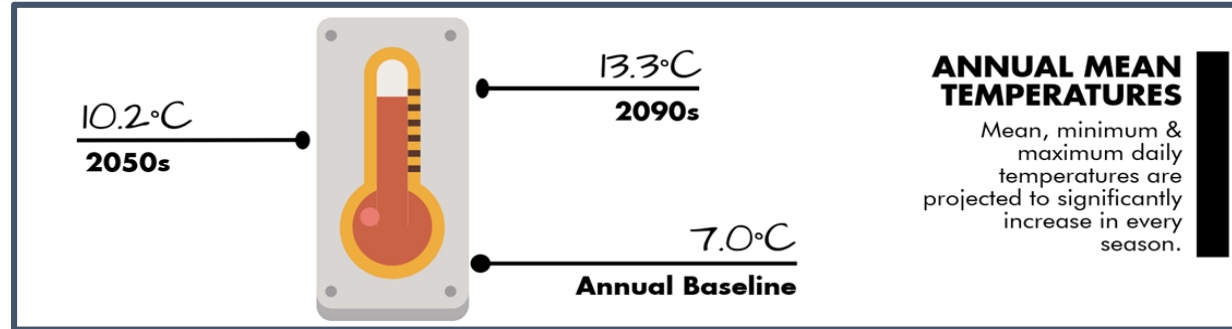


Agriculture



Industry

Caledon's Climate Forecast



Windstorm causes power outages across the region



CTV Barrie: Hydro lines down

Conservation Area Update CVC Conservation Areas CVC in the

Your Caledon
@YourCaledon

Following

With more rain coming, @CVC_CA issues another flood watch. #Caledon

CreditValleyCA @CVC_CA

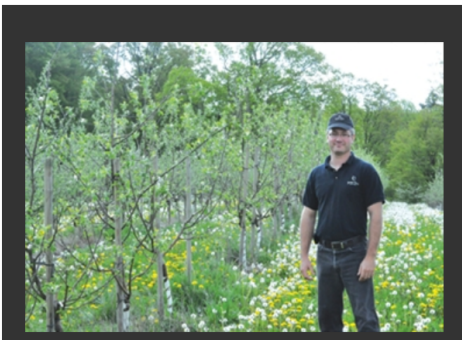
FLOOD WATCH: With water levels high & saturated soil conditions, the forecasted rain may increase watercourses to above bankfull levels.

2:41 PM - 3 May 2017

Caledon apple crops decimated by erratic weather, huge losses expected

Caledon Enterprise
By Andrew Livingstone, Enterprise Staff

In more than three decades of involvement in the apple industry, Tom Wilson has never seen the widespread loss experienced by apple growers this season. "This bad, I don't think I can even remember," he said. "Not in my time do I ever remember having it this bad. In 20 or 30 years I haven't seen it like this. There have been some springs where it came on, but it hasn't been this widespread." Luckily for the owner of Spirit Tree Estate Cidery on Boston Mills Road – which produced 40,000 pounds of apples in 2011 and is expected to produce close to 100,000 this year – Wilson approximates he lost only 20 per cent of his seasonal crop of apples. "We're lucky in some ways," he said. "We have damage, but where we've placed our orchard, we're on the south face of the escarpment. We're a bit of a microclimate and have good air



706appletrees_1WEB



CaledonEnterprise
@CaledonNews

Follow

Ice storm knocks out power, leaves parts of #Caledon in the dark #icestorm2016 bit.ly/1SI0Rps

8:31 AM - 25 Mar 2016

10 7

Aug 02, 2015 | Vote 0 0

Storm knocks down trees across Caledon

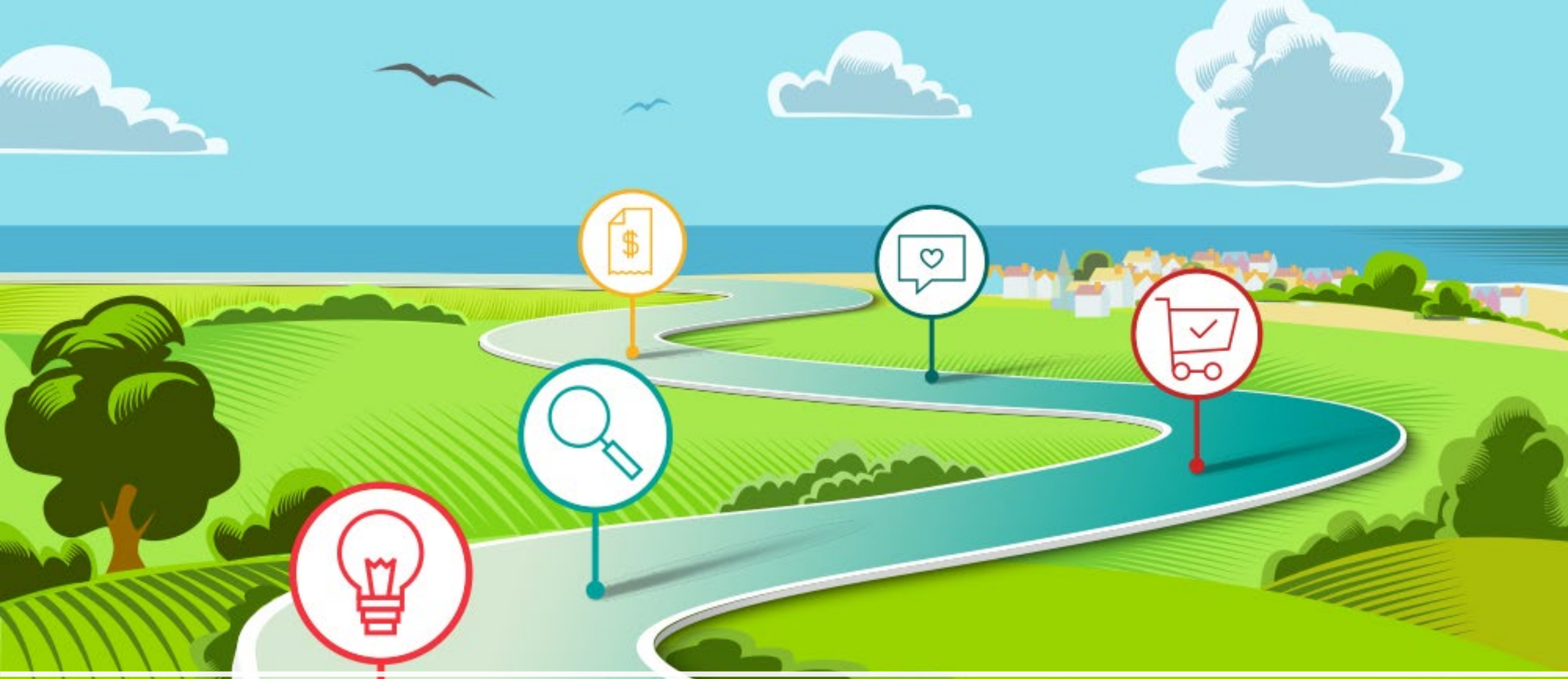
Caledon Enterprise
By Robyn Wilkinson

Caledon and surrounding areas remained under a severe thunderstorm warning Sunday evening (Aug. 2) at approximately 7:30 p.m. According to Environment Canada, a significant, widespread severe weather situation was underway across part of Southern Ontario. Thunderstorms hit several nearby communities and produced heavy wind and rain, downing trees and hydro lines and left homes without power. Environment Canada warned that the storms were capable of producing "very strong wind gusts, large hail and heavy rain, and Isolated brief tornadoes are also possible." Several people turned to social media during the storm to report dark clouds in the sky and downed trees. A number took photos of trees that had toppled over in the storm. Environment Canada reminded residents to be prepared for severe weather and to take cover if threatening weather approaches.



Caledon Village flooding
Contributed photos
Flooding has been reported in Caledon Village as water levels rise.

Climate Change is Here



I'm Going to Take You On A Journey, Imagine a Resilient Future Caledon

How We Get There?

Establish

- Climate change lens as a foundation for all policies in the Official Plan
- Section dedicated to Climate Change
- Stronger language around climate change Policies

Integrate

- Council endorsed climate change targets and climate projections

Built Environment

Traditional Planning

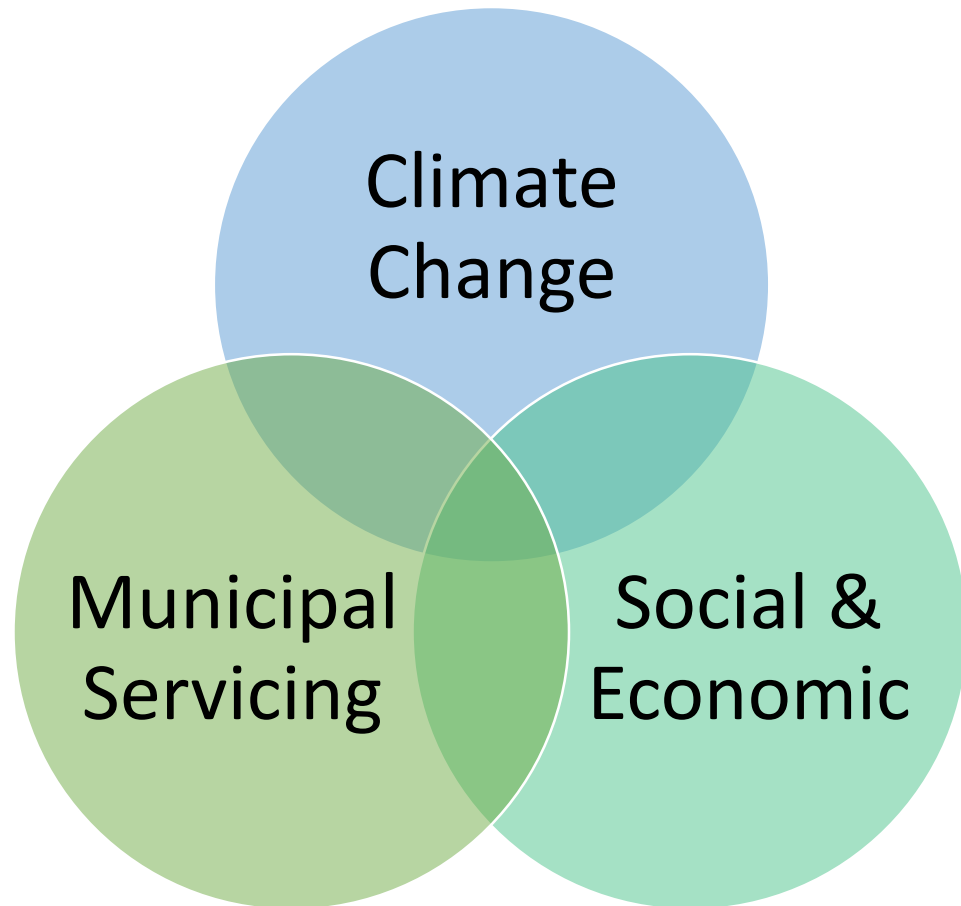


Climate Change Lens





How Important is Density?



Built Form: How Do We Get There?



15 minute neighbourhood design



Increase density and intensification



Promote secondary suites



Require carbon neutral plans for new development



Implement green development standards



Enact a green roof by-law



Introduce programs to retrofit existing buildings



Built Form: Discussion Questions

- What do you think of the direction presented?
- What do neighbourhoods in Caledon look like by 2050?
- What are some of the challenges and opportunities that we should consider with designing these policies?

Low Carbon Transportation

Traditional Planning



Climate Change Lens



Low Carbon Transportation: How Do We Get There?



Incorporate requirements for transit-oriented development



Develop a safe and robust active transportation network



Require electric vehicle charging infrastructure



Establish minimum bicycle and vehicle parking requirements



Introduce policies to enable carshare and carpooling



Promote density and intensification to support transit



Incorporate transit and active transportation retrofits as part of capital projects



Introduce Complete Streets policies and design guidelines



Low Carbon Transportation: Discussion Questions

- What do you think about the direction recommended?
- How do you imagine people and goods moving around Caledon in 2050?
- What are the opportunities and challenges in how we get there?

Natural Environment & Agriculture

Traditional Planning



Climate Change Lens



Natural Environment & Agriculture: How Do We Get There?



Introduce policies to protect and enhance trees



Incorporate parkland acquisition policies



Work with partners to protect and enhance the natural heritage system



Protect areas adjacent to natural heritage features



Encourage higher density development to reduce encroachment on natural and agricultural lands



Promote diversification and innovation of the agricultural economy



Develop partnerships that support farming practices to reduce emissions and adapt to climate risk

Aggregate Resources



What are aggregate resources?

Includes gravel, sand, clay, earth, shale, stone, limestone, dolostone, sandstone, marble, granite, rock or other materials prescribed under the *Aggregate Resources Act*.

What is the Region doing?

- Ensuring that Regional Official Plan policies are consistent with provincial plans and policies
- Ensuring that Regional Official Plan Schedule C reflects the updated Provincial bedrock mapping produced by the Ministry of Northern Development and Mines
- Considering further policy direction related to aggregate conservation, aggregate recycling and aggregate rehabilitation best practices research and guidance from agencies such as the Ministry of Natural Resources and Forestry, non-governmental organizations and aggregate associations

Why are aggregate resource policies important?

- Mineral aggregate resources form an important component of Peel's economy
- Identify and protect high potential mineral aggregate resource areas
- Protect Peel's communities and environmental and cultural features from potential adverse impacts associated with mineral aggregate resources extraction
- Support rehabilitation of resource extraction sites

Regional Official Plan policies will...

- Conform with and implement Provincial policy direction
- Reflect updated Provincial bedrock mapping
- Incorporate modern approaches to aggregates planning

What About Aggregate?

- Town Policies will align with the Regional aggregate policies;
- Reducing aggregate extraction contribution to climate change includes:
 - Increase recycled content;
 - Reduce emissions from the processing and transport of aggregate (embodied carbon);
 - Strengthen aggregate rehabilitation plans to reintroduce trees & natural heritage features.



Natural Environment & Agriculture: Discussion Questions

- What does Caledon's natural environment look like in 2050?
- What does a thriving and resilient agriculture economy look like in 2050?
- What are some challenges and opportunities with the proposed policy recommendations?

Resilient Communities

Traditional Planning



Climate Change Lens



Resilient Communities: How Do We Get There?



Enhance urban tree canopy to reduce heat island effect & sequester carbon



Introduce sustainable financing tools to operate and maintain a robust stormwater system



Enhance emergency management planning to prepare for extreme weather



Enhance stormwater management through green infrastructure



Apply a climate change lens to stormwater and asset management plans



Restrict develop in high-risk areas



Encourage eco-industrial and innovation districts through an eco-zoning by law



Resilient Communities: Discussion Questions

- What does Caledon's employment sector like to you in 2050?
- What do you think Caledon's priorities be in preparing for and responding to extreme weather?

(1) Do you think these policy recommendations help to address the climate change emergency?

(2) What are we missing?



Next Steps



Memorandum to Council with the Climate Change Discussion Paper and Public Summary on December 6th



Receive general feedback on *Have Your Say Caledon* webpage



Incorporate recommendations into the Official Plan



Key Takeaways?

- We have a big opportunity to address the climate change emergency in **how and where we grow**
- We are out of time-we have a very small **critical window** to take **significant action** to address climate change



Closing Remarks

Next Steps

- Official Plan update report to Planning and Development Committee November 30;
- Updates on other studies November 30 and December 6;
- Planning next public engagement on Future Caledon for December.