

ASI

TOWN OF CALEDON ARCHAEOLOGICAL MANAGEMENT PLAN



Prepared for:

The Corporation of the Town of Caledon
6311 Old Church Road, Caledon, ON L7C 1J6

**FUTURE
CALEDON**
OUR OFFICIAL PLAN


ASI Providing Archaeological &
Cultural Heritage Services
528 Bathurst Street Toronto, ONTARIO M5S 2P9
T416-966-1069 F416-966-9723 asiheritage.ca

Town of Caledon

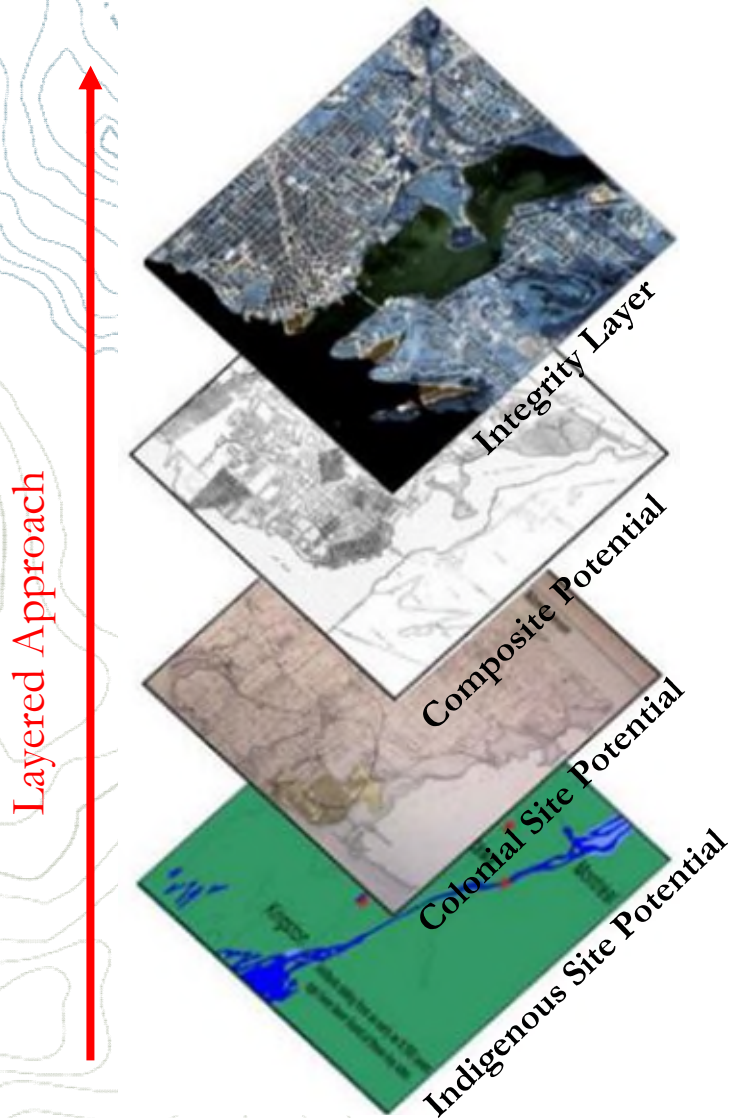
Archaeological Management Plan

**Planning & Development Committee
Meeting 06DEC21**

Presented by
Dr. Robert MacDonald
Managing Partner



Caledon AMP



An AMP is a **tool created for the municipal planning approval process**

- Step 1: **Inventory** known archaeological sites
- Step 2: **Model and map** archaeological potential
- Step 3: **Test** draft models
- Step 4: **Recommend** planning policy

Caledon AMP

AMP Framework

Part I: Potential model for pre-contact Indigenous and historical sites

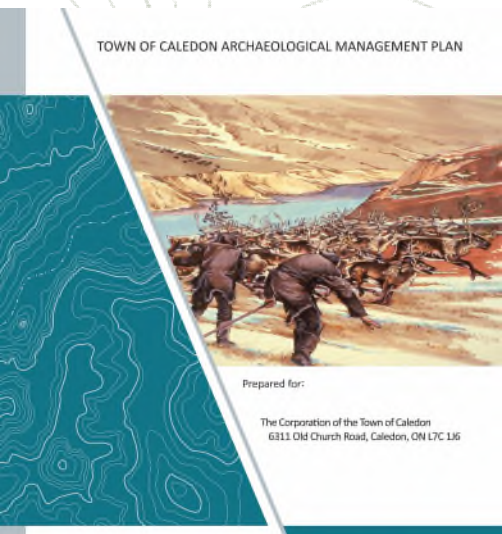
Part II: Archaeological resource management

Appendix A: Pre-contact Indigenous Archaeological Site Potential

Appendix B: Colonial Period Settlement and Land Use

Appendix C: Contingency Plan for the Protection of Archaeological Resources in Urgent Situations

Appendix D: Proposed Policy Revisions to the Town's Official Plan



Caledon AMP

Ontario's Statutory Framework:

Archaeological Heritage Planning

- **Planning Act & Provincial Policy Statement**
- Environmental Assessment Act
- Ontario Heritage Act
- Renewable Energy Approvals Regulation
- Aggregate Resources Act
- Funeral, Burial and Cremation Services Act
- Greenbelt Act and Greenbelt Plan
- Niagara Escarpment Planning and Development Act/Plan
- Places to Grow Act and Growth Plan for the Greater Golden Horseshoe
- Oak Ridges Moraine Conservation Act/Plan
- Regional Conservation Authorities

Caledon AMP

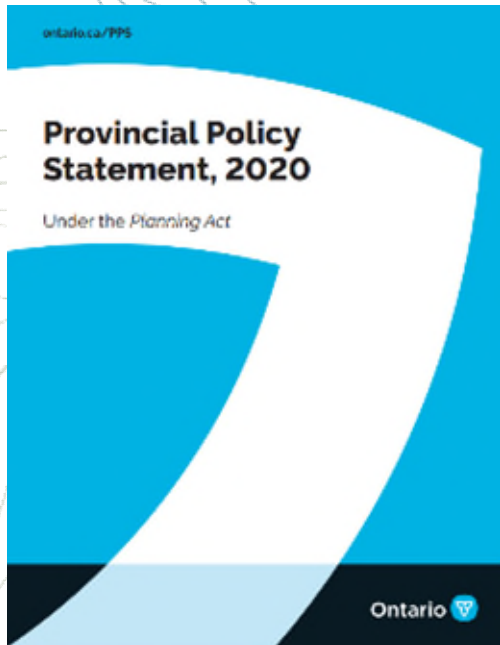
Provincial Policy Statement (2020)

2.6 Cultural Heritage and Archaeology

2.6.2 Development and site alteration **shall not be permitted** on lands containing archaeological resources or areas of archaeological potential unless significant archaeological resources have been conserved.

2.6.4 Planning authorities **should consider and promote** archaeological management plans and cultural plans in conserving cultural heritage and archaeological resources.

2.6.5 Planning authorities **shall engage with Indigenous communities and consider their interests** when identifying, protecting and managing cultural heritage and archaeological resources.

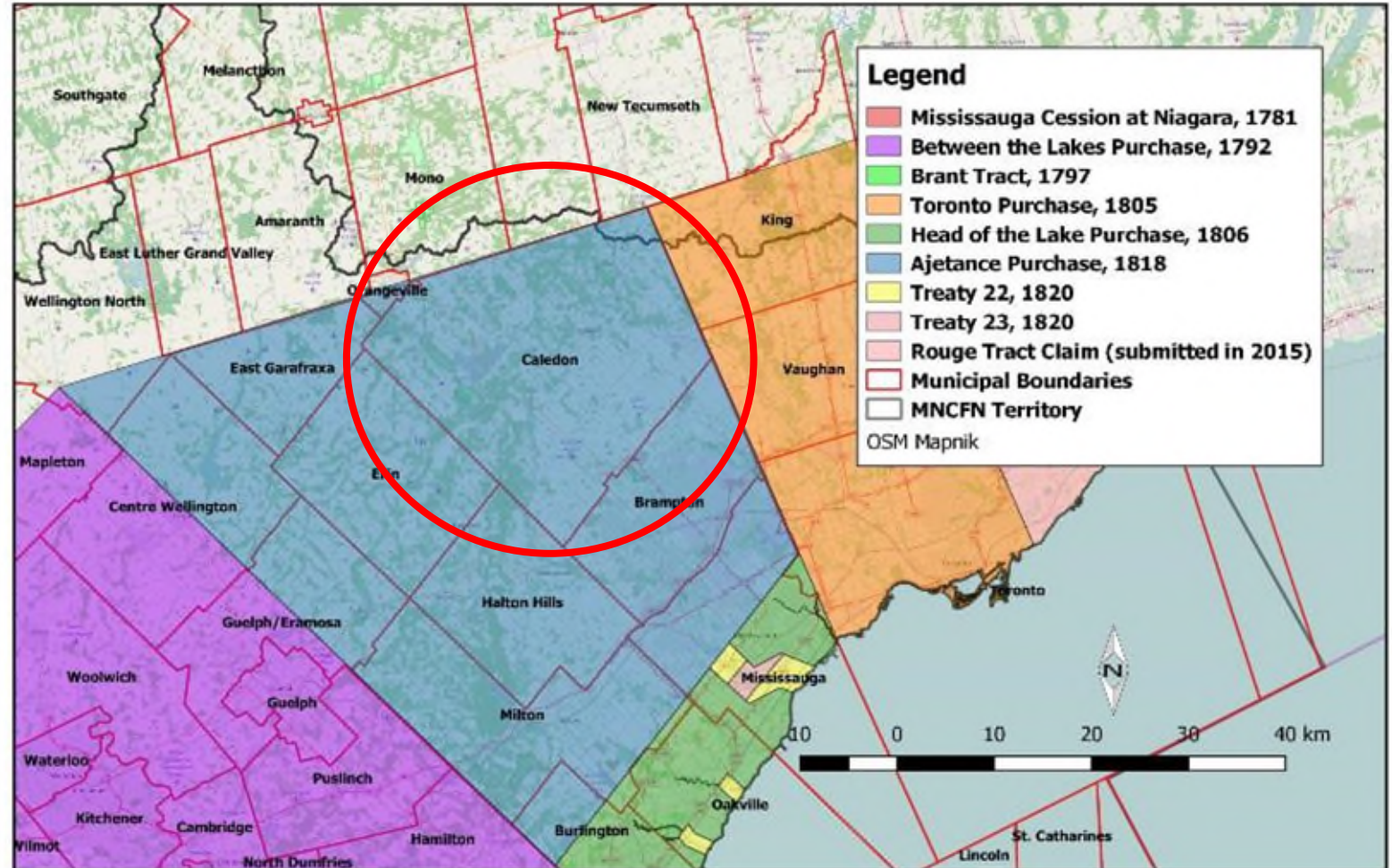


Caledon AMP

**Treaty Territory:
Ajetance Purchase 1818
(Treaty #19)**

Traditional Territory

Historical Territory



Municipal Boundaries Related to the Ajetance Purchase (1818)



Caledon AMP

Archaeological Potential Model: GIS Layer for Pre-contact Indigenous Sites

TOWN OF CALEDON ARCHAEOLOGICAL MANAGEMENT PLAN



Prepared for:

The Corporation of the Town of Caledon
6311 Old Church Road, Caledon, ON L7C 1J6

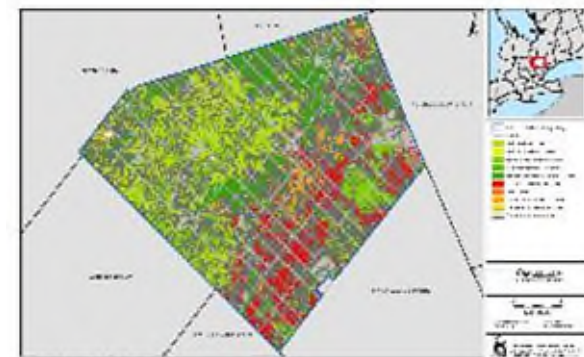
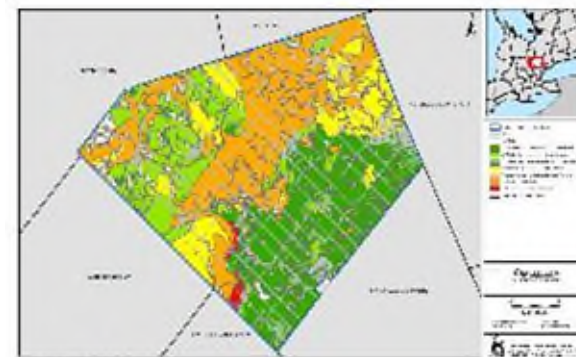
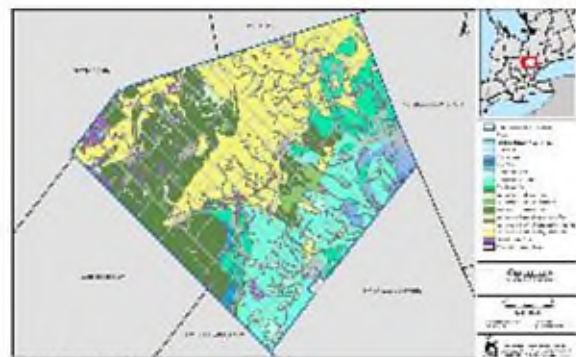
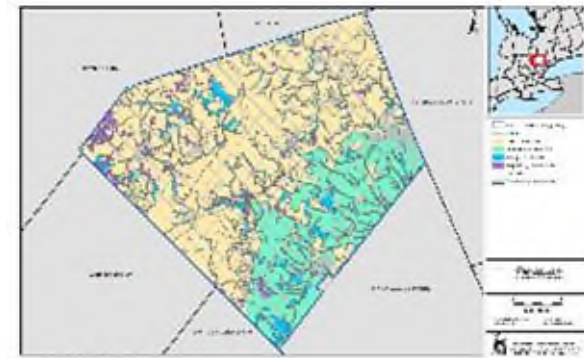
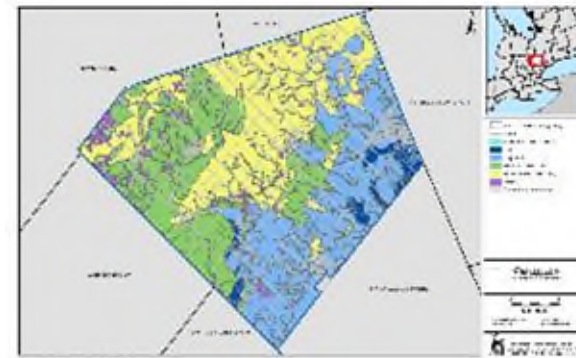
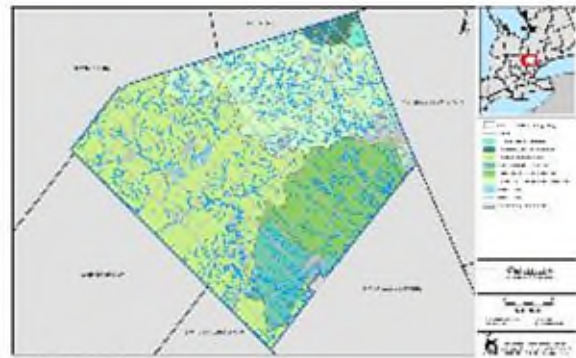
**FUTURE
CALEDON**
OUR OFFICIAL PLAN


ASI
Providing Archaeological &
Cultural Heritage Services
528 Bathurst Street Toronto, ONTARIO M5S 2P9
T 416-966-1069 F 416-966-9723 asiheritage.ca

Caledon AMP

Human Paleoecology

Analysis of environmental change and adaptive land use over 13,000 years of human occupation



Caledon AMP

Pre-contact Indigenous Settlement Trends by Period

**All 127 Indigenous sites,
representing all time
periods, used for modeling**

5 sites	ca. 13,000 – 11,000 Cal. BP
9 sites	ca. 11,000 – 9,000 Cal. BP
15 sites	ca. 9,000 – 5,000 Cal. BP
15 sites	ca. 5,000 – 3,000 Cal. BP
15 sites	ca. 3,000 – 1,000 Cal. BP
3 sites	ca. 1,000 – 400 Cal. BP

Caledon AMP

Pre-contact Indigenous Archaeological Potential Layer

250 metres from
water captures 100%
of the pre-contact
Indigenous sites

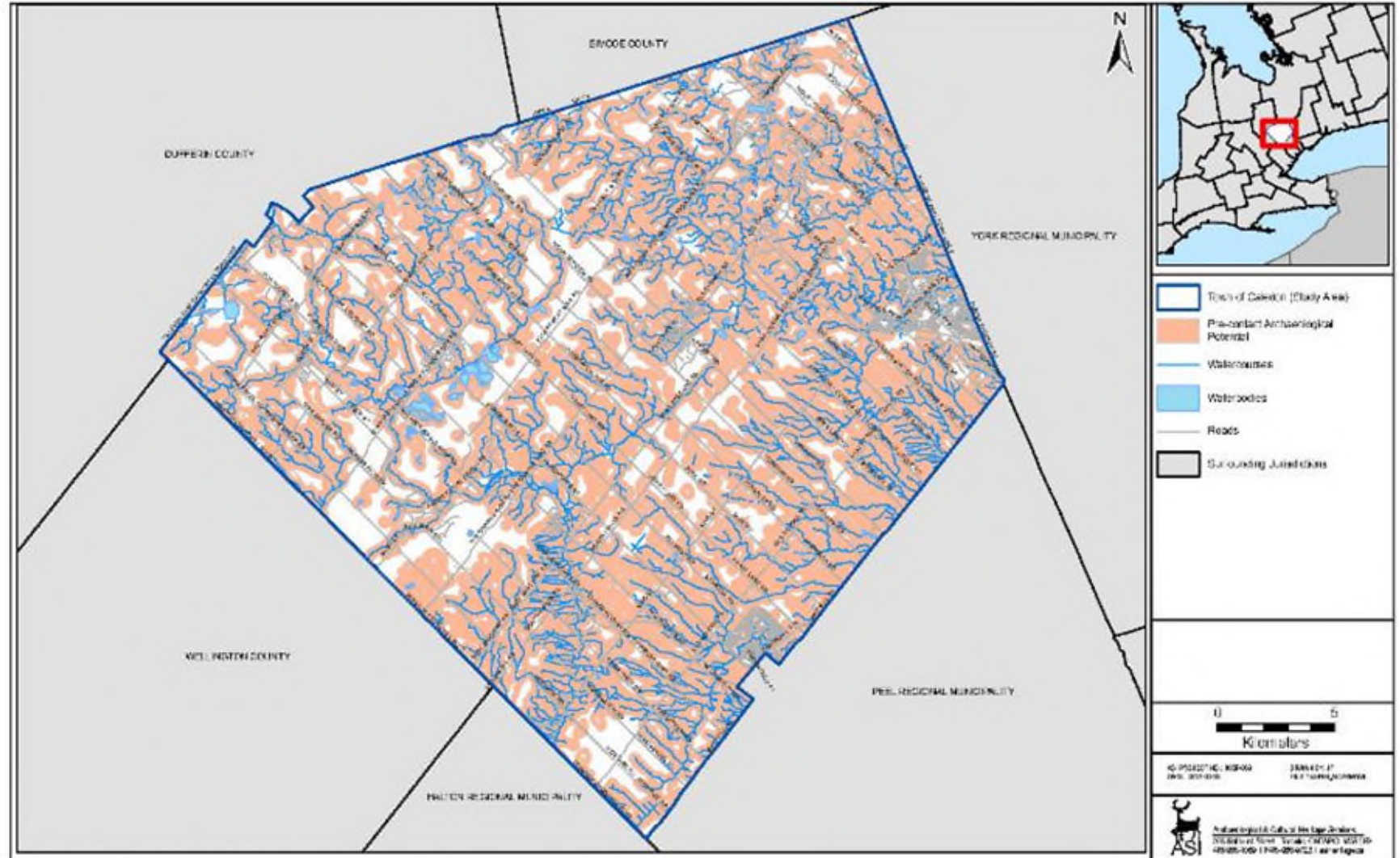


Figure 2: Pre-Contact Indigenous Archaeological Site Potential Layer



Caledon AMP

Archaeological Potential Model: GIS Layer for Colonial Period Sites

TOWN OF CALEDON ARCHAEOLOGICAL MANAGEMENT PLAN



Prepared for:

The Corporation of the Town of Caledon
6311 Old Church Road, Caledon, ON L7C 1J6

**FUTURE
CALEDON**
OUR OFFICIAL PLAN


ASI
Providing Archaeological &
Cultural Heritage Services
528 Bathurst Street Toronto, ONTARIO M5S 2P9
T416-966-1069 F416-966-9723 asiheritage.ca

Caledon AMP

Colonial Period Model

Historical Mapping

Thematic History

- **2,205 features** of historical interest
- **57 settlement centres**

Cemeteries

- **62 cemeteries**

Caledon AMP

Colonial Period Archaeological Potential Layer

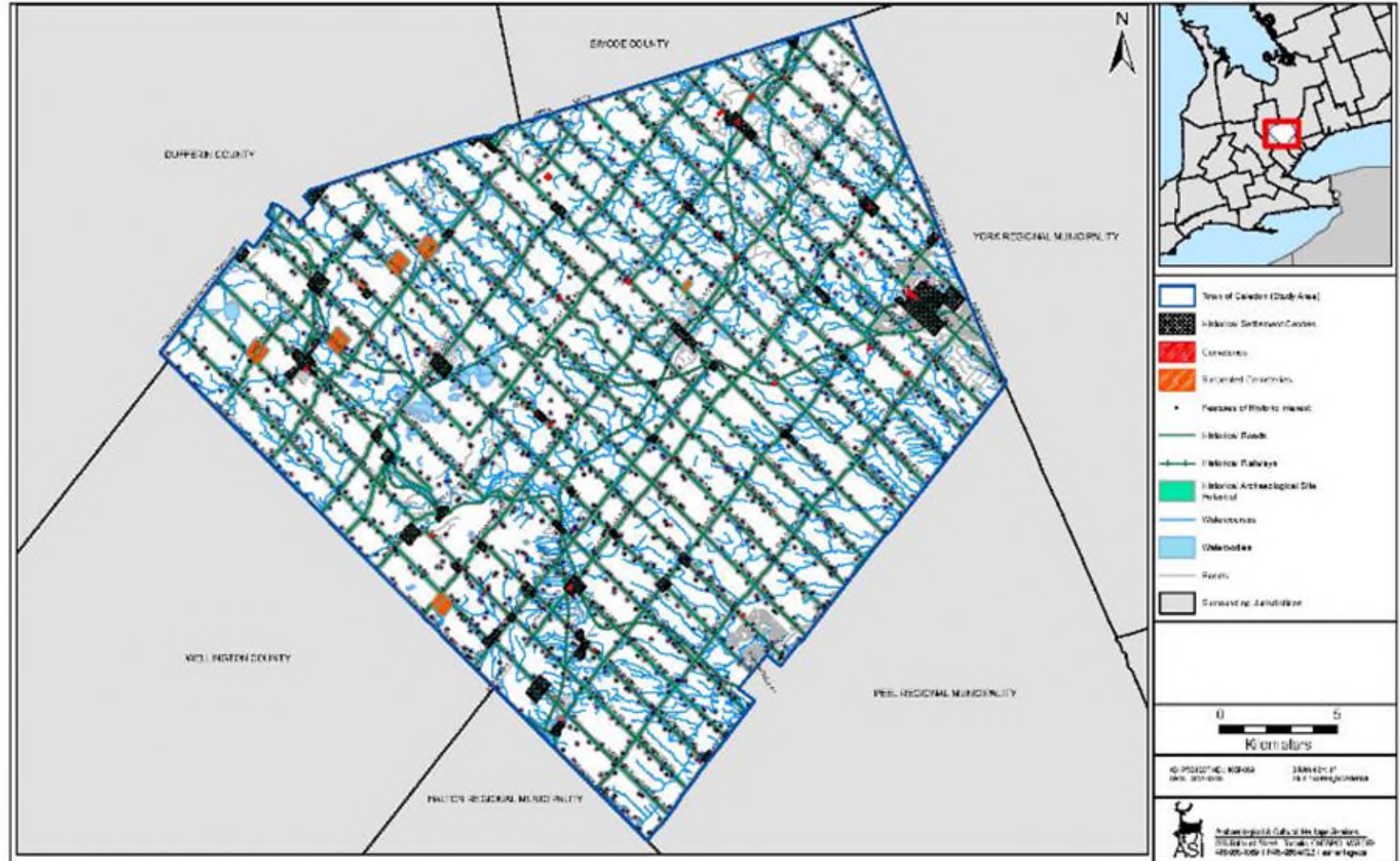


Figure 3 - Historical Archaeological Site Potential Layer

Caledon AMP

Archaeological Potential Model:

Composite Potential, Integrity, and Final Planning GIS Layers

TOWN OF CALEDON ARCHAEOLOGICAL MANAGEMENT PLAN



Prepared for:

The Corporation of the Town of Caledon
6311 Old Church Road, Caledon, ON L7C 1J6

**FUTURE
CALEDON**
OUR OFFICIAL PLAN


ASI
Providing Archaeological &
Cultural Heritage Services
528 Bathurst Street Toronto, ONTARIO M5S 2P9
T416-966-1069 F416-966-9723 asiheritage.ca

Caledon AMP

Composite Archaeological Potential GIS Layer

Combines Pre-
contact Indigenous
and Colonial Period
model layers

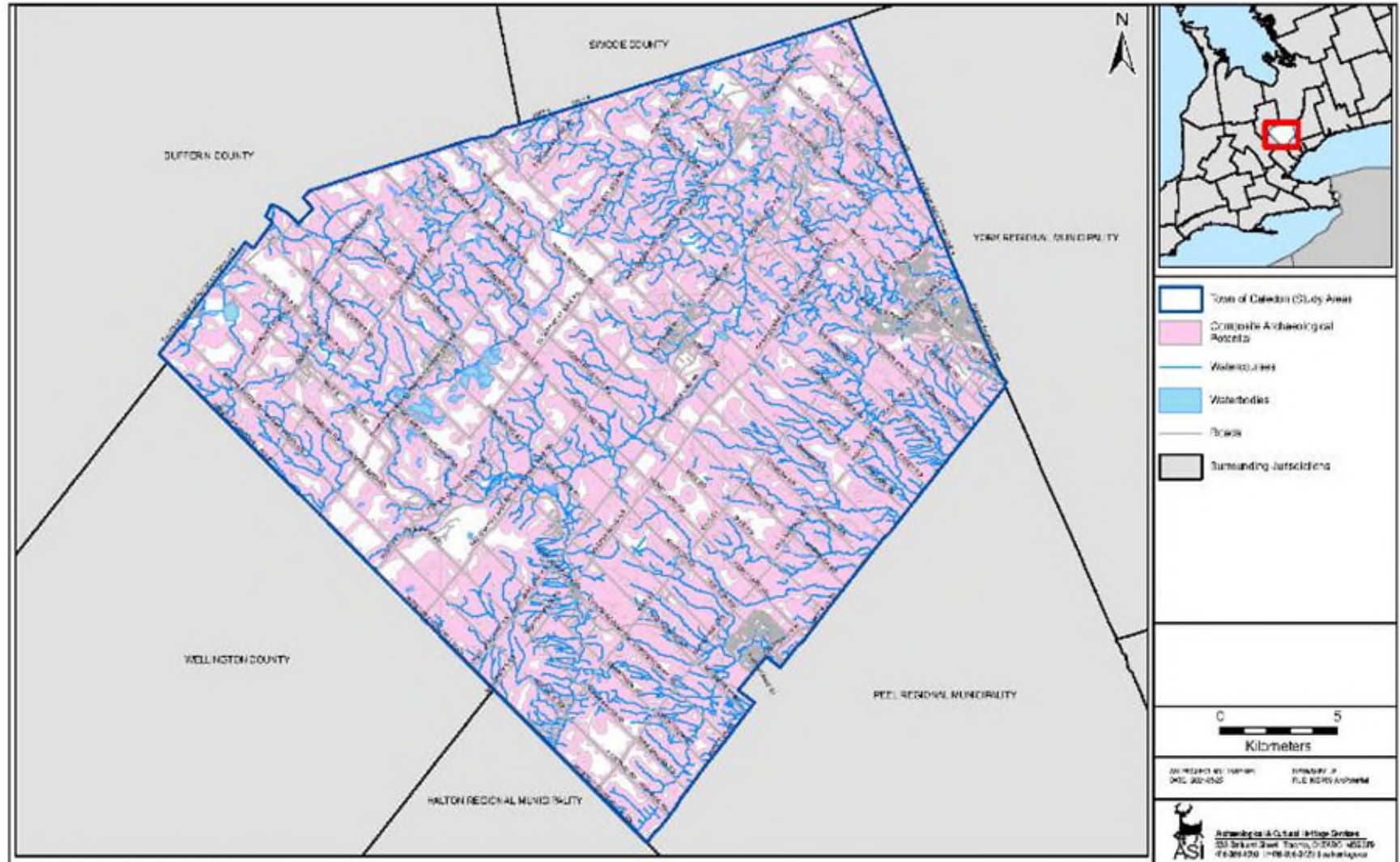


Figure 4-1 Composite Archaeological Potential Layer



Caledon AMP

Archaeological
Integrity Layer:

Previously Assessed
Lands

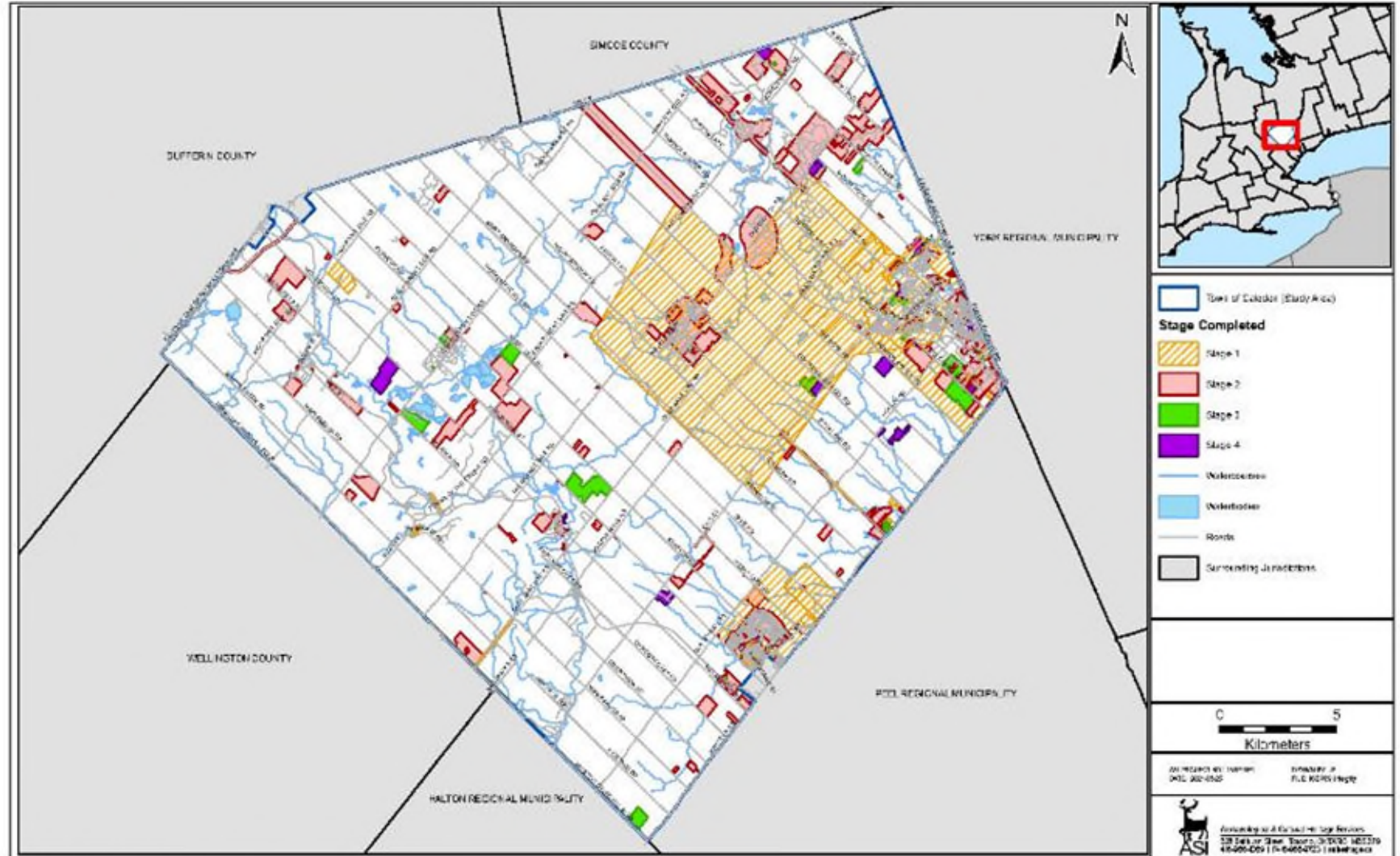


Figure 9: Previously Assessed Lands Layer



Caledon AMP

Archaeological Integrity Layer:

Previously Assessed Lands & Active Quarries

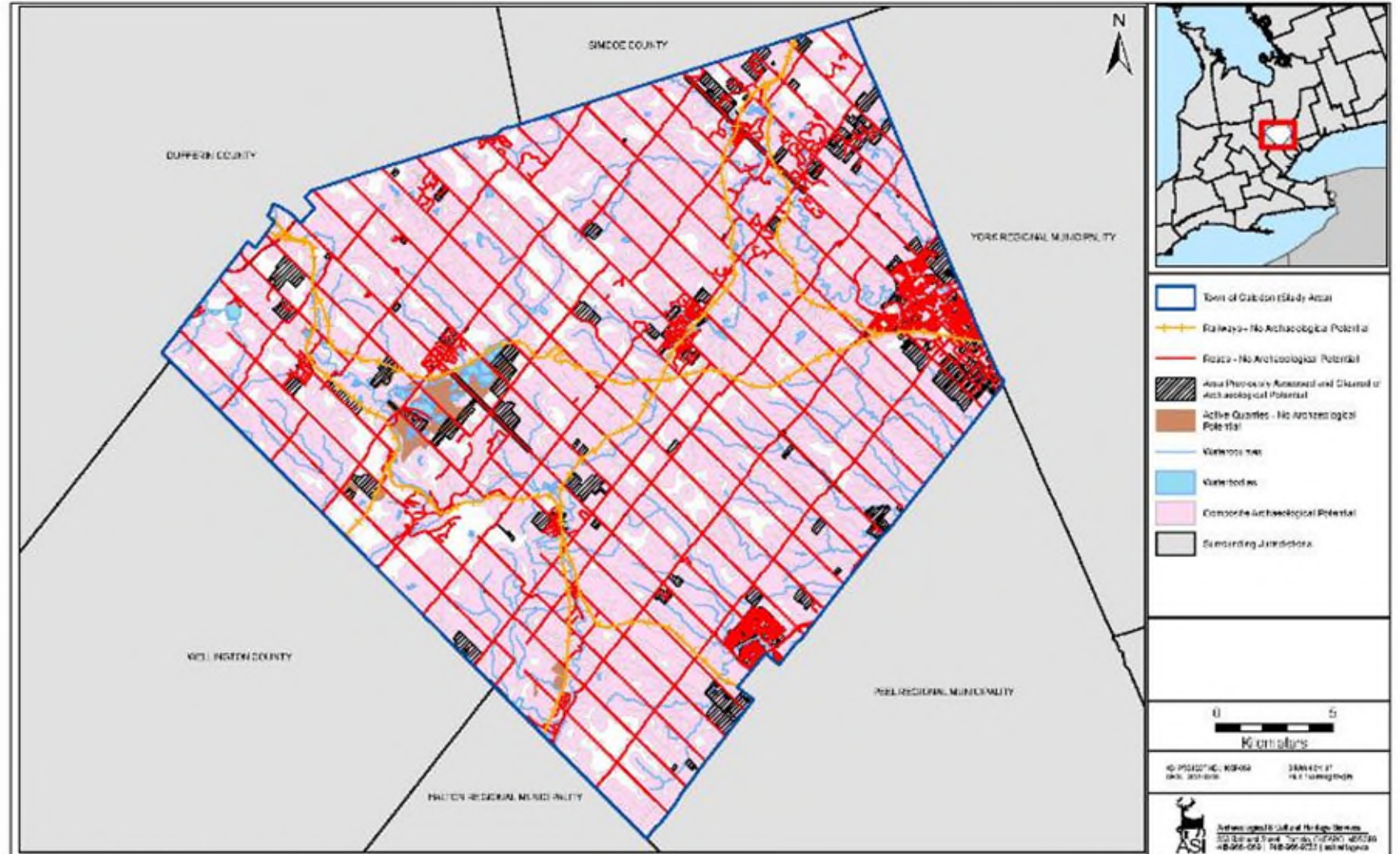


Figure 6: Composite Archaeological Potential Layer With Integrity



Caledon AMP

Final Planning GIS Layer:

Archaeological Assessment Required

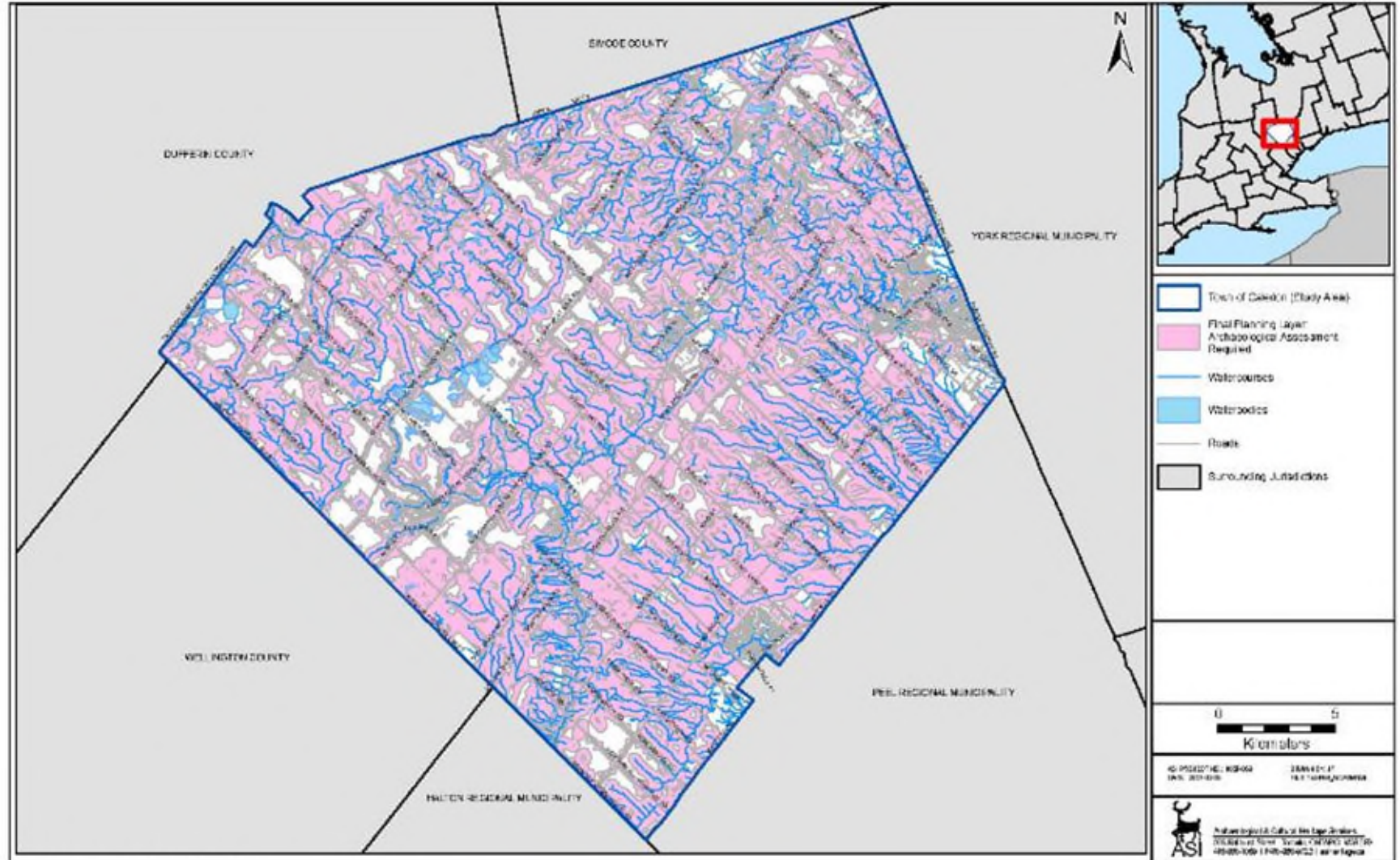


Figure 7. Archaeological Potential Planning Layer



Caledon AMP

Development Review Process

TOWN OF CALEDON ARCHAEOLOGICAL MANAGEMENT PLAN



Prepared for:

The Corporation of the Town of Caledon
6311 Old Church Road, Caledon, ON L7C 1J6

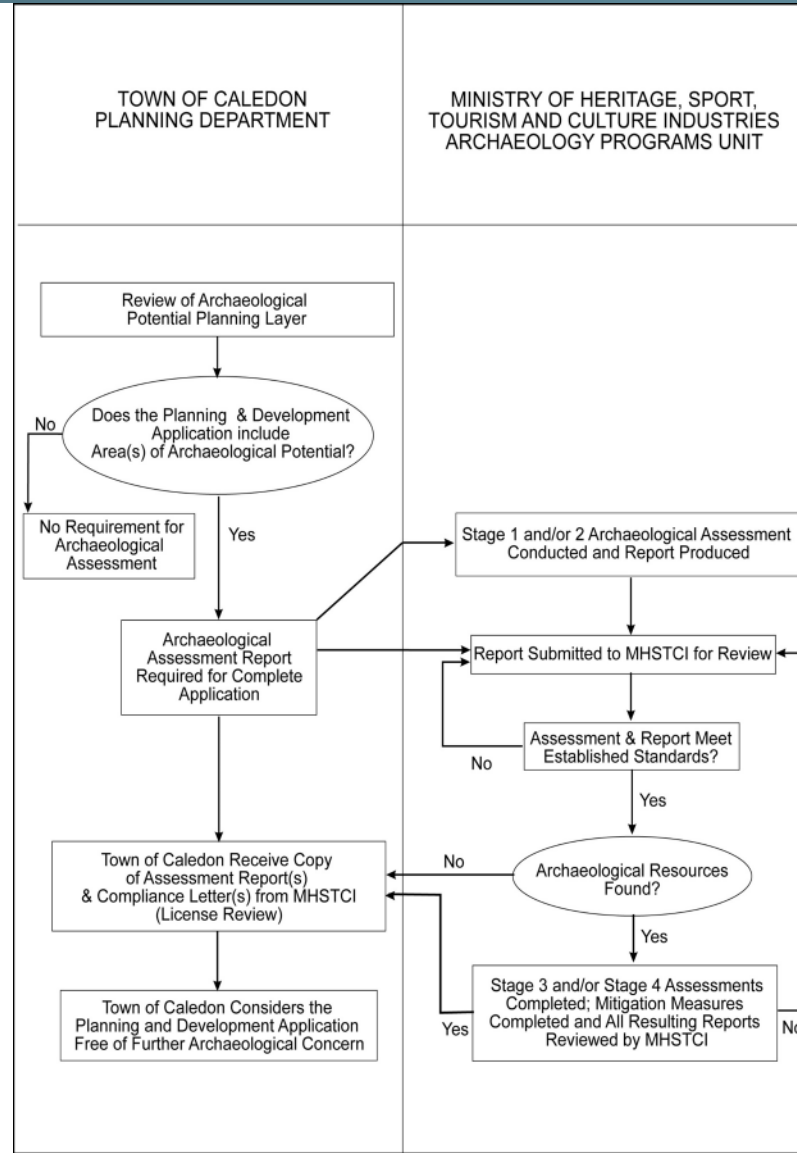
**FUTURE
CALEDON**
OUR OFFICIAL PLAN


ASI
Providing Archaeological &
Cultural Heritage Services
528 Bathurst Street Toronto, ONTARIO M5S 2P9
T 416-966-1069 F 416-966-9723 asiheritage.ca

Caledon AMP

Archaeological Review in the Planning and Development Application Process:

Process Flow Chart



Caledon AMP

Archaeological Review in the Planning and Development Application Process:

Implementation as per Planning Act and PPS

Archaeological assessment triggers:

- Official Plan Amendments
- Secondary Plans & Amendments
- Zoning By-law Amendments
- Site Plans
- Plans of Subdivision
- Consents or Minor Variance applications with soil disturbance
- Site Alteration Permits
- Town of Caledon Engineering Services Works

Stage 1 and 2 archaeological assessment typical



Caledon AMP

Archaeological Review in the Planning and Development Application Process:

Additional Recommendations

- Make archaeological potential map available publicly
- Update archaeological sites GIS layer and the assessed properties GIS layer annually
- Review AMP with Official Plan