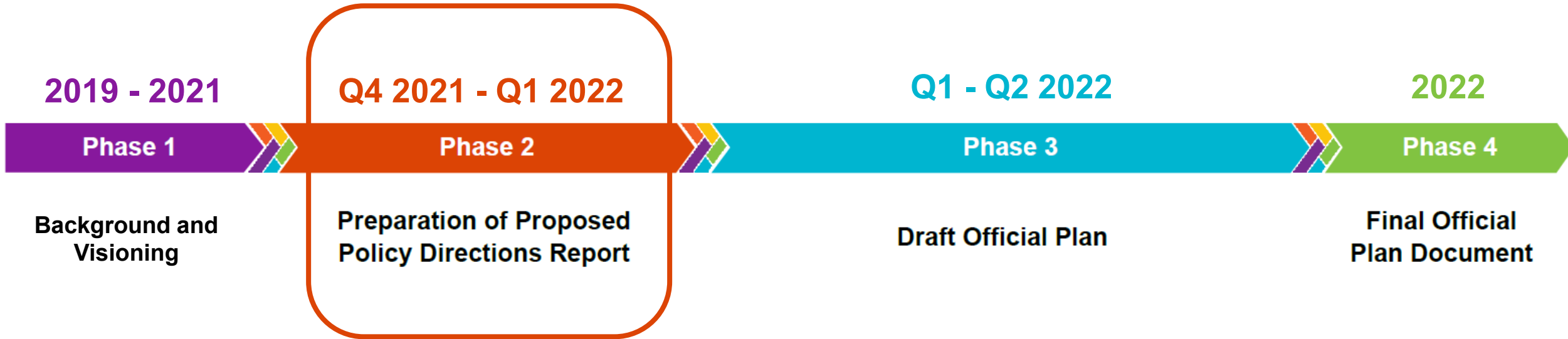




OFFICIAL PLAN WORKSHOP

January 25, 2022

Project Schedule



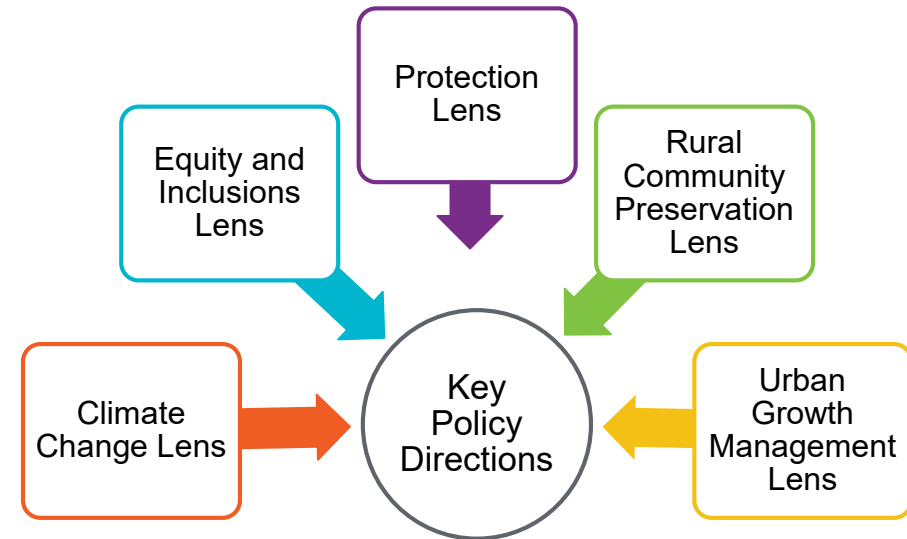
Policy Directions



- To provide direction that the new Official Plan will take based on all information and feedback received to date
- To provide an understanding of the strategies that the Official Plan will employ to address the substantial challenges of growth and change that Caledon will be addressing over the next 30 years

Over-arching Lenses

- Climate Change
- Equity and Inclusion
- Protection
- Rural Community Preservation
- Urban Growth Management



Key Policy Direction #1

Address Climate Change in Everything We Do

a) Mitigation

We will take every opportunity to minimize our impact on climate change.



b) Adaptation

We will understand and prepare our Town for the impacts that will come with climate change.



Key Policy Direction #2

Protect our Agricultural Lands

We will protect our agricultural lands so that they are sustainable and productive over the long-term.



Key Policy Direction #3

Preserve our Environmental Areas

We will preserve and restore our natural heritage and water resource systems so that they are healthy and sustainable over the long-term.



Key Policy Direction #4

Conserve our Cultural Heritage

We will conserve and celebrate our heritage buildings, sites, districts, landscapes and our archaeological resources so that they share the story of our history with future generations.



Key Policy Direction #5

Manage our Aggregate Resources

We will identify and conserve our mineral aggregate resources, manage their extraction, minimize their impacts and progressively rehabilitate operations.



Key Policy Direction #6

Protect and Nurture our Rural Communities

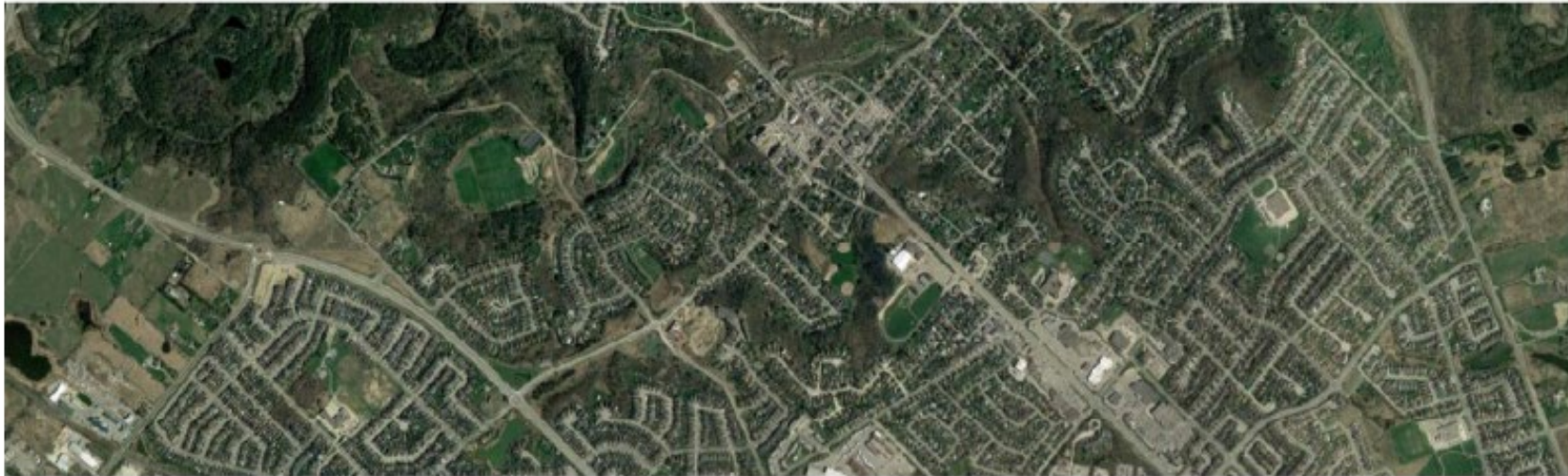
We will recognize our rural roots, protect and nurture the character, economy and quality of our rural communities



Key Policy Direction #7

Manage and Support Growth for our Long-term Benefit

We will manage and support growth so we can maximize our prosperity over the long-term.



Key Policy Direction #8

Create Healthy and Complete Neighbourhoods

We will plan for healthy and complete neighbourhoods that offer a mix of housing opportunities, a wide range of community amenities and easy access to the goods and services we require daily without using a car.



Key Policy Direction #9

Design Great Urban Places

We will plan and design the urban area of Caledon so that it becomes a mosaic of vibrant, well designed and fulfilling urban places.



Key Policy Direction #10

Create High Quality Mobility Options

We will create an effective transportation system that supports all forms of mobility, with an emphasis on creating great walking, cycling and transit infrastructure so Caledon residents are not car dependent.



Key Policy Direction #11

Pursue Housing Affordability

We will take actions to improve the affordability of housing across Caledon and foster the development of various forms of affordable housing to serve those in our community who need it.



Key Policy Direction #12

Support Strategic and Innovative Economic Opportunities

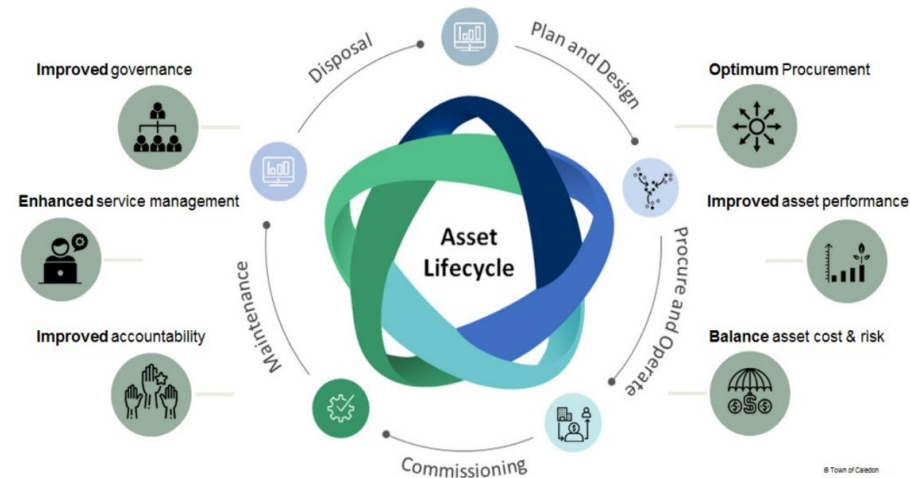
We will act strategically to develop our employment lands for businesses that maximize our long-term job growth and economic prosperity; we will support the retention and expansion of businesses and revitalization of our main streets.



Key Policy Direction #13

Strategically Manage our Civic Infrastructure

Together with the Region, we will manage our municipal infrastructure, so it creates growth opportunities while being effective, affordable and sustainable over the long-term.



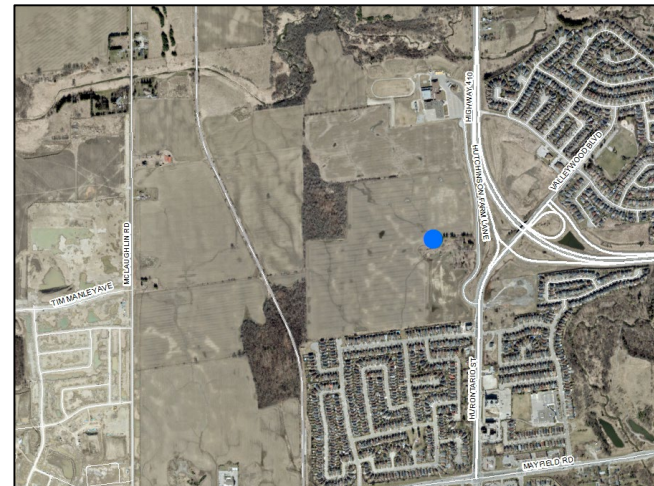
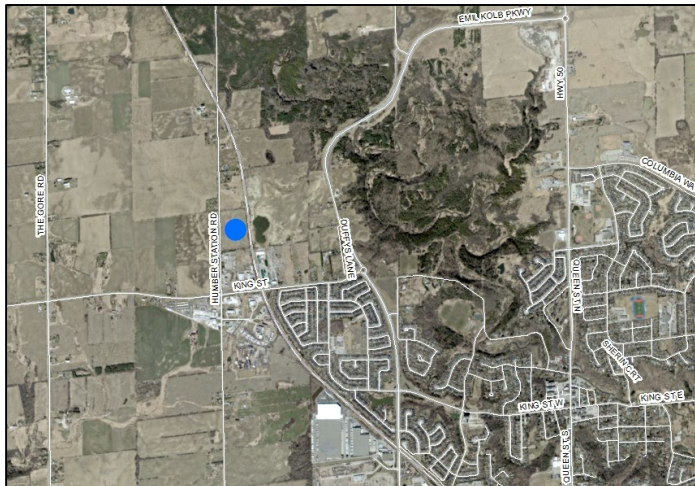
Town Structure

- Provides a framework to guide and influence where growth is to be directed in a municipality
- Serves as basis for other policies and sections in the Official Plan



Town Structure

- Urban Centres - principal locations for growth. They will accommodate important regional amenities and serve as hubs for neighbouring municipalities
 - Caledon GO Major Transit Station Area
 - Mayfield West Major Transit Station Area



Town Structure

- Neighbourhood Centres - will serve as mixed use areas within neighbourhoods to accommodate higher density uses that serve the neighbourhood. Locations have been identified conceptually in new growth areas.



Town Structure

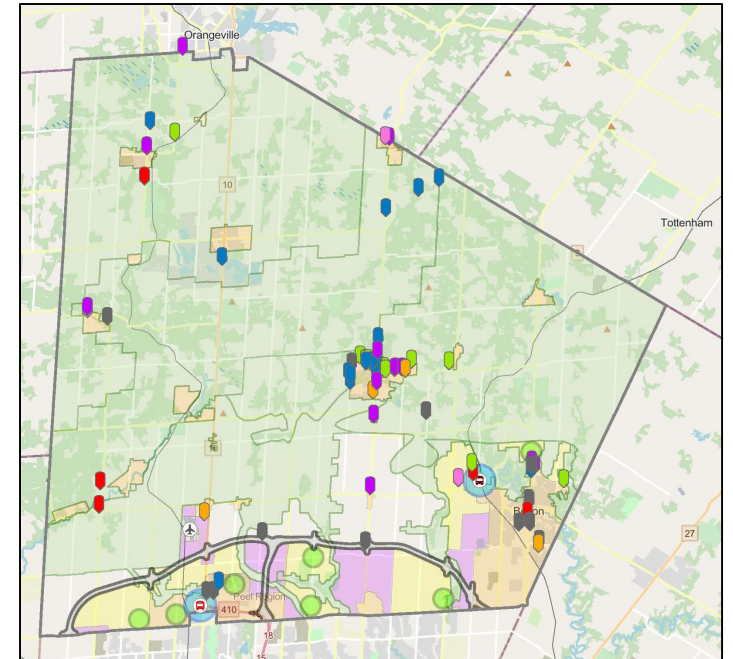
- Corridors - places for movement, living, and commerce that are intrinsically linked to the mobility systems that connect the Town. Across Caledon, the various Corridors (Urban, Employment and Interchange) will vary in terms of intensity, form, and scale.



Consultation on Town Structure



- A Public Open House was held December 13, 2021
- Creating complete communities survey December 17 to January 7
- Respondents were asked to drop pins on the map and make suggestions where businesses, services and community amenities are needed.
- Input will be considered as part of the town structure and other components in the draft Official Plan



Survey submissions

Next Steps



Upcoming Phase 2 and 3 Events

- Policy Directions on Have Your Say Caledon – Late January
- Video Resource Series – January/February
- Focus Groups – February

Looking Ahead

- Continue work on Draft Official Plan – **February 2022**
- Draft Official Plan to Council for direction – **March 2022**
- Public and stakeholder consultation – **March 2022 (ongoing)**
- Statutory Public Open Houses / Public Meeting – **March 2022**
- Peel 2051 to Peel Council for adoption – **Early 2022**