

Staff Report 2019-35

Meeting Date: Tuesday, March 19, 2019

Subject: Proposed Traffic Safety Improvements

Submitted By: Steve Mathew, Traffic Technologist, Finance & Infrastructure Services

RECOMMENDATION

That Traffic By-Law 2015-058, be amended to include a posted speed limit of 40 kilometres per hour for the following locations:

- A. Shaws Creek Road between Bush Street (RR11) to a point 422m south of Bush Street (RR11);
- B. Abbotside Way between Kennedy Road to a point 50m east of Learmont Ave;
- C. Columbia Way between Highway 50 to a point 415m west of Westchester Road; and
- D. Dougall Ave between Learmont Ave to a point 266m west of Learmont Ave.

That Traffic By-Law 2015-058, be amended to include a Community Safety Zone for the following locations:

- A. Abbotside Way between Kennedy Road to a point 50m east of Learmont Ave; and
- B. Dougall Ave between Learmont Ave to a point 266m west of Learmont Ave.

That staff be directed to install the regulatory and warning signs as outlined in Staff Report 2019-35 in accordance with the Ontario Traffic Manual and the Highway Traffic Act; and

That a copy of Staff Report 2019-35 be forwarded to the Ontario Provincial Police for their information.

DISCUSSION

The purpose of this report is to establish a School Zone and Community Safety Zone for four existing schools in accordance to the Ontario Traffic Manual (OTM) and Highway Traffic Act (HTA). The recommendations in this report are consistent with what is in place for other schools in Caledon.

School Zone

In accordance to the Highway Traffic Act and Ontario Traffic Manual all roadways with direct junior school frontage shall have a 40km/h speed limit sign within a distance of 150m along the road in either direction beyond the limits of the school property. This zone is considered to be a school zone according to HTA.

Community Safety Zone

A Community Safety Zone (CSZ) is a designation under the Highway Traffic Act (HTA) where traffic laws remain the same but fines such as speeding and distracted driving are doubled. The purpose of these zones is to advise motorists they are within a zone, where schools exist, in which public safety is of special concern and they are to reduce their speeds to increase safety for all travelers.

Below is a table summarizing the four schools, the roadways within the School Zones that will have speed limit changes, and Community Safety Zone designations:

No.	School	Roadways within the School Zones	Existing Speed Limit	Proposed Speed Limit	Existing Community Safety Zone
1	Belfountain Public School	Shaws Creek Road between Bush Street (RR11) to a point 422m south of Bush Street (RR11)	60km/h	40km/h	Yes
2	Saint- Jean-Bosco Catholic Elementary School	Abbotside Way between Kennedy Road to a point 50m east of Learmont Ave	50km/h	40km/h	No- a new Community Safety Zone is recommended
3	St.Michael Catholic Secondary School	Columbia Way between Highway 50 to a point 415m west of Westchester Road	60km/h	40km/h	Yes
4	Southfields Public School	Dougall Ave between Learmont Ave to a point 266m west of Learmont Ave	50km/h	40km/h	No- a new Community Safety Zone is recommended

The placement and spacing of the advisory and regulatory signs are to be in accordance with the Highway Traffic Act and Book 5 & 6 of the Ontario Traffic Manual (See Schedule A).

Staff Report 2019-35

Later this year staff will be undertaking an Environmental Assessment for Columbia Way. One of the components is to review physical traffic calming measures and how a road could be redesigned or reconstructed to support the 40km/h speed limit within the school zone.

NEXT STEPS

Transportation Staff will make the necessary arrangements to acquire locates (stake-outs) from all the applicable utilities and coordinate the installation signs, including 40 km/hour (all-day) signs, at the four school zones noted in this report.

Transportation Staff will inform the Ontario Provincial Police of the posted speed limit changes and the Community Safety Zones.

FINANCIAL IMPLICATIONS

The cost to purchase and install the required regulatory signs, associated posts and hardware is estimated at \$800 and will be paid from the Infrastructure Services 2019 operating budget (account # 01-09-500-49115-365-62660 Traffic Operations Maintenance).

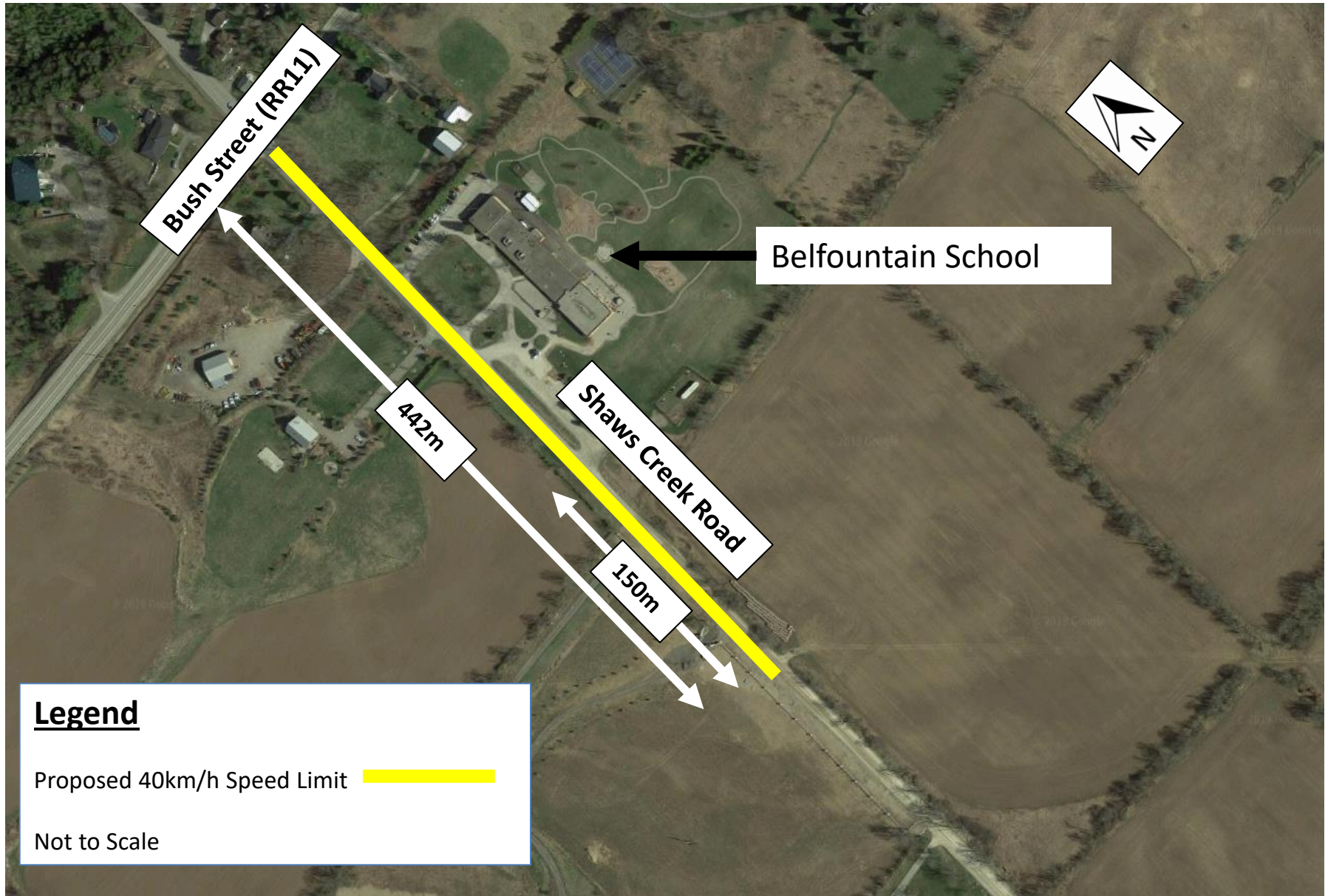
COUNCIL WORK PLAN

The matter contained in this report is not relative to the Council Work Plan.

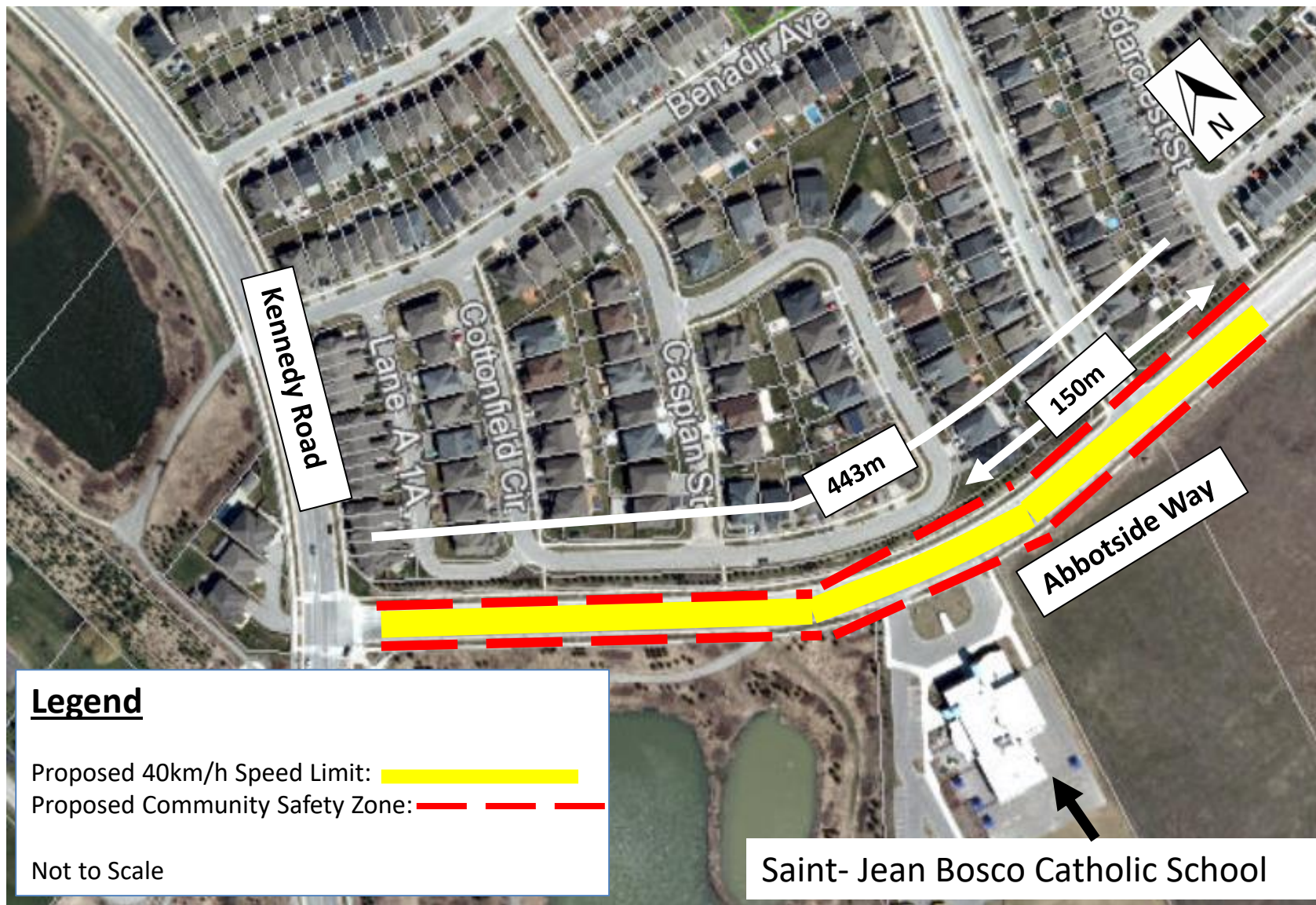
ATTACHMENTS

- Schedule A- Belfountain School Zone Location Map
- Schedule B- Saint-Jean Bosco Catholic School Zone Location Map
- Schedule C- St.Michael Catholic Secondary School Zone Location Map
- Schedule D- Southfields Public School Zone Location Map

Schedule A – Belfountain School Zone Location Map



Schedule B – Saint- Jean Bosco Catholic School Zone Location Map



Schedule C - St.Michael Catholic Secondary School Location Map



Schedule D – Southfields Public School Location Map

