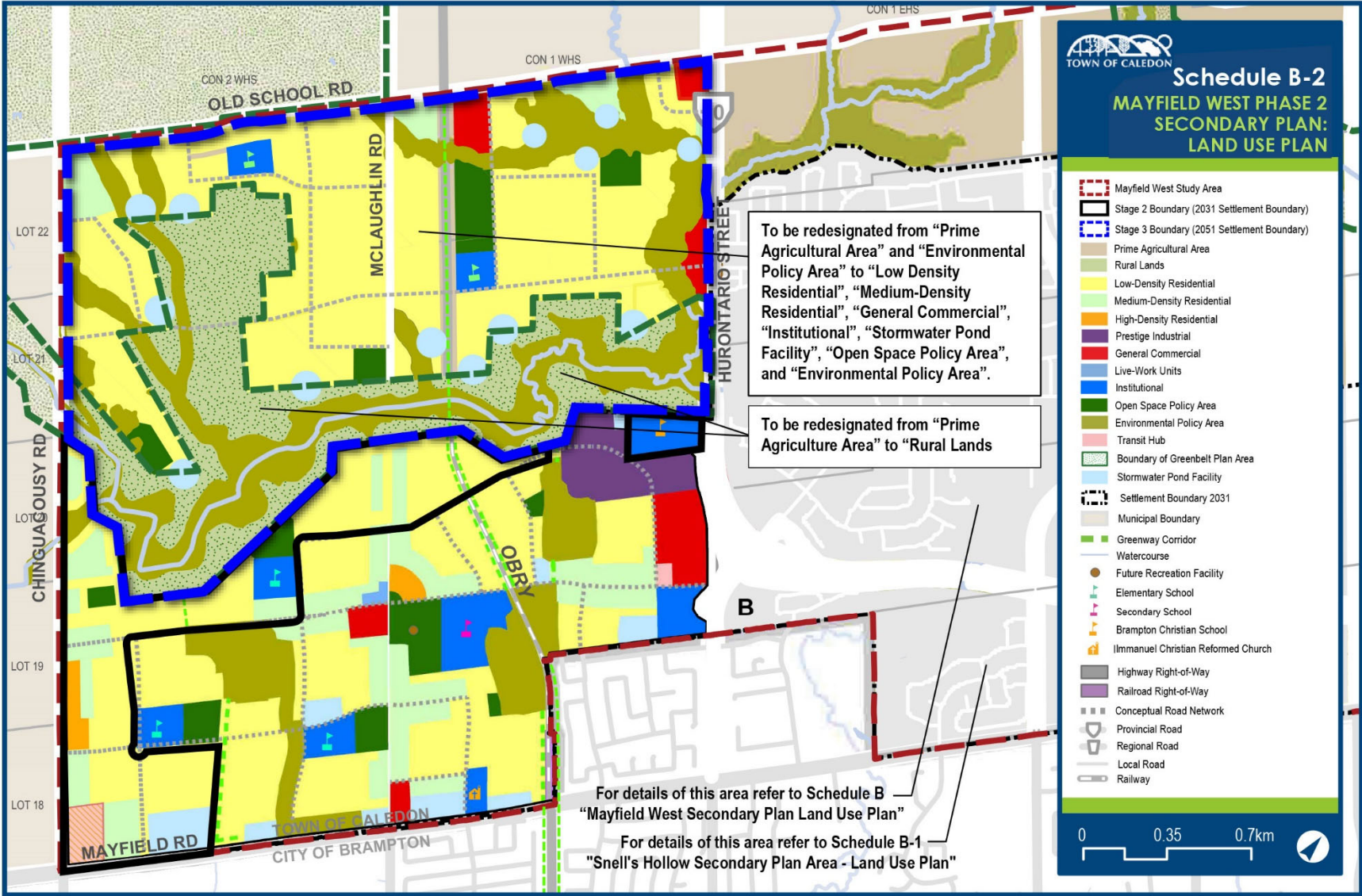


Amended Schedule B-2



To be redesignated from "Prime Agricultural Area" and "Environmental Policy Area" to "Low Density Residential", "Medium-Density Residential", "General Commercial", "Institutional", "Stormwater Pond Facility", "Open Space Policy Area", and "Environmental Policy Area".

To be redesignated from "Prime Agriculture Area" to "Rural Lands"

For details of this area refer to Schedule B
 "Mayfield West Secondary Plan Land Use Plan"

For details of this area refer to Schedule B-1
 "Snell's Hollow Secondary Plan Area - Land Use Plan"