

KEY PLAN

Subject Property

Scale: 0 100 200 300 400 500
899m - 1:10k

AREA TABLE

	Subject Boundary
	Condominium Boundary
	Road Centre Line
	2.5m Servicing Easement
	MTO Setback

AREA TABLE

Residential Condominium	Condominiums A - G	1.33 ha
Stormwater Management		0.04 ha
TOTAL		1.37 ha

UNIT COUNT

Residential Condominium	Lots 1 - 27	27u
Existing Two Story Dwelling		1u
TOTAL		28u

NOTES:
 - Preexisting Condominium Units are 2,146 (20) P.O.T. Townhouses.
 - All measurements are in meters.
 - All dimensions refer to Canadian Customs.
 - Base Information obtained from Caledon Township Development Site Plan - Lots 6 & Associated Conditions in Planning and Development - October 24, 2022.

DRAFT PLAN OF CONDOMINIUM
 PART of North Half Lot 15 Concession 1,
 West Hurontario Street
 (Former Township of Caledon, County of Peel)
 Town of Caledon, Regional Municipality of Peel

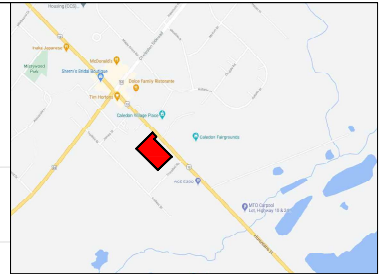
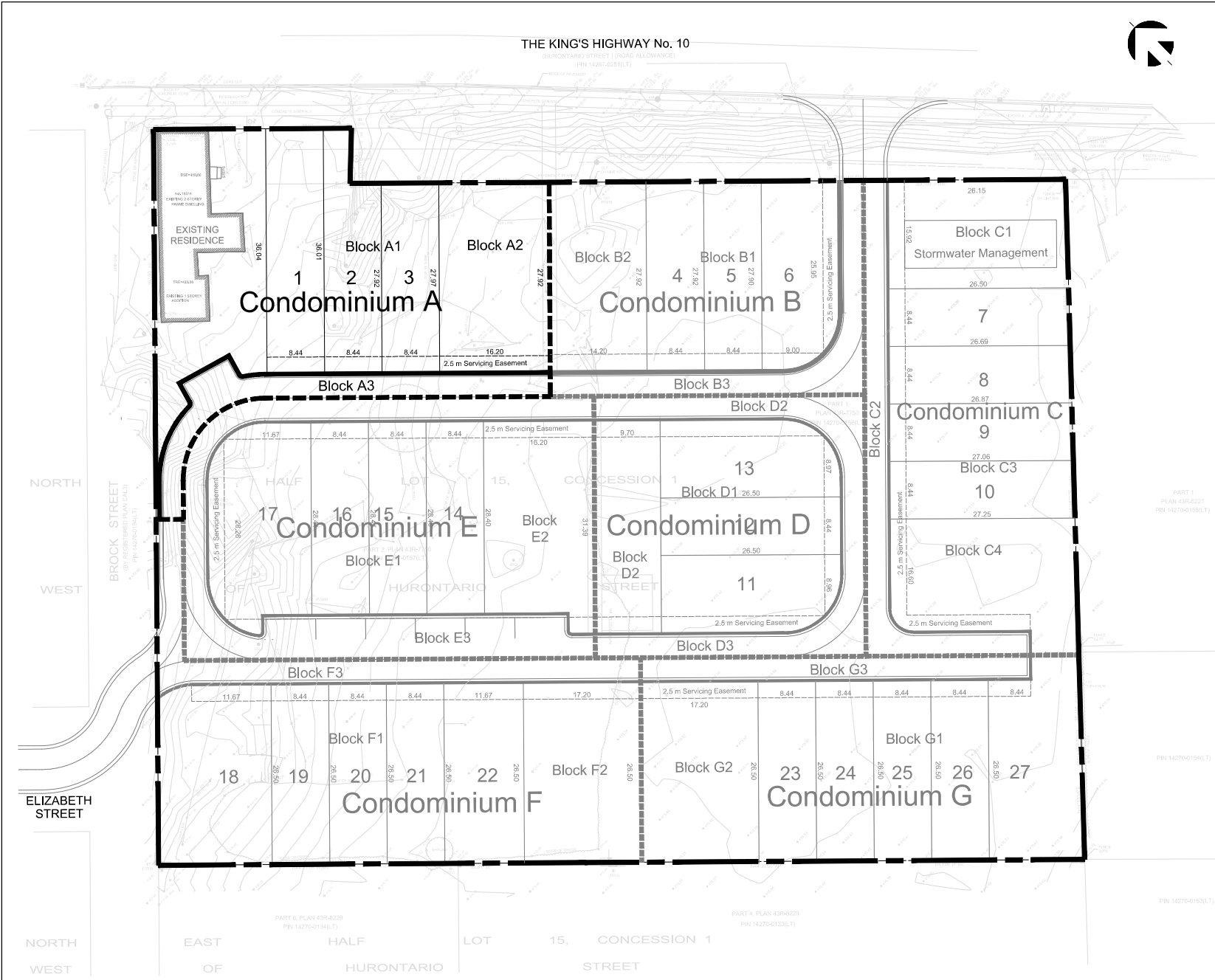
DESIGN PLAN SERVICES INC.
 Town Planning Consultants

900 The East Mall, Suite 300
 Toronto, ON M9B 6K2
 Telephone: 416.626.5445
 www.designplan.ca

DP
S

1:250 Scale	March 12, 2023 Date	1969 - 3A Drawing Number	Rev.	JD Drawn
----------------	------------------------	-----------------------------	------	-------------

Attachment "E1"



KEY PLAN

■ Subject Property

0 100 200 300 400 500
approx. m

AREA TABLE

	Subject Boundary
	Condominium Boundary
	Condominium Block
	Road Centre Line
	2.5m Servicing Easement

AREA TABLE

Block A1	0,14 ha
Block A2	0,05 ha
Block A3	0,03 ha
TOTAL	0,22 ha

UNIT COUNT

Condominiums	3 Units
Existing Residence	1 Unit
TOTAL	4 Units

NOTES:
 Historical Condominium Units are 5.14m (SD) PDI's Townhouses.
 All measurements refer to Canadian Datum.
 Date information obtained from Caledon Townhouse Development Site Plan - Lucas & Associates Consultants in Planning and Development - October 24, 2022.

DRAFT PLAN OF CONDOMINIUM

PART of North Half Lot 15 Concession 1,
 West of Hurontario Street
 (Former Township of Caledon, County of Peel)
 Town of Caledon, Regional Municipality of Peel

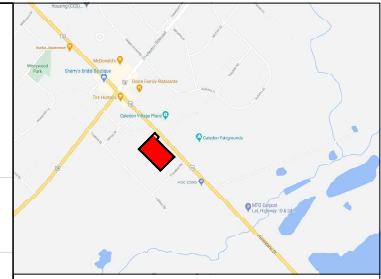
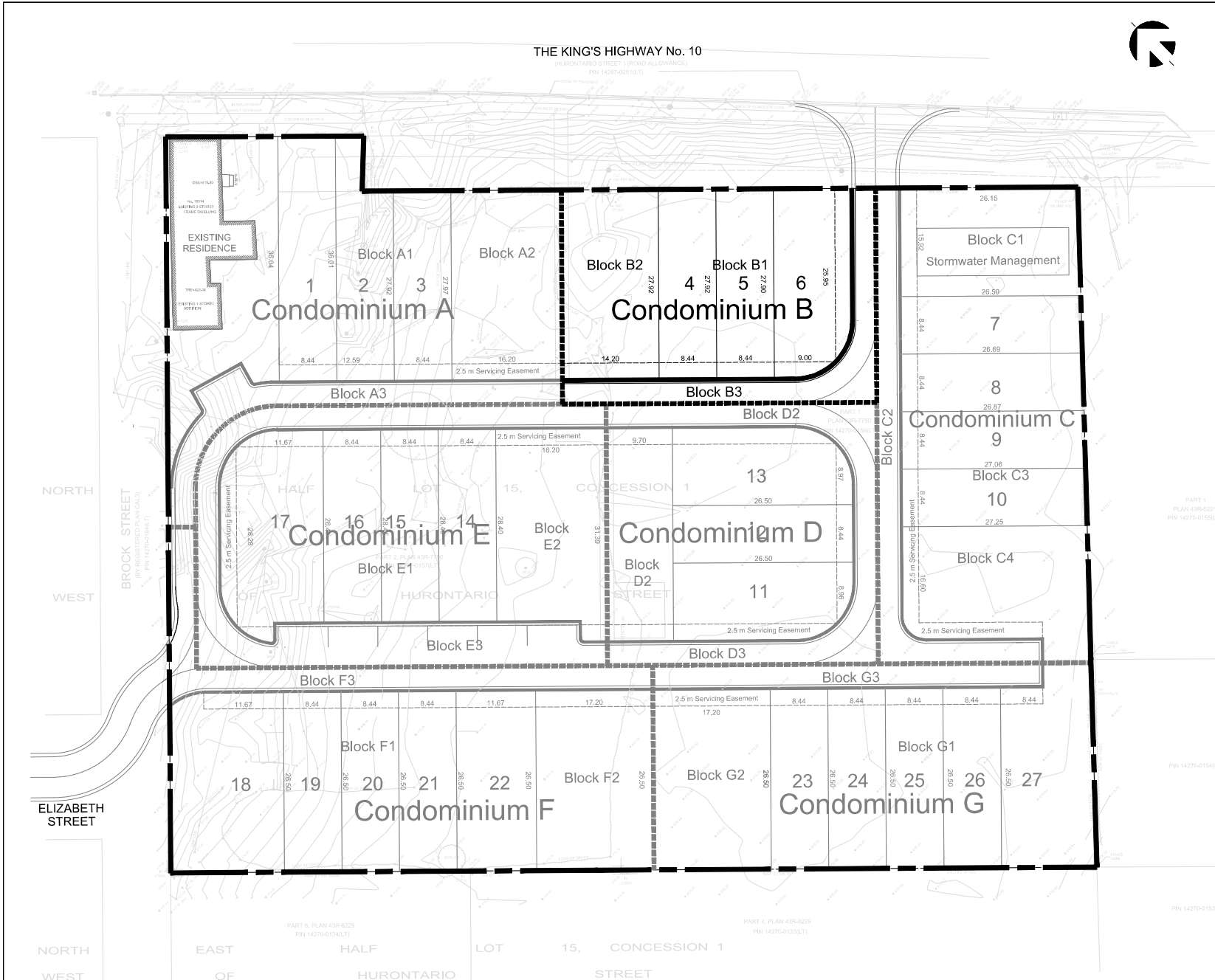
DESIGN PLAN SERVICES INC.
 Town Planning Consultants

D
P
S

900 The East Mall, Suite 300
 Toronto, ON M9B 6K2
 Telephone: 416.626.5445
 www.designplan.ca

1:250 Scale	March 15, 2023 Date	1969 - 3SC1 Drawing Number	JD Rev.	JD Drawn
----------------	------------------------	-------------------------------	------------	-------------

Attachment "E2"



KEY PLAN

Subject Property

0 100 200 300 400 500
approx. m

AREA TABLE

- Subject Boundary
- Condominium Blanketary
- Condominium Blanketary
- Road Centre Line
- 2.5m Servicing Easement

AREA TABLE

Block B1	0.08 ha
Block B2	0.04 ha
Block B3	0.02 ha
TOTAL	0.14 ha

UNIT COUNT

Condominiums	3 Units
--------------	---------

NOTES:
Residential Condominium Units are 1,1m (37') P.O.T., Townhouses.
All measurements are in metres.
All elevations refer to Geoid of Datum.
Basis Information referenced from: Caledon Township Development Site Plan - Local & Associates Consultants in Planning and Development - October 24, 2022.

DRAFT PLAN OF CONDOMINIUM

PART of North Half Lot 15 Concession 1,
West of Hurontario Street
(Former Township of Caledon, County of Peel)
Town of Caledon, Regional Municipality of Peel

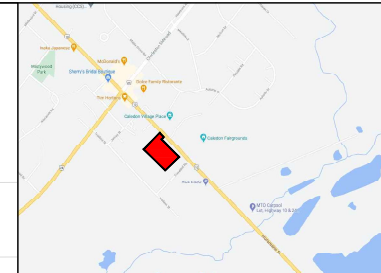
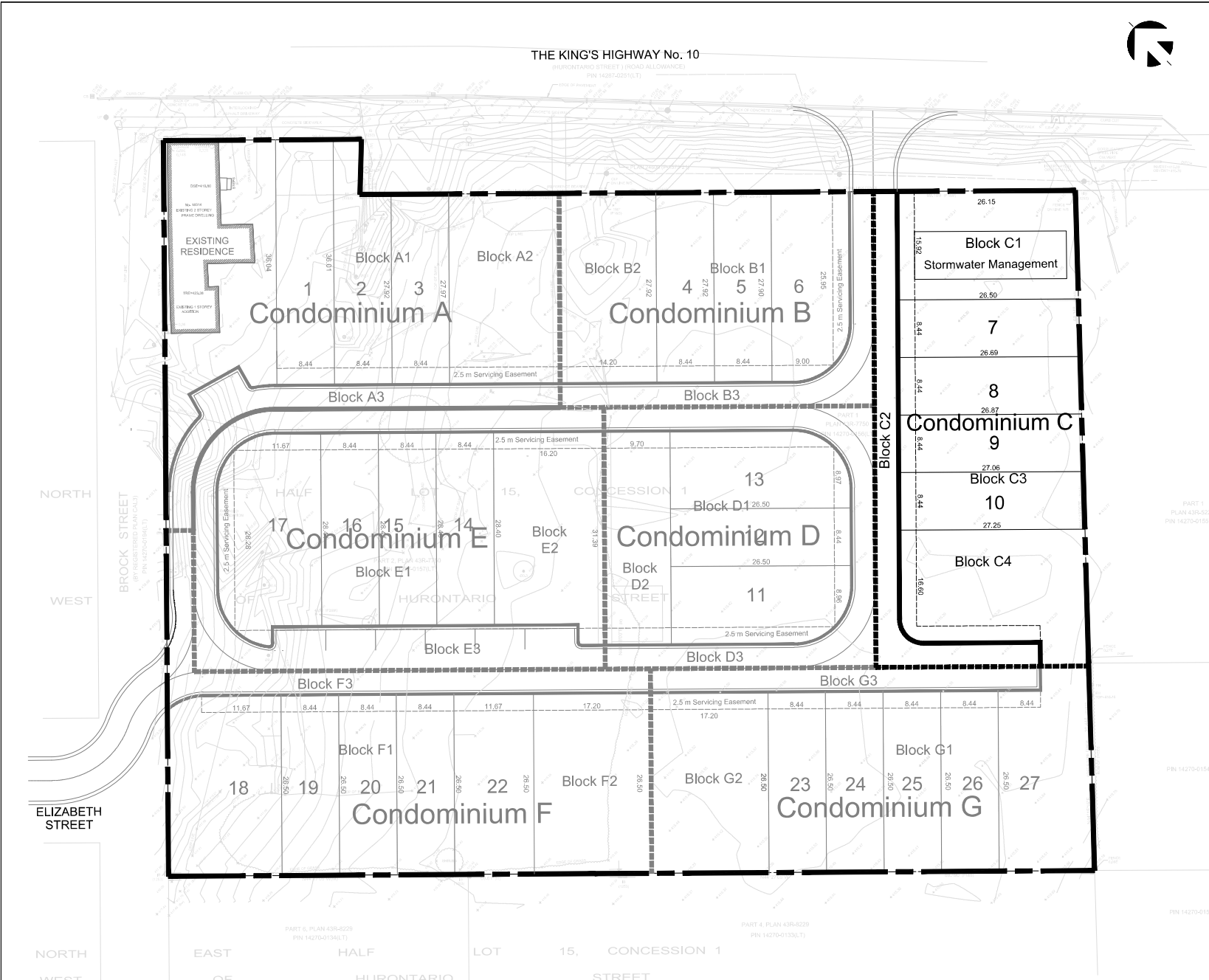
DESIGN PLAN SERVICES INC.
Town Planning Consultants

900 The East Mall, Suite 300
Toronto, ON M9B 6K2
Telephone: 416.626.5445
www.designplan.ca



1:250 Scale	March 15, 2023 Date	1969 - 3SC2 Drawing Number	JD Rev.	JD Drawn
----------------	------------------------	-------------------------------	------------	-------------

Attachment "E3"



KEY PLAN



AREA TABLE

- Subject Boundary
- - - Condominium Boundary
- - - Condominium Block
- - - Road Centre Line
- - - 2.5m Servicing Easement

AREA TABLE

Block C1	0.04 ha
Block C2	0.03 ha
Block C3	0.09 ha
Block C4	0.05 ha
TOTAL	0.21 ha

UNIT COUNT

Condominiums	4 Units
--------------	---------

NOTES:
 Residential Condominium Units are 1+1km (2R) PDR, Townhouses.
 All measurements are in metres.
 All elevations refer to Geoidal Datum.
 Base Information obtained from Caledon Township Development Site Plan - Lucas & Associates Consultants in Planning and Development - October 24, 2022.

DRAFT PLAN OF CONDOMINIUM

PART of North Half Lot 15 Concession 1,
 West of Hurontario Street
 (Former Township of Caledon, County of Peel)
 Town of Caledon, Regional Municipality of Peel

DESIGN PLAN SERVICES INC.
 Town Planning Consultants

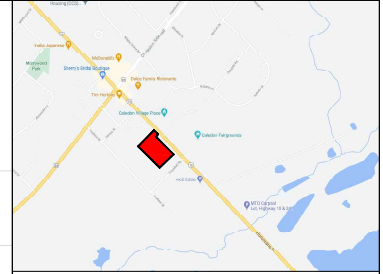


900 The East Mall, Suite 300
 Toronto, ON M9B 6K2
 Telephone: 416-626-5445
 www.designplan.ca

1:250 Scale	March 15, 2023 Date	1969 - 3SC3 Drawing Number	JD Rev.	Drawn
----------------	------------------------	-------------------------------	------------	-------

Attachment "E4"

THE KING'S HIGHWAY No. 10



KEY PLAN

Subject Property



1 100 200 300 400 500
approx. scale

AREA TABLE

	Subject Boundary
	Condominium Boundary
	Condominium Block
	Road Centre Line
	2.5m Servicing Easement

AREA TABLE

Block D1	0.08 ha
Block D2	0.03 ha
Block D3	0.04 ha
TOTAL	0.15 ha

UNIT COUNT

Condominiums	3 Units
--------------	---------

NOTES:
Proposed Condominium Units are 9.14m (30') P.O.T. Townhouses.
All measurements are in metres.
All elevations refer to Geoid Datum.
These information is prepared from Caledon Townhouse Development Site Plan - Caledon Associates Consultants in Planning and Development - October 24, 2022.

DRAFT PLAN OF CONDOMINIUM

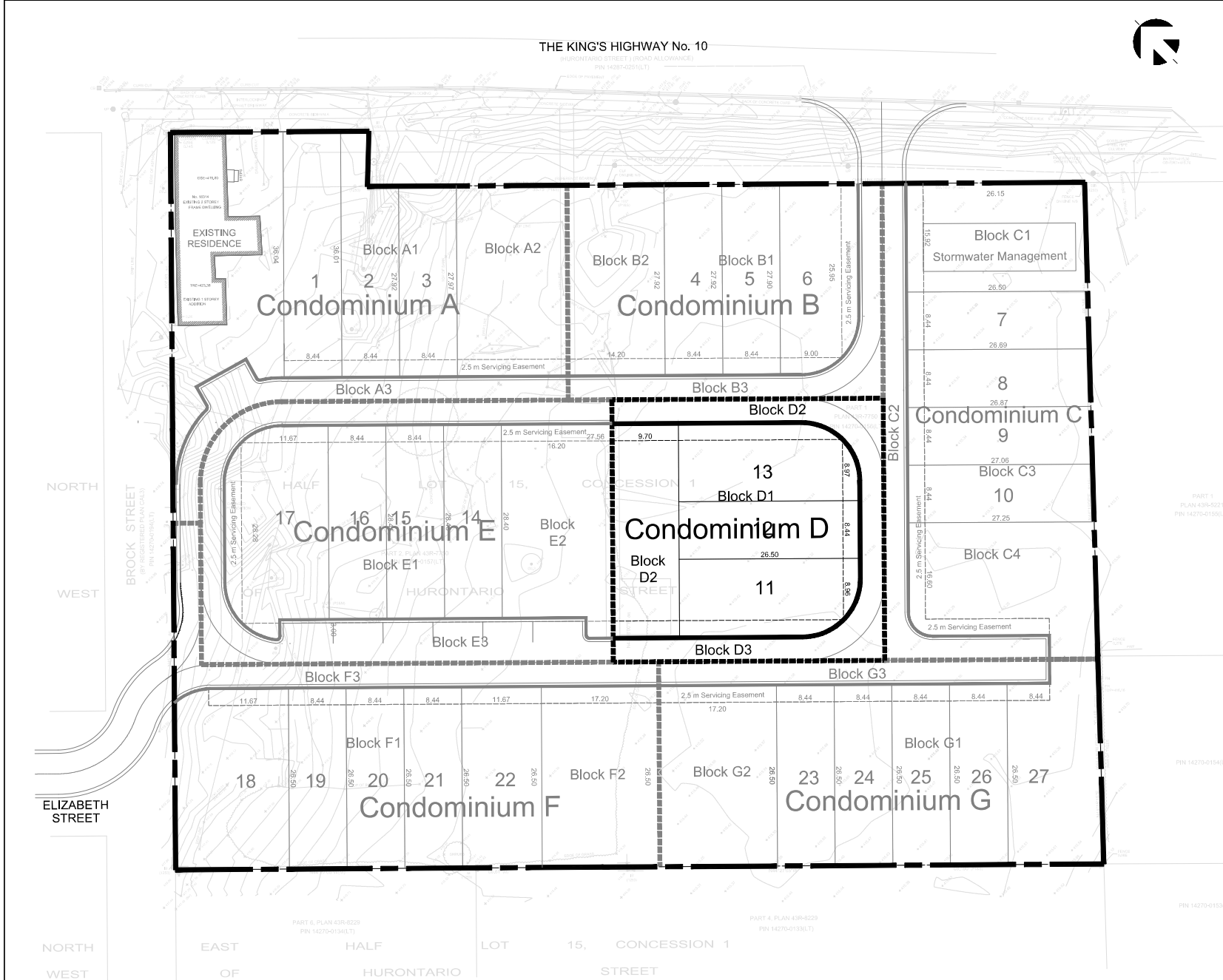
PART of North Half Lot 15 Concession 1,
West of Hurontario Street
(Former Township of Caledon, County of Peel)
Town of Caledon, Regional Municipality of Peel

DESIGN PLAN SERVICES INC.
Town Planning Consultants

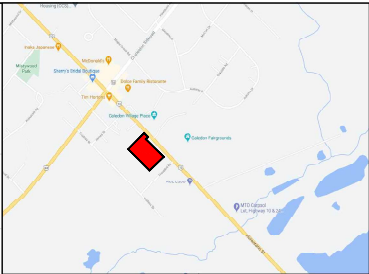
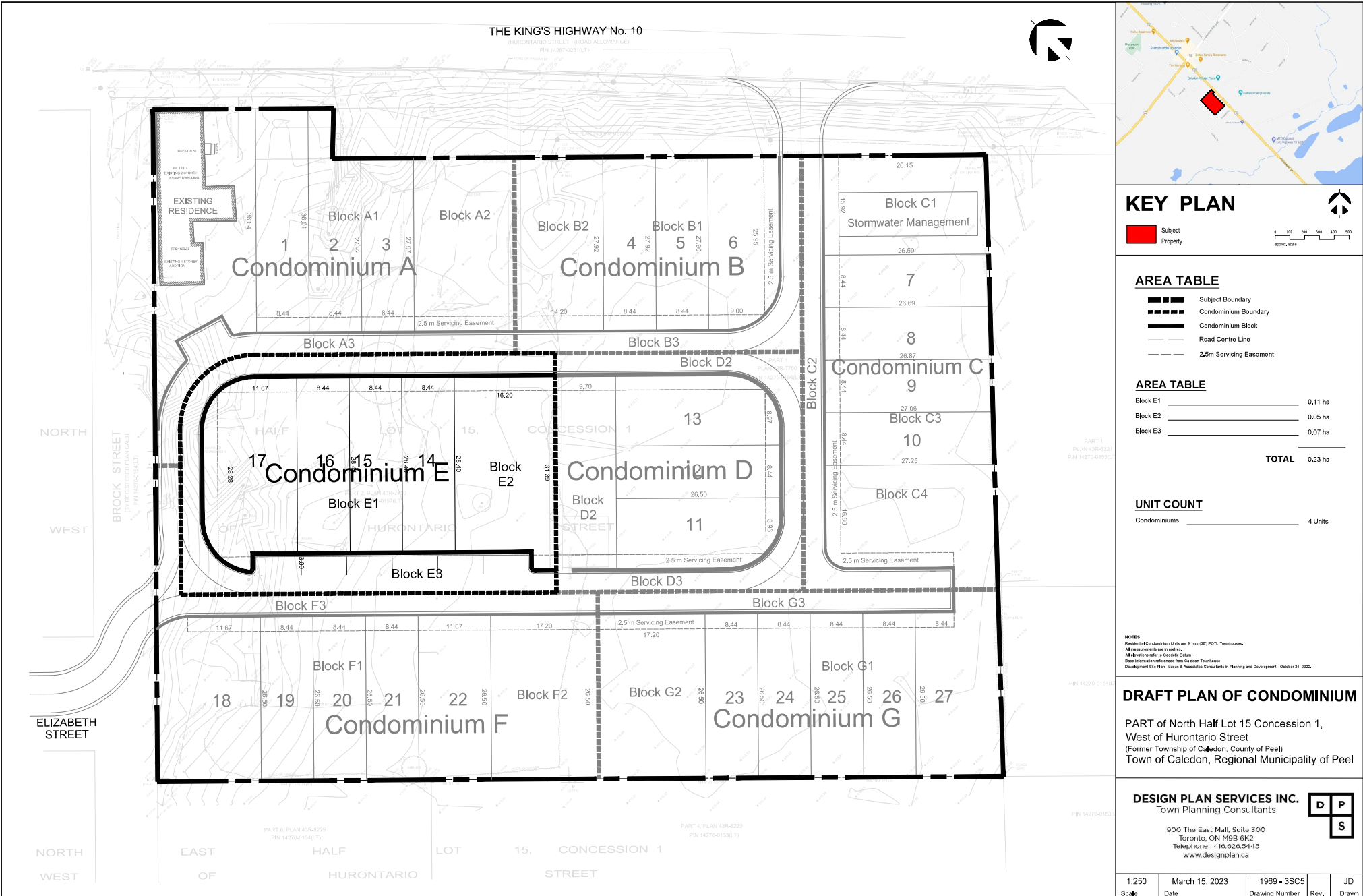


000 The East Mall, Suite 300
Toronto, ON M9B 6K2
Telephone: 416.626.5445
www.designplan.ca

1:250 Scale	March 15, 2023 Date	1969 - 3SC4 Drawing Number	Rev.	JD Drawn
----------------	------------------------	-------------------------------	------	-------------



Attachment "E5"



KEY PLAN

Subject Property

Scale: 0 100 200 300 400 500 meters

AREA TABLE

--- (Dashed line)	Subject Boundary
--- (Dotted line)	Condominium Boundary
--- (Dash-dot line)	Condominium Block
--- (Solid line)	Road Centre Line
--- (Long-dashed line)	2.5m Servicing Easement

AREA TABLE

Block E1	0,11 ha
Block E2	0,05 ha
Block E3	0,07 ha
TOTAL	0,23 ha

UNIT COUNT

Condominiums	4 Units
--------------	---------

NOTES:
 1. Resubdivided Condominium Units are 61m (200') PDR, Townhouses.
 2. All measurements are in metres.
 3. All boundaries refer to General Centre Line.
 4. Data information referenced from Caledon Township Development Officer - Local & Associates Consultants in Planning and Development - October 24, 2022.

DRAFT PLAN OF CONDOMINIUM

PART of North Half Lot 15 Concession 1,
West of Hurontario Street
(Former Township of Caledon, County of Peel)
Town of Caledon, Regional Municipality of Peel

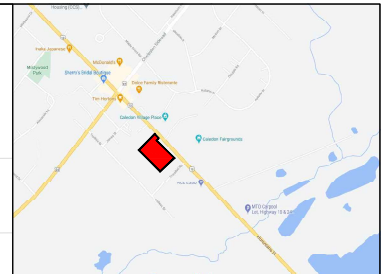
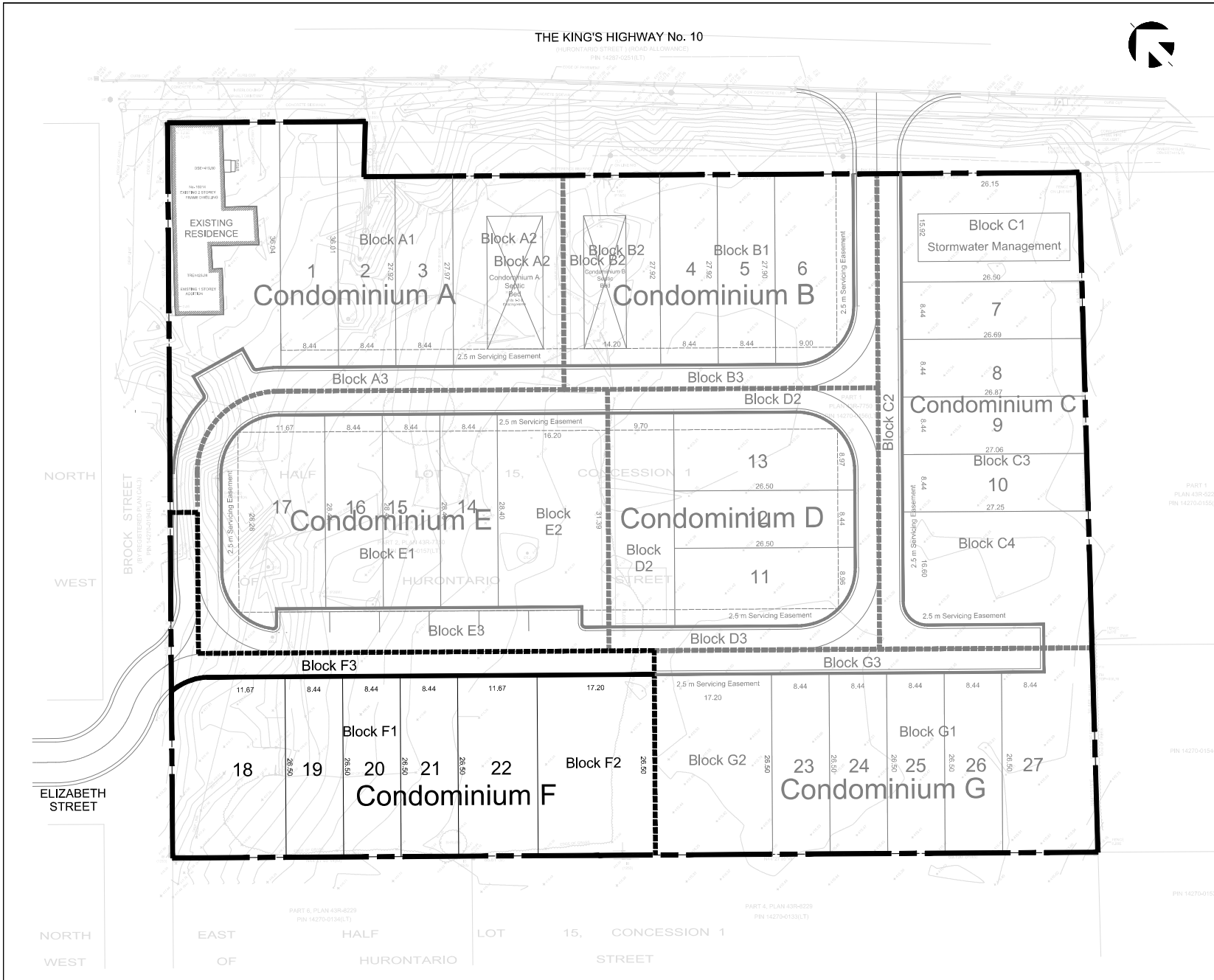
DESIGN PLAN SERVICES INC.
Town Planning Consultants

900 The Esplanade, Suite 300
Toronto, ON M9B 6K2
Telephone: 416.626.5445
www.designplan.ca

DP S

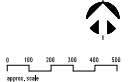
1:250 Scale	March 15, 2023 Date	1969 - 3SC5 Drawing Number	JD Rev.	JD Drawn
----------------	------------------------	-------------------------------	------------	-------------

Attachment "E6"



KEY PLAN

■ Subject
□ Property



AREA TABLE

- Subject Boundary
- Condominium Boundary
- Condominium Block
- Road Centre Line
- 2.5m Servicing Easement

AREA TABLE

Block F1	0.14 ha
Block F2	0.05 ha
Block F3	0.03 ha
TOTAL	0.22 ha

UNIT COUNT

Condominiums	5 Units
--------------	---------

NOTES:
Proposed Condominium Units are 1,146 (287) P.O.U. Townhouses.
All measurements are in metres.
All elevations refer to Canadian datum.
Base information referenced from Caledon Township
Development Site Plan - Lucas & Associates Consultants in Planning and Development - October 24, 2022.

DRAFT PLAN OF CONDOMINIUM

PART of North Half Lot 15 Concession 1,
West of Hurontario Street
(Former Township of Caledon, County of Peel)
Town of Caledon, Regional Municipality of Peel

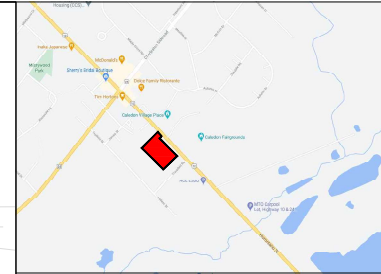
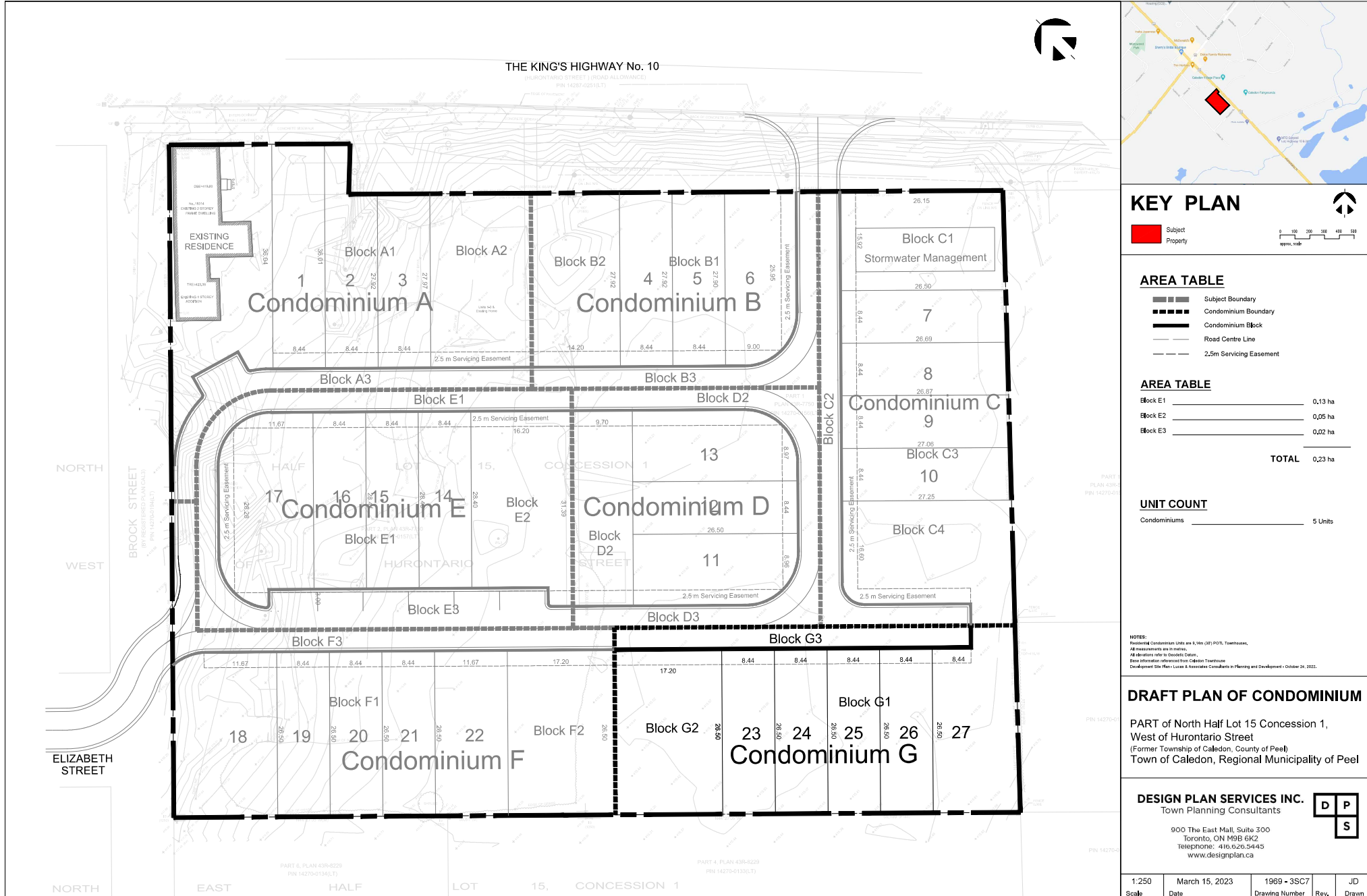
DESIGN PLAN SERVICES INC.
Town Planning Consultants



900 The East Mall, Suite 300
Toronto, ON M5B 6K2
Telephone: 416.626.5445
www.designplan.ca

1:250 Scale	March 15, 2023 Date	1969 - 3SC6 Drawing Number	JD Rev.	JD Drawn
----------------	------------------------	-------------------------------	------------	-------------

Attachment "E7"



KEY PLAN

Subject Property

0 100 200 300 400 500
metres scale

AREA TABLE

- Subject Boundary
- Condominium Boundary
- Condominium Block
- Road Centre Line
- 2.5m Servicing Easement

AREA TABLE

Block E1	0.13 ha
Block E2	0.05 ha
Block E3	0.02 ha
TOTAL	0.23 ha

UNIT COUNT

Condominiums 5 Units

NOTES:
Residential Condominium Units are 4,54m (2) P.O.T., Townhouses.
All measurements are in metres.
All alterations refer to Schedule 'C' Plans.
Best information released from Caledon Township
Development Services & Accessory Conditions in Planning and Development - October 24, 2022.

DRAFT PLAN OF CONDOMINIUM

PART of North Half Lot 15 Concession 1,
West of Hurontario Street
(Former Township of Caledon, County of Peel)
Town of Caledon, Regional Municipality of Peel

DESIGN PLAN SERVICES INC.
Town Planning Consultants



900 The East Mall, Suite 300
Toronto, ON M9B 6K2
Telephone: 416.626.5445
www.designplan.ca

1:250 Scale	March 15, 2023 Date	1969 - 35C7 Drawing Number	JD Rev.	JD Drawn
----------------	------------------------	-------------------------------	------------	-------------