

Draft Vision Statement

FUTURE CALEDOON

What We Heard

- The word cloud provides a visualization of what we heard from the community and stakeholders

Key Themes

- Statement length:
 - Keep it short and snappy
 - Provide more detail and meaning
- **The Environment:**
 - Restore reputation as Greenest Town in Ontario
 - Preservation and enhancement of the Natural Heritage System is paramount
- Future-Oriented:
 - Reflects a progressive mindset
 - May challenge desire to preserve cultural heritage and small-town feel
- Complete:
 - Define what complete means
 - Reflects a desire to be a well-rounded community



REVISED REPORT



Official Plan Policy Directions Report

KEY POLICY DIRECTIONS FOR
CALEDON'S NEW OFFICIAL PLAN

FEBRUARY 2022



Purpose of Key Policy Directions

This report is intended to:

- Clarify the direction that the new Official Plan will take based on all the information and opinions we have received so far and establish key policy direction that the new Official Plan will be “built on”.
- Provide an understanding of the strategies the Official Plan will employ to address the substantial challenges of growth and change Caledon will be addressing over the next 30 years.

Where do the Policy Directions come from?

The policy directions included in this report are based on six primary sources.

1. Provincial policies, plans and legislation
2. The Region of Peel draft Official Plan
3. Broad public engagement
4. Stakeholder engagement
5. Background studies, strategies and master plans
6. Sound planning principles and best practices

A Vision for Caledon

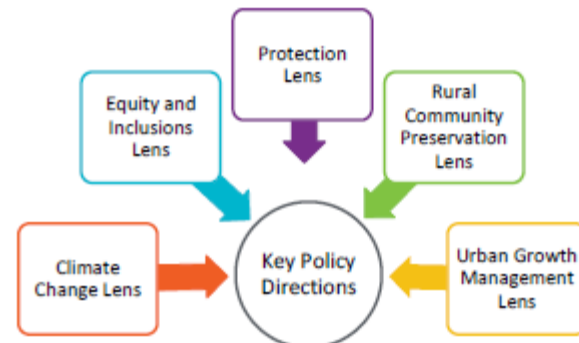
Through the public engagement process, the following draft vision statement has been established:

The key policy directions are consistent with this vision for our future Caledon.

Our Caledon is a sustainable, healthy, connected and complete community. We celebrate our heritage, diversity and rural roots and are stewards of our environment.

Five over-arching lenses

It's useful to view the key policy directions that follow through five over-arching “lenses” as follows:



Climate Change Lens

In January of 2020, Caledon Town Council declared a Climate Change Emergency and endorsed an update to the Community Climate Change Action Plan – “Resilient Caledon”. This document outlines actions in order to achieve Council’s target of carbon neutrality by 2050 and achieve a 36% reduction in emissions below 2016 levels by 2030.

This emphasizes the need to reduce our impact on climate change by managing the way we grow and develop in the next 30 years, so that we minimize our Town’s impact on climate change. At the same time, it also emphasizes the need to grow in a way that allows us to adapt to the many impacts on our Town that will come with climate change in future.

While the first key policy direction relates most specifically to our Climate Change Action Plan, all 13 of the key directions that follow should be considered within this overarching “lens”, recognizing that climate change will have a profound impact on everything we do going forward.

Equity and Inclusion Lens

The “equity and inclusion lens” recognizes that our Official Plan needs to consider the impact it will have upon groups of people who are most at risk of exclusion. This lens acknowledges the connection between age, race, language, ethnicity, socio-economic status, geographic location, gender, abilities and sexuality, to ensure the Plan will foster an inclusive and accessible community for all. The Official Plan strengthens community building and reconciliation by integrating opportunities for walkable communities, neighbourhood connectivity, affordable housing, access to parks and more. Planning for equity contributes to the development of sustainable, resilient and healthy

communities by more effectively and systematically addressing community well-being.

Protection Lens

The “protection lens” recognizes that our Official Plan needs to protect those things in Caledon we cherish most, as the Town grows and evolves over the next 30 years. This lens acknowledges that less than 20% of Caledon’s geographic area is planned for urban development - about 80% of our future Caledon will be dedicated to protecting our agricultural and environmental lands over the long-term. This protection lens also relates to such things as our cultural heritage and our desire to conserve these important historical resources over the long-term.

Rural Community Preservation Lens

The “rural community preservation lens” recognizes that Caledon has long and deep rural roots. The Town consists of many hamlets and villages that must be carefully nurtured and preserved over the next 30 years. It will be important to allow only limited amounts of growth that will support their long-term sustainability while preserving their rural character and community qualities.

Urban Growth Management Lens

Our new plan must recognize that a major transformation will take place in Caledon as the Town’s southern geographic area will become urban in character. The “urban growth management lens” helps us to understand the importance of managing this urban growth, so it is not just beneficial over the short term, but will help us to be environmentally, socially and economically prosperous over the long-term. Through this lens we want to grow an urban area that offers a



strong identity, an outstanding quality of life, affordability, rich urban amenities and healthy lifestyles.

Key Policy Directions for the new Official Plan

In reviewing the background studies, the provincial and regional plans and the engagement feedback undertaken to date, 13 key policy directions have been proposed as the foundation of the new Official Plan.

#1 Address Climate Change in everything we do

– a) Mitigation

We will take every opportunity to minimize our impact on climate change.

– b) Adaptation

We will understand and prepare our Town for the impacts that will come with climate change.

#2 Protect our Agricultural Lands

We will protect our agricultural lands so they are sustainable and productive over the long-term.

#3 Preserve our Environmental Areas

We will preserve and restore our natural heritage and water resource systems so they are healthy and sustainable over the long-term.

#4 Conserve our Cultural Heritage

We will conserve and celebrate our heritage buildings, sites, districts, landscapes and our archaeological resources so they share the story of our history with future generations.

#5 Manage our Aggregate Resources

We will identify and conserve our mineral aggregate resources, manage their extraction, minimize their impacts and progressively rehabilitate operations.

#6 Protect and Nurture our Rural Communities

We will recognize our rural roots, protect and nurture the character, economy and quality of our rural communities.

#7 Manage and Support Growth for our Long-term Benefit

We will manage and support growth so we can maximize our prosperity over the long-term.

#8 Create Healthy and Complete Neighbourhoods

We will plan for healthy and complete neighbourhoods that offer a mix of housing opportunities, a wide range of community amenities and easy access to the goods and services we require daily without using a car.

#9 Design Great Urban Places

We will plan and design the urban area of Caledon so that it becomes a mosaic of vibrant, well designed and fulfilling urban places.

#10 Create High Quality Mobility Options

We will create an effective transportation system that supports all forms of mobility, with an emphasis on creating great walking, cycling and transit infrastructure so Caledon residents are not car dependent.

#11 Pursue Housing Affordability

We will take actions to improve the affordability of housing across Caledon and foster the development of various forms of affordable housing to serve those in our community who need it.

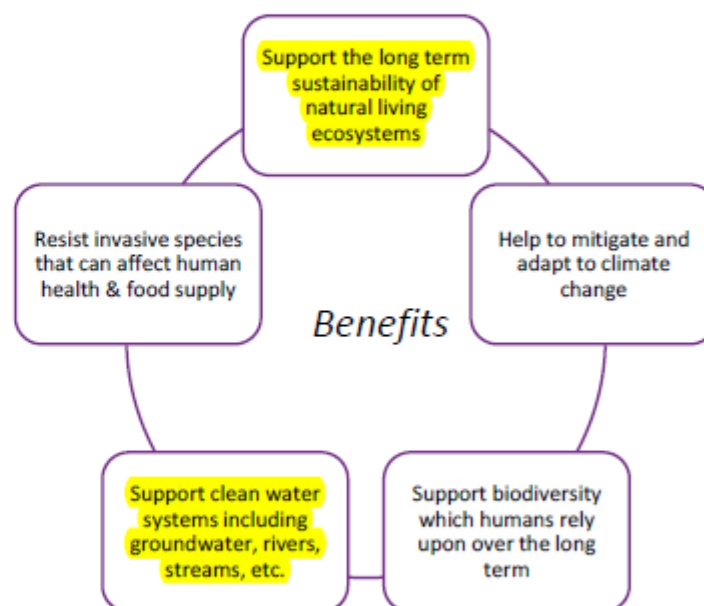


Key Direction #3 – Preserve our Environmental Areas

We will preserve and restore our natural heritage and water resource systems so they are healthy and sustainable over the long-term.

- Protect our environmental features and areas within the Niagara Escarpment, the Oak Ridges Moraine and the Greenbelt.
- Clearly define our natural heritage system and water resource system, and its components, consistent with updated mapping and policies in provincial plans and the regional plan.
- Complete watershed and sub-watershed plans and establish targets prior to, or together with, secondary plans to conserve and manage our natural heritage system at this broad level.
- Protect key natural heritage features and areas, water resource features and areas and, adjacent lands and vegetation protection zones consistent with updated provincial and regional policies.
- In collaboration with Conservation Authorities, identify and introduce new policies regarding urban river valleys and stream corridors, consistent with the Greenbelt Plan and the Region of Peel Plan.
- Ensure that stormwater management infrastructure is not located within inappropriate areas of our natural heritage system and that such infrastructure is designed and constructed to protect and restore the natural heritage and water resource system.
- Protect our vulnerable aquifers and wellhead protection areas.
- In consultation with the Conservation Authorities, take a deliberate approach towards stewardship and management of our natural heritage and water resource system to maintain, restore and improve it. Explore opportunities for more municipal ownership.
- Plan for greenways and re-naturalization areas to create linkages that connect and complete natural heritage areas.

- Plan for trail systems within natural heritage areas, such that the most sensitive natural features and areas are avoided.
- Ensure that existing and new infrastructure of all kinds does not undermine the ecological integrity of our natural heritage and water resource systems.

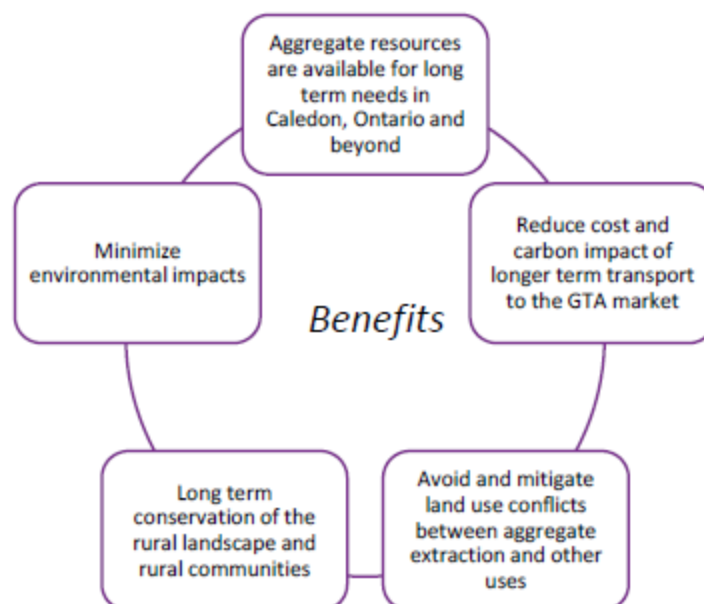


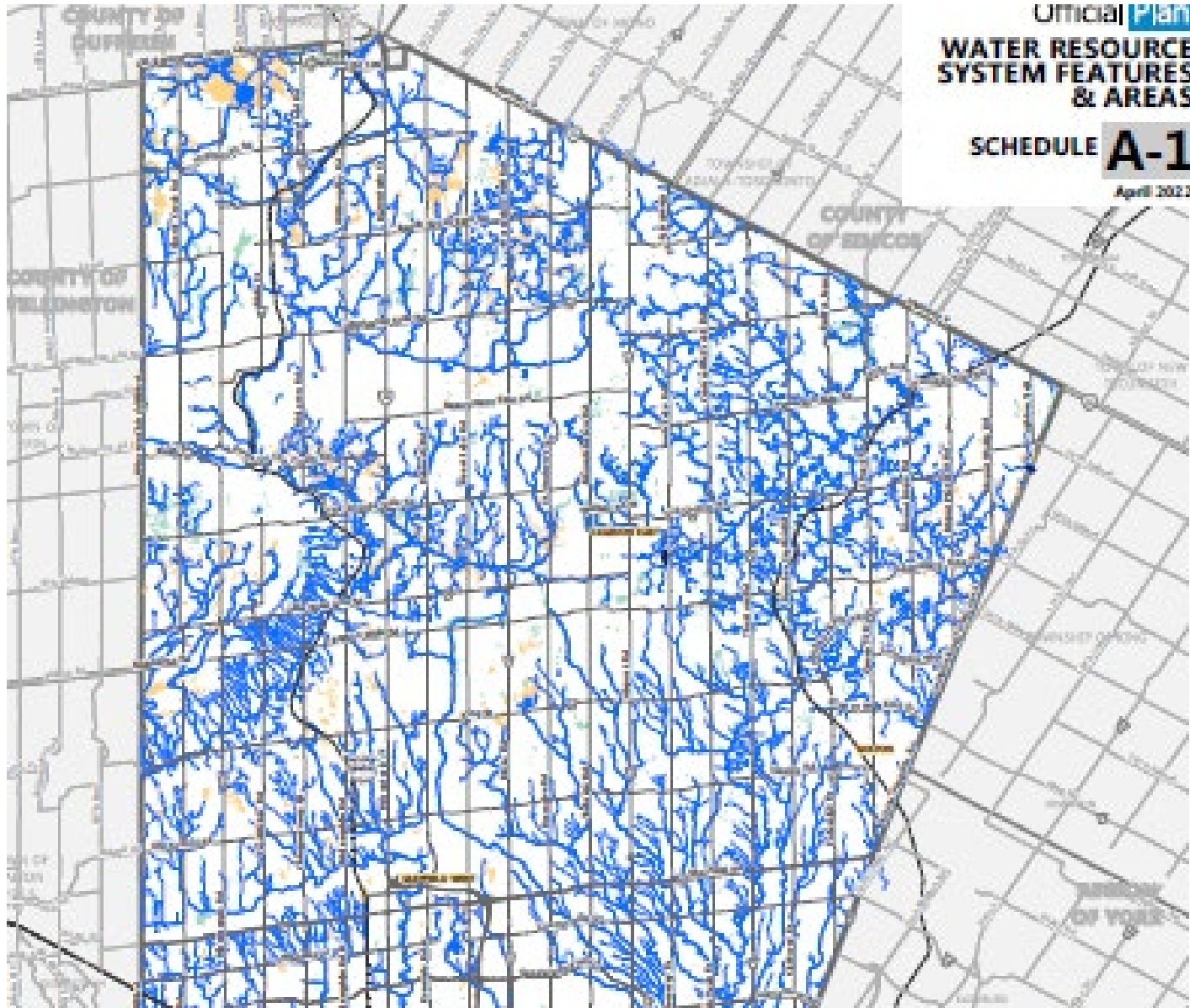
Key Direction #5 – Manage our Aggregate Resources

We will identify and conserve our mineral aggregate resources, manage their extraction, mitigate their impacts and progressively rehabilitate operations.

- Identify reasonable and feasible high potential mineral aggregate resources and protect them from development and site alteration for potential future extraction over the long-term.
- Recognize the importance of Caledon's aggregate resources for supplying near-market raw materials required by the construction industry to facilitate planned population and employment growth needs to 2051.
- Recognize the potential impact that new or expanded aggregate operations can have on the natural environment, cultural heritage and agricultural operations and existing residential communities.
- As required by provincial policy, undertake Agricultural Impact Assessments in the evaluation of proposals to establish new aggregate operations or expand existing ones.
- In collaboration with the Region and Province, explore establishing a guideline document for assessing the cumulative impacts of multiple aggregate extraction operations.
- Where appropriate, utilize existing aggregate operations to establish accessory uses for the purpose of recycling mineral aggregates.
- In collaboration with the Region and Province, develop a comprehensive rehabilitation approach for Caledon with broader landscape-level targets rehabilitation and after-use.
- In collaboration with the Region, undertake a study on aggregate truck movements to identify the implications for road infrastructure, congestion, safety, air quality and noise.

- In collaboration with the Region, undertake an Aggregate Policy Review Study to formulate a policy framework and address community impacts.





Official Plan
**WATER RESOURCE
SYSTEM FEATURES
& AREAS**

SCHEDULE **A-1**

April 2022