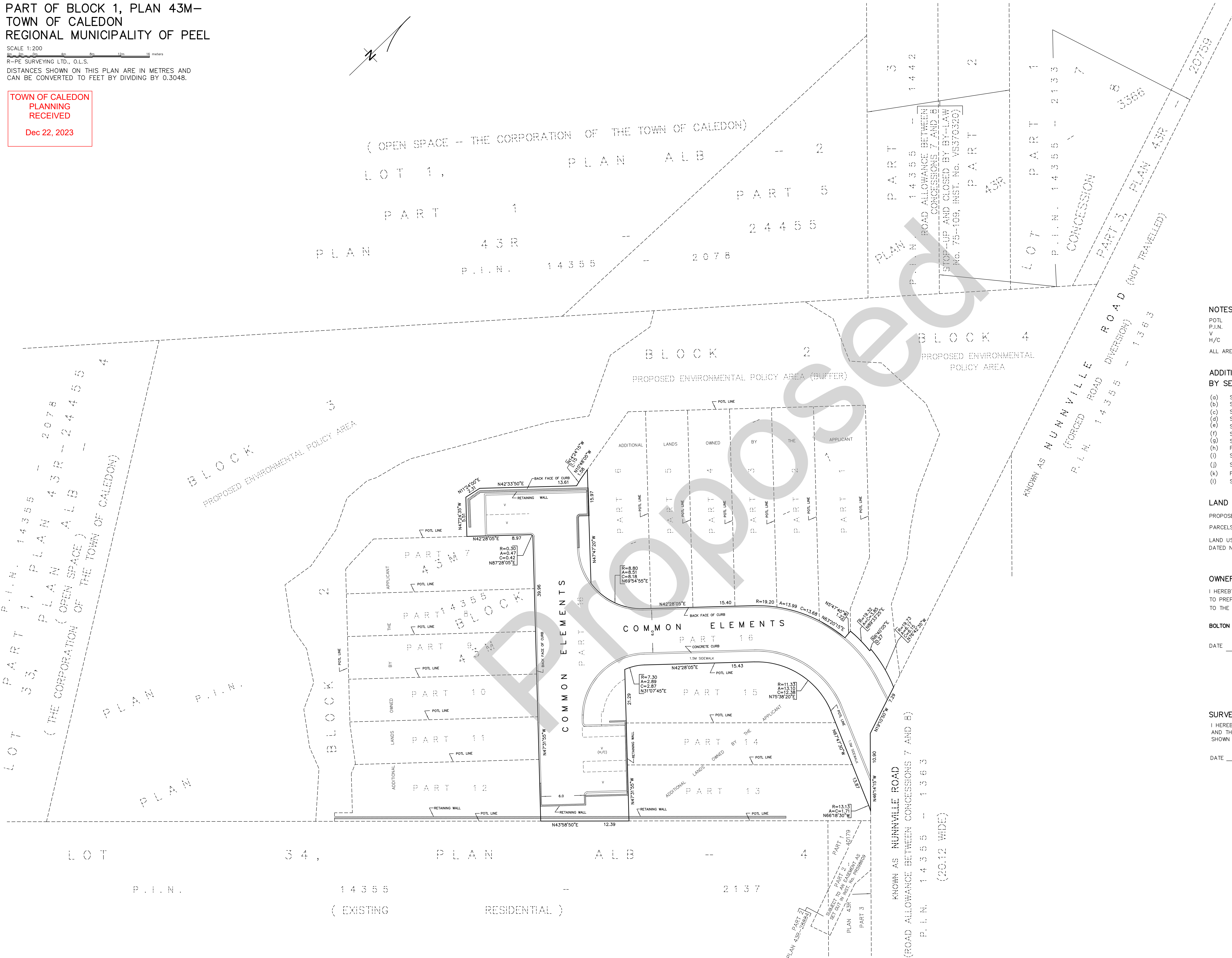
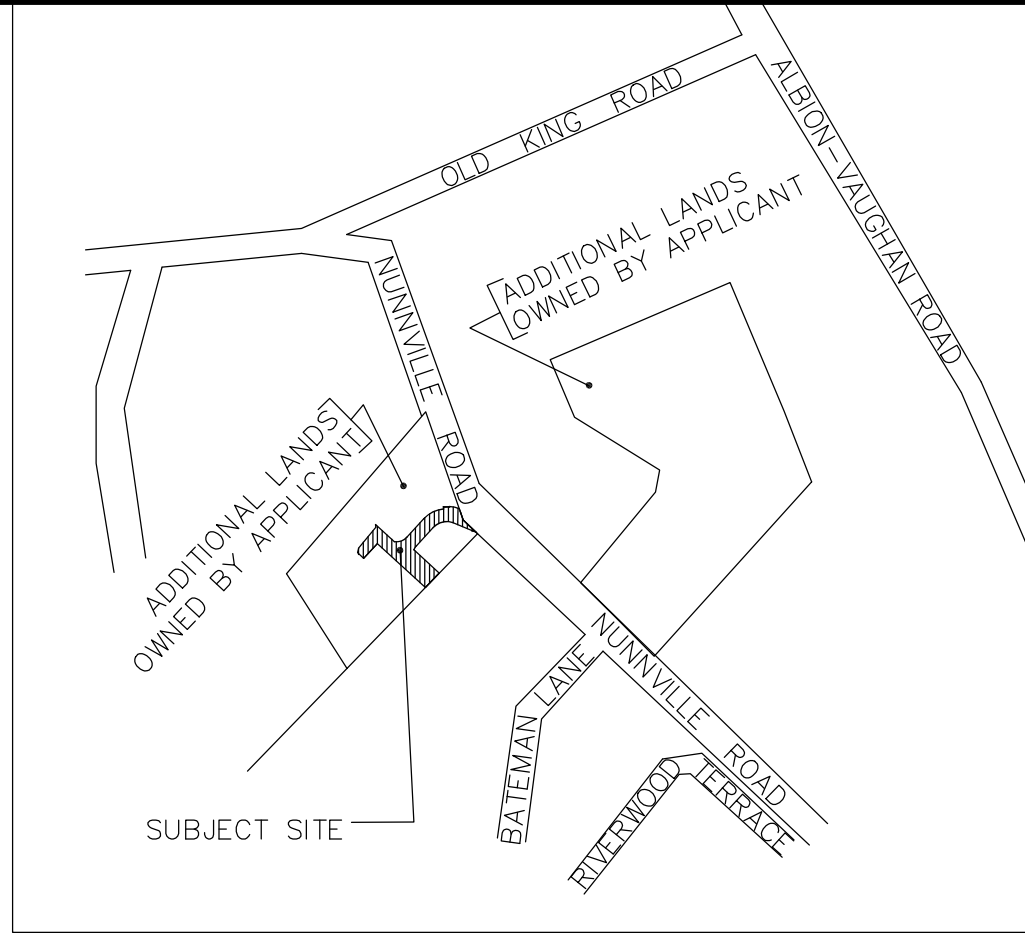


DRAFT PLAN OF COMMON ELEMENTS CONDOMINIUM
PART OF BLOCK 1, PLAN 43M-
TOWN OF CALEDON
REGIONAL MUNICIPALITY OF PEEL

SCALE 1:200
R-PE SURVEYING LTD., O.L.S.
DISTANCES SHOWN ON THIS PLAN ARE IN METRES AND
CAN BE CONVERTED TO FEET BY DIVIDING BY 0.3048.

TOWN OF CALEDON
PLANNING
RECEIVED
Dec 22, 2023



NOTES
 POTL DENOTES PARCEL OF TIED LAND
 P.I.N. DENOTES PROPERTY IDENTIFIER NUMBER
 V DENOTES VISITOR PARKING
 H/C DENOTES HANDICAP PARKING
 ALL AREA MEASUREMENTS ARE COMPUTER GENERATED.

ADDITIONAL INFORMATION AS REQUIRED BY SECTION 51(17) OF THE PLANNING ACT

- (a) SEE PLAN
- (b) SEE PLAN
- (c) SEE PLAN
- (d) SEE RESIDENTIAL
- (e) SEE PLAN
- (f) SEE PLAN
- (g) SEE PLAN AND KEY PLAN
- (h) PIPED WATER
- (i) SEE SOIL REPORT
- (j) SEE SITE AND GRADING PLAN
- (k) FULLY SERVICED
- (l) SEE PLAN

LAND USE
 PROPOSED SITE AREA (COMMON ELEMENTS AREA) = 0.093 Ha.
 PARCELS OF TIED LAND (POTL): 15 POTLS
 LAND USE INFORMATION OBTAINED FROM SITE PLAN PREPARED BY VA3 DESIGN INC., DATED NOVEMBER 11, 2023.

OWNER'S AUTHORIZATION
 I HEREBY AUTHORIZE R-PE SURVEYING LTD., O.L.S. TO PREPARE AND SUBMIT THIS DRAFT PLAN OF COMMON ELEMENTS CONDOMINIUM TO THE TOWN OF CALEDON FOR APPROVAL.

BOLTON SUMMIT DEVELOPMENTS INC.
 DATE NOVEMBER 17th, 2023

 SAM MORRA
 AUTHORIZED SIGNING OFFICER
 I HAVE THE AUTHORITY TO BIND THE CORPORATION

SURVEYOR'S CERTIFICATE
 I HEREBY CERTIFY THAT THE BOUNDARIES OF THE LAND TO BE SUBDIVIDED AND THEIR RELATIONSHIP TO ADJOINING LANDS ARE ACCURATELY AND CORRECTLY SHOWN ON THIS PLAN.
 DATE NOVEMBER 17th, 2023

S. GODEWARDENA
 ONTARIO LAND SURVEYOR