

## PROPERTY SUMMARY

### CANDIDATE FOR LISTING ON HERITAGE REGISTER

**Address:** 523 Bush Street, BELFOUNTAIN

**Roll Number:** 212403000912500

**Legal Description:** CON 5 WHS PT LOT 10

**Built Heritage Resource Inventory Record Number:** 266

**Ward:** 1



#### Design/Physical Description:

- 1½ storey house, Gothic Revival style, centre entry, symmetrically placed windows, decorative fretwork along centre gable

#### Historical Description:

- Period of construction: 1875-1899

#### Contextual Description: (See reverse for aerial photo)

- The property is in Belfountain which developed around an early grist mill and saw mill on the West Credit River. With its first plan of subdivision in 1853 the village started to evolve, influenced by water-based industry, nearby quarrying, the arrival of the railway and the later interests in recreational activities.

#### Associated Structures:

**Form Completion Date:** March 20, 2018

**Photo Date:** August 2016







## PROPERTY SUMMARY

### CANDIDATE FOR LISTING ON HERITAGE REGISTER

**Address:** 628 Bush Street, BELFOUNTAIN

**Roll Number:** 2124030009118100000

**Legal Description:** CON 5 WHS PT LOT 10 PT PCL 5 RP 43R5089 PART 2 REG 0.68AC  
90.00FR 315.80D

**Built Heritage Resource Inventory Record Number:** 265

**Ward:** 1



#### Design/Physical Description:

- 1½ storey house, Dutch Colonial Revival style, frame construction

#### Historical Description:

- Built circa 1900-1924

#### Contextual Description: (See reverse for aerial photo)

- The property is in Belfountain which developed around an early grist mill and saw mill on the West Credit River. With its first plan of subdivision in 1853 the village started to evolve, influenced by water-based industry, nearby quarrying, the arrival of the railway and the later interests in recreational activities.

#### Associated Structures:

**Form Completion Date:** March 20, 2018

**Photo Date:** August 2016







## PROPERTY SUMMARY

### CANDIDATE FOR LISTING ON HERITAGE REGISTER

**Address:** 684 Bush Street, BELFOUNTAIN

**Roll Number:** 212403000911300

**Legal Description:** CON 5 WHS PT LOT 10 PCL 13, REG

**Built Heritage Resource Inventory Record Number:** 263

**Ward:** 1



#### Design/Physical Description:

- 1½ storey house, Neoclassical style, frame construction, centre entry
- Verandah now wraps around the structure, upper dormer window is new

#### Historical Description:

- Period of construction: 1850-1874

#### Contextual Description: (See reverse for aerial photo)

- The property is in Belfountain which developed around an early grist mill and saw mill on the West Credit River. With its first plan of subdivision in 1853 the village started to evolve, influenced by water-based industry, nearby quarrying, the arrival of the railway and the later interests in recreational activities.

#### Associated Structures:

**Form Completion Date:** March 20, 2018

**Photo Date:** August 2016







## PROPERTY SUMMARY

### CANDIDATE FOR LISTING ON HERITAGE REGISTER

**Address:** 699 Bush Street, BELFOUNTAIN

**Roll Number:** 212403000913000

**Legal Description:** CON 5 WHS PT W LOT 10, IRREG

**Built Heritage Resource Inventory Record Number:** 262

**Ward:** 1



#### Design/Physical Description:

- 1½ storey house, Neoclassical style, frame construction

#### Historical Description:

- Built circa 1860, Drury House

#### Contextual Description: (See reverse for aerial photo)

- The property is in Belfountain which developed around an early grist mill and saw mill on the West Credit River. With its first plan of subdivision in 1853 the village started to evolve, influenced by water-based industry, nearby quarrying, the arrival of the railway and the later interests in recreational activities.

#### Associated Structures:

**Form Completion Date:** March 20, 2018

**Photo Date:** March 2018







## PROPERTY SUMMARY

### CANDIDATE FOR LISTING ON HERITAGE REGISTER

**Address:** 700 Bush Street, BELFOUNTAIN

**Roll Number:** 212403000911000

**Legal Description:** CON 5 WHS PT LOT 10, IRREG

**Built Heritage Resource Inventory Record Number:** 261

**Ward:** 1



#### Design/Physical Description:

- 1½ storey commercial building, recessed storefront, roughcast exterior

#### Historical Description:

- Built circa 1875-1899

#### Contextual Description: (See reverse for aerial photo)

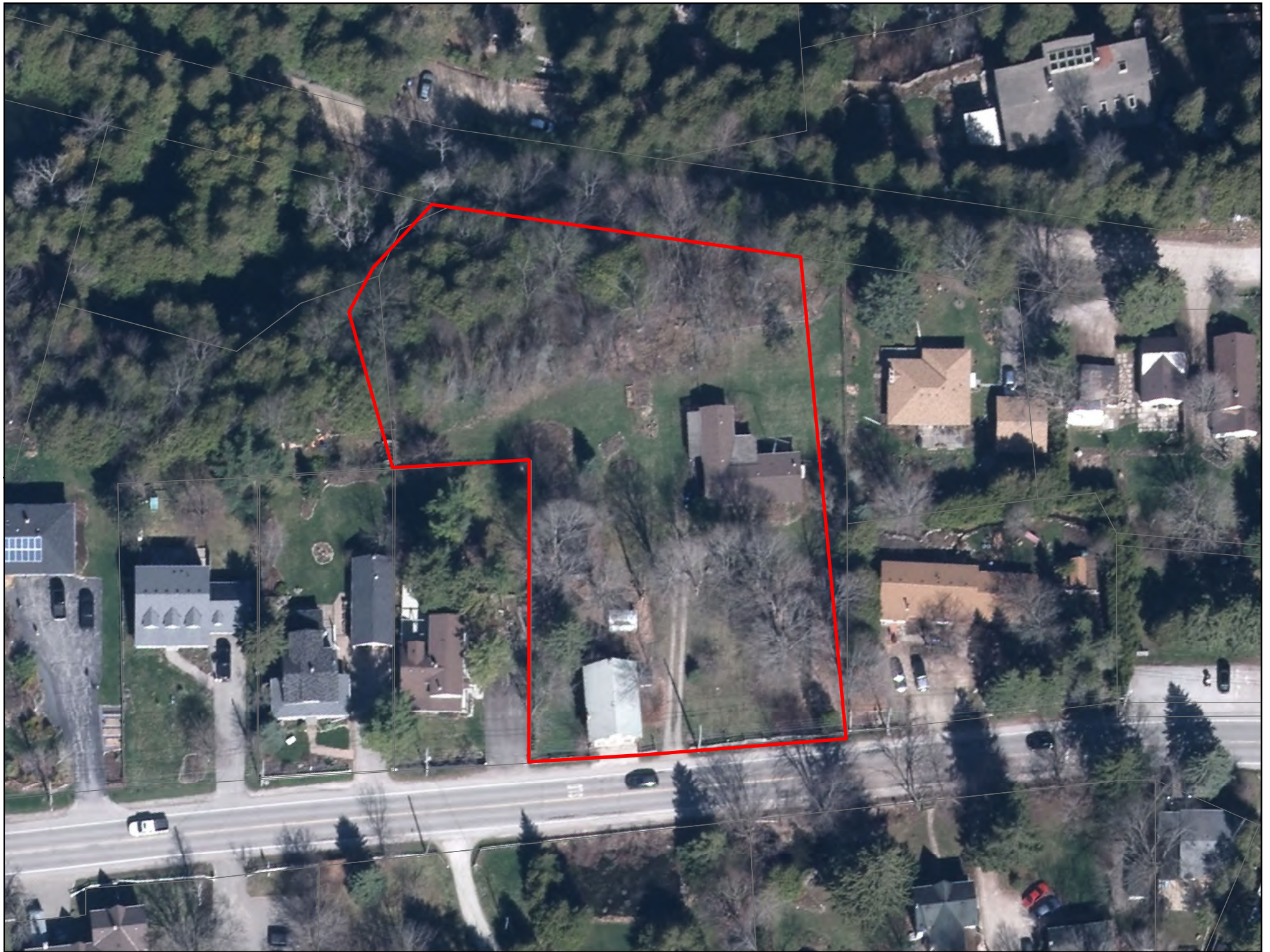
- The property is in Belfountain which developed around an early grist mill and saw mill on the West Credit River. With its first plan of subdivision in 1853 the village started to evolve, influenced by water-based industry, nearby quarrying, the arrival of the railway and the later interests in recreational activities.

#### Associated Structures:

**Form Completion Date:** March 20, 2018

**Photo Date:** March 2018







<b>PROPERTY SUMMARY</b>	
<b>CANDIDATE FOR LISTING ON HERITAGE REGISTER</b>	
<b>Address:</b> 803 Forks of Credit Road, BELFOUNTAIN	
<b>Roll Number:</b> 212403000909750	
<b>Legal Description:</b> PLAN CAL20 PT LOT 3	
<b>Built Heritage Resource Inventory Record Number:</b> 296	<b>Ward:</b> 1
	
<b>Design/Physical Description:</b> <ul style="list-style-type: none"> <li>○ 1½ storey house, Gothic Revival style, frame construction, decorative fretwork trim along all gables, board-and-batten exterior cladding</li> </ul>	
<b>Historical Description:</b> <ul style="list-style-type: none"> <li>○ Period of construction: 1875-1899</li> </ul>	
<b>Contextual Description:</b> (See reverse for aerial photo) <ul style="list-style-type: none"> <li>○ The property is in Belfountain which developed around an early grist mill and saw mill on the West Credit River. With its first plan of subdivision in 1853 the village started to evolve, influenced by water-based industry, nearby quarrying, the arrival of the railway and the later interests in recreational activities.</li> </ul>	
<b>Associated Structures:</b>	
<b>Form Completion Date:</b> March 20, 2018	<b>Photo Date:</b> August 2016





## PROPERTY SUMMARY

### CANDIDATE FOR LISTING ON HERITAGE REGISTER

**Address:** 815 Forks of Credit Road, BELFOUNTAIN

**Roll Number:** 212403000909800

**Legal Description:** PLAN CAL20 LOT 1 PT LOT 2

**Built Heritage Resource Inventory Record Number:** 230

**Ward:** 1



#### Design/Physical Description:

- 1½ storey house, Italianate style, red brick cladding, brick hood (drip) moulds above the windows

#### Historical Description:

- Built circa 1875-1899

#### Contextual Description: (See reverse for aerial photo)

- The property is in Belfountain which developed around an early grist mill and saw mill on the West Credit River. With its first plan of subdivision in 1853 the village started to evolve, influenced by water-based industry, nearby quarrying, the arrival of the railway and the later interests in recreational activities.

#### Associated Structures:

**Form Completion Date:** March 20, 2018

**Photo Date:** August 2016







## PROPERTY SUMMARY

### CANDIDATE FOR LISTING ON HERITAGE REGISTER

**Address:** 17180 Old Main Street, BELFOUNTAIN

**Roll Number:** 2124030009035000000

**Legal Description:** PLAN CAL20 PT LOT 15 REG

**Built Heritage Resource Inventory Record Number:** 255

**Ward:** 1



#### Design/Physical Description:

- Single storey house, Bungalow style, centre entry, symmetrically placed windows

#### Historical Description:

- Built circa 1900-1924

#### Contextual Description: (See reverse for aerial photo)

- The property is in Belfountain which developed around an early grist mill and saw mill on the West Credit River. With its first plan of subdivision in 1853 the village started to evolve, influenced by water-based industry, nearby quarrying, the arrival of the railway and the later interests in recreational activities.

#### Associated Structures:

**Form Completion Date:** March 20, 2018

**Photo Date:** August 2016







## PROPERTY SUMMARY

### CANDIDATE FOR LISTING ON HERITAGE REGISTER

**Address:** 17190 Old Main Street, BELFOUNTAIN

**Roll Number:** 212403000903300

**Legal Description:** PLAN CAL20 PT LOT 15 MAIN ST

**Built Heritage Resource Inventory Record Number:** 254

**Ward:** 1



#### Design/Physical Description:

- 1½ storey house, frame construction, verandah enclosed

#### Historical Description:

- Built circa 1900-1924

#### Contextual Description: (See reverse for aerial photo)

- The property is in Belfountain which developed around an early grist mill and saw mill on the West Credit River. With its first plan of subdivision in 1853 the village started to evolve, influenced by water-based industry, nearby quarrying, the arrival of the railway and the later interests in recreational activities.

#### Associated Structures:

**Form Completion Date:** March 20, 2018

**Photo Date:** March 2018







## PROPERTY SUMMARY

### CANDIDATE FOR LISTING ON HERITAGE REGISTER

**Address:** 17196 Old Main Street, BELFOUNTAIN

**Roll Number:** 212403000903200

**Legal Description:** PLAN CAL20 PT LOT 15

**Built Heritage Resource Inventory Record Number:** 253

**Ward:** 1



#### Design/Physical Description:

- 1 storey house, fieldstone walls, hip roof, dormer windows
- Cottage built on the site of a former Methodist Church and uses the fieldstone walls of the earlier church

#### Historical Description:

- Built circa 1850-1874

#### Contextual Description: (See reverse for aerial photo)

- The property is in Belfountain which developed around an early grist mill and saw mill on the West Credit River. With its first plan of subdivision in 1853 the village started to evolve, influenced by water-based industry, nearby quarrying, the arrival of the railway and the later interests in recreational activities.

#### Associated Structures:

**Form Completion Date:** March 20, 2018

**Photo Date:** March 2018







## PROPERTY SUMMARY

### CANDIDATE FOR LISTING ON HERITAGE REGISTER

**Address:** 17200 Old Main Street, BELFOUNTAIN

**Roll Number:** 212403000829200

**Legal Description:** CON 5 WHS PT LOT 9 RP, 43R9297 PART 1

**Built Heritage Resource Inventory Record Number:** 267

**Ward:** 1



#### Design/Physical Description:

- 1½ storey farmhouse, High Victorian Gothic style (from BHRI), red brick with contrasting yellow brick detailing, projecting front bay with pointed-arched window
- See barn image below

#### Historical Description:

- Built circa 1875-1899

#### Contextual Description: (See reverse for aerial photo)

- The property is in Belfountain which developed around an early grist mill and saw mill on the West Credit River. With its first plan of subdivision in 1853 the village started to evolve, influenced by water-based industry, nearby quarrying, the arrival of the railway and the later interests in recreational activities.

#### Associated Structures:

**Form Completion Date:** March 20, 2018

**Photo Date:**  
BHRI photo











## PROPERTY SUMMARY

### CANDIDATE FOR LISTING ON HERITAGE REGISTER

**Address:** 17204 Old Main Street, BELFOUNTAIN

**Roll Number:** 2124030009031000000

**Legal Description:** PLAN CAL2 LOT 8 BELFOUNTAIN HALL

**Built Heritage Resource Inventory Record Number:** 252

**Ward:** 1



### Design/Physical Description:

- Community Hall, board-and-batten exterior cladding

### Historical Description:

- Built circa 1875-1899

### Contextual Description: (See reverse for aerial photo)

- The property is in Belfountain which developed around an early grist mill and saw mill on the West Credit River. With its first plan of subdivision in 1853 the village started to evolve, influenced by water-based industry, nearby quarrying, the arrival of the railway and the later interests in recreational activities.

### Associated Structures:

**Form Completion Date:** March 20, 2018

**Photo Date:** March 2018







<b>PROPERTY SUMMARY</b>	
<b>CANDIDATE FOR LISTING ON HERITAGE REGISTER</b>	
<b>Address:</b> 17216 Old Main Street, BELFOUNTAIN	
<b>Roll Number:</b> 212403000902910	
<b>Legal Description:</b> PLAN CAL2 PT LOTS 7,8 RP, 43R11483 PT 1	
<b>Built Heritage Resource Inventory Record Number:</b> 250	<b>Ward:</b> 1
	
<b>Design/Physical Description:</b> <ul style="list-style-type: none"> <li>○ 1½ storey, L plan, Victorian Gothic style house, parged exterior, verandah</li> </ul>	
<b>Historical Description:</b> <ul style="list-style-type: none"> <li>○ Built circa 1850-1874</li> </ul>	
<b>Contextual Description:</b> (See reverse for aerial photo) <ul style="list-style-type: none"> <li>○ The property is in Belfountain which developed around an early grist mill and saw mill on the West Credit River. With its first plan of subdivision in 1853 the village started to evolve, influenced by water-based industry, nearby quarrying, the arrival of the railway and the later interests in recreational activities.</li> </ul>	
<b>Associated Structures:</b>	
<b>Form Completion Date:</b> March 20, 2018	<b>Photo Date:</b> August 2016







<b>PROPERTY SUMMARY</b>	
<b>CANDIDATE FOR LISTING ON HERITAGE REGISTER</b>	
<b>Address:</b> 17228 Old Main Street, BELFOUNTAIN	
<b>Roll Number:</b> 212403000902600	
<b>Legal Description:</b> PLAN CAL2 PT NW LOT	
<b>Built Heritage Resource Inventory Record Number:</b> 246	<b>Ward:</b> 1
	
<b>Design/Physical Description:</b> <ul style="list-style-type: none"> <li>○ Single storey house, frame construction, board-and-batten exterior cladding</li> </ul>	
<b>Historical Description:</b> <ul style="list-style-type: none"> <li>○ Built circa 1900-1924</li> </ul>	
<b>Contextual Description:</b> (See reverse for aerial photo) <ul style="list-style-type: none"> <li>○ The property is in Belfountain which developed around an early grist mill and saw mill on the West Credit River. With its first plan of subdivision in 1853 the village started to evolve, influenced by water-based industry, nearby quarrying, the arrival of the railway and the later interests in recreational activities.</li> </ul>	
<b>Associated Structures:</b>	
<b>Form Completion Date:</b> March 20, 2018	<b>Photo Date:</b> August 2016







## PROPERTY SUMMARY

### CANDIDATE FOR LISTING ON HERITAGE REGISTER

**Address:** 17263 Old Main Street, BELFOUNTAIN

**Roll Number:** 2124030009049000000

**Legal Description:** PLAN CAL20 PT LOT 4

**Built Heritage Resource Inventory Record Number:** 240

**Ward:** 1



#### Design/Physical Description:

- Single storey cottage, Regency style, hip roof (truncated), centre entry, frame construction
- addition to the rear; verandah has been enclosed

#### Historical Description:

- Built circa 1900-1924

#### Contextual Description: (See reverse for aerial photo)

- The property is in Belfountain which developed around an early grist mill and saw mill on the West Credit River. With its first plan of subdivision in 1853 the village started to evolve, influenced by water-based industry, nearby quarrying, the arrival of the railway and the later interests in recreational activities.

#### Associated Structures:

**Form Completion Date:** March 20, 2018

**Photo Date:** March 2018







## PROPERTY SUMMARY

### CANDIDATE FOR LISTING ON HERITAGE REGISTER

**Address:** 17277 Old Main Street, BELFOUNTAIN

**Roll Number:** 212403000905000

**Legal Description:** PLAN CAL2 PT LOT 4 PLAN, CAL20 LTS 3,4,5,PT LT 2

**Built Heritage Resource Inventory Record Number:** 238

**Ward:** 1



### Design/Physical Description:

- 1½ storey commercial structure, frame construction, centre entry

### Historical Description:

- Built circa 1850-1874
- Building has evolved from its origins as a forge, then converted to a carriage works; by early 20<sup>th</sup> century it became a garage and is now a store

### Contextual Description: (See reverse for aerial photo)

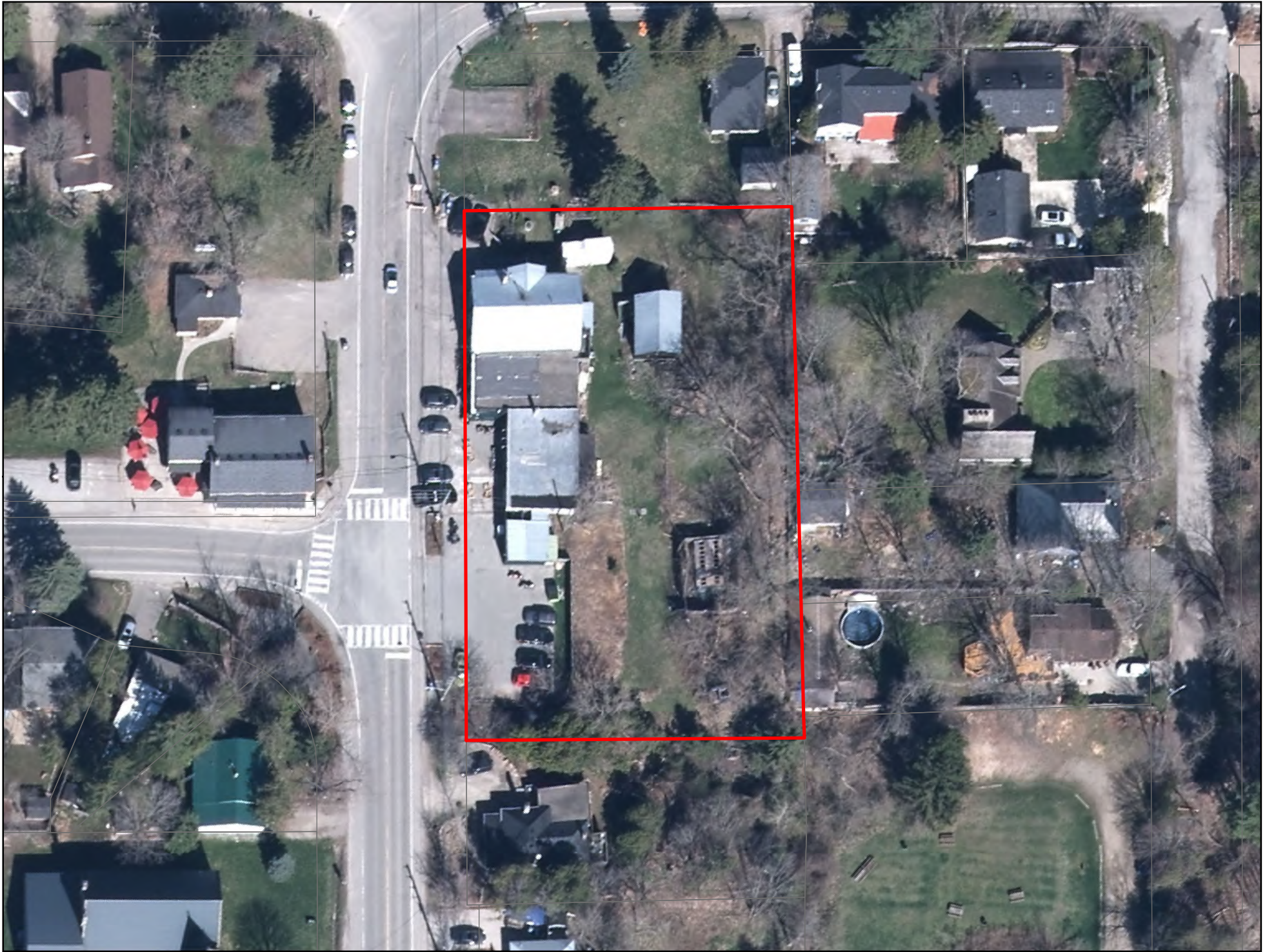
- The property is in Belfountain which developed around an early grist mill and saw mill on the West Credit River. With its first plan of subdivision in 1853 the village started to evolve, influenced by water-based industry, nearby quarrying, the arrival of the railway and the later interests in recreational activities.

### Associated Structures:

**Form Completion Date:** March 20, 2018

**Photo Date:** March 2018







## PROPERTY SUMMARY

### CANDIDATE FOR LISTING ON HERITAGE REGISTER

**Address:** 3 Pinnacle Street, BELFOUNTAIN

**Roll Number:** 212403000902000

**Legal Description:** PLAN CAL20 PT LOTS 2,3, REG

**Built Heritage Resource Inventory Record Number:** 233

**Ward:** 1



#### Design/Physical Description:

- Ontario Cottage, Regency style, centre entry, hip roof, verandah

#### Historical Description:

- Built circa 1900-1924

#### Contextual Description: (See reverse for aerial photo)

- The property is in Belfountain which developed around an early grist mill and saw mill on the West Credit River. With its first plan of subdivision in 1853 the village started to evolve, influenced by water-based industry, nearby quarrying, the arrival of the railway and the later interests in recreational activities.

#### Associated Structures:

**Form Completion Date:** March 20, 2018

**Photo Date:** March 2018







## PROPERTY SUMMARY

### CANDIDATE FOR LISTING ON HERITAGE REGISTER

**Address:** 10 Pinnacle Street, BELFOUNTAIN

**Roll Number:** 2124030009015000000

**Legal Description:** CON 5 WHS PT E LOT 10 PLAN CAL20 LOTS 3,4

**Built Heritage Resource Inventory Record Number:** 232

**Ward:** 1



#### Design/Physical Description:

- Drive shed with board-and-batten cladding

#### Historical Description:

- Built circa 1875-1899

#### Contextual Description: (See reverse for aerial photo)

- The property is in Belfountain which developed around an early grist mill and saw mill on the West Credit River. With its first plan of subdivision in 1853 the village started to evolve, influenced by water-based industry, nearby quarrying, the arrival of the railway and the later interests in recreational activities.

#### Associated Structures:

**Form Completion Date:** March 20, 2018

**Photo Date:** March 2018







## PROPERTY SUMMARY

### CANDIDATE FOR LISTING ON HERITAGE REGISTER

**Address:** 57 Scott Street, BELFOUNTAIN

**Roll Number:** 2124030009064000000

**Legal Description:** PLAN CAL20 LOTS 24,25

**Built Heritage Resource Inventory Record Number:** 227

**Ward:** 1



#### Design/Physical Description:

- 1 storey house, Neoclassical style, frame construction

#### Historical Description:

- Built circa 1875-1899

#### Contextual Description: (See reverse for aerial photo)

- The property is in Belfountain which developed around an early grist mill and saw mill on the West Credit River. With its first plan of subdivision in 1853 the village started to evolve, influenced by water-based industry, nearby quarrying, the arrival of the railway and the later interests in recreational activities.

#### Associated Structures:

**Form Completion Date:** March 20, 2018

**Photo Date:** March 2018







## PROPERTY SUMMARY

### CANDIDATE FOR LISTING ON HERITAGE REGISTER

**Address:** 67 Scott Street, BELFOUNTAIN

**Roll Number:** 2124030009065000000

**Legal Description:** CON 5 WHS PT E LOT 10 PLAN CAL20 BLK B LOT 23

**Built Heritage Resource Inventory Record Number:** 226

**Ward:** 1



#### Design/Physical Description:

- 1½ storey house, Neoclassical style, frame construction, board-and-batten exterior cladding

#### Historical Description:

- Built circa 1875-1899

#### Contextual Description: (See reverse for aerial photo)

- The property is in Belfountain which developed around an early grist mill and saw mill on the West Credit River. With its first plan of subdivision in 1853 the village started to evolve, influenced by water-based industry, nearby quarrying, the arrival of the railway and the later interests in recreational activities.

#### Associated Structures:

**Form Completion Date:** March 20, 2018

**Photo Date:** March 2018







## PROPERTY SUMMARY

### CANDIDATE FOR LISTING ON HERITAGE REGISTER

**Address:** Mississauga Road, BELFOUNTAIN

**Roll Number:** 212403000829300

**Legal Description:** CALEDON CON 5 WHS PT LOT 9 RP 43R20408 PART 4 PART PT 2

**Built Heritage Resource Inventory Record Number:** 259

**Ward:** 1



#### Design/Physical Description:

- Silo Agricultural ruin

#### Historical Description:

- Built circa 1900-1924

#### Contextual Description: (See reverse for aerial photo)

- The property is in Belfountain which developed around an early grist mill and saw mill on the West Credit River. With its first plan of subdivision in 1853 the village started to evolve, influenced by water-based industry, nearby quarrying, the arrival of the railway and the later interests in recreational activities.

#### Associated Structures:

**Form Completion Date:** March 20, 2018

**Photo Date:** May 2018







## PROPERTY SUMMARY

### CANDIDATE FOR LISTING ON HERITAGE REGISTER

**Address:** 14189 Creditview Road, CHELTENHAM

**Roll Number:** 212412000202800

**Legal Description:** CON 3 WHS PT LOTS 28,29,

**Built Heritage Resource Inventory Record Number:** 48

**Ward:** 2



#### Design/Physical Description:

- Cemetery

#### Historical Description:

- Established pre-1850

#### Contextual Description: (See reverse for aerial photo)

- The property is in the community that started to evolve in the 1840s around the Credit River grist mill and saw mill, built by millwright Charles Haines, the area's earliest settler, who took up land in 1820. Haines named the settlement 'Cheltenham' after his birthplace in England. In the 1870s, both the Hamilton & Northwestern Railway and the Credit Valley Railway stopped in Cheltenham.

#### Associated Structures:


**Form Completion Date:** March 22, 2018

**Photo Date:** March 2018







<b>PROPERTY SUMMARY</b>	
<b>CANDIDATE FOR LISTING ON HERITAGE REGISTER</b>	
<b>Address:</b> 14253 Creditview Road, CHELTENHAM	
<b>Roll Number:</b> 212412000202900	
<b>Legal Description:</b> CON 3 WHS PT LOT 29	
<b>Built Heritage Resource Inventory Record Number:</b> 47	<b>Ward:</b> 2
	
<b>Design/Physical Description:</b> <ul style="list-style-type: none"> <li>○ 2 storey house, Edwardian Classical style, red brick, characteristic hip roof, verandah is now enclosed</li> </ul>	
<b>Historical Description:</b> <ul style="list-style-type: none"> <li>○ Built circa 1900-1924</li> </ul>	
<b>Contextual Description:</b> (See reverse for aerial photo) <ul style="list-style-type: none"> <li>○ The property is in the community that started to evolve in the 1840s around the Credit River grist mill and saw mill, built by millwright Charles Haines, the area's earliest settler, who took up land in 1820. Haines named the settlement 'Cheltenham' after his birthplace in England. In the 1870s, both the Hamilton &amp; Northwestern Railway and the Credit Valley Railway stopped in Cheltenham.</li> </ul>	
<b>Associated Structures:</b>	
<b>Form Completion Date:</b> March 22, 2018	<b>Photo Date:</b> March 2018







## PROPERTY SUMMARY

### CANDIDATE FOR LISTING ON HERITAGE REGISTER

**Address:** 14299 Creditview Road, CHELTENHAM

**Roll Number:** 212412000203200

**Legal Description:** CON 3 WHS PT LOT 29

**Built Heritage Resource Inventory Record Number:** 45

**Ward:** 2



#### Design/Physical Description:

- 1½ storey house, L plan, Gothic Revival style, red brick with contrasting yellow brick quoins

#### Historical Description:

- Built circa 1870
- It pre-dates the adjacent church and later became the Methodist Church manse

#### Contextual Description: (See reverse for aerial photo)

- The property is in the community that started to evolve in the 1840s around the Credit River grist mill and saw mill, built by millwright Charles Haines, the area's earliest settler, who took up land in 1820. Haines named the settlement 'Cheltenham' after his birthplace in England. In the 1870s, both the Hamilton & Northwestern Railway and the Credit Valley Railway stopped in Cheltenham.

#### Associated Structures:


**Form Completion Date:** March 22, 2018

**Photo Date:** March 2018

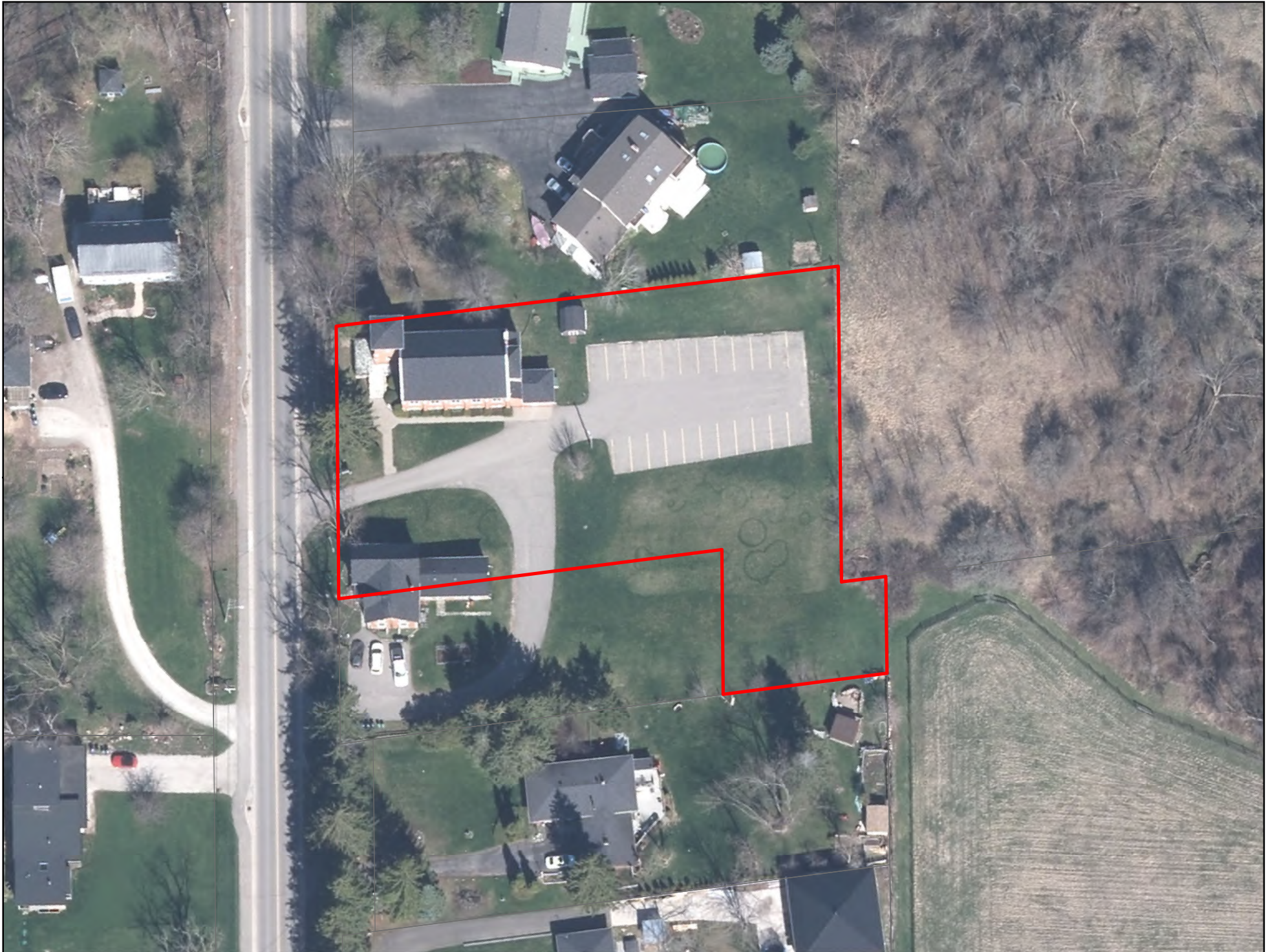






<b>PROPERTY SUMMARY</b>	
<b>CANDIDATE FOR LISTING ON HERITAGE REGISTER</b>	
<b>Address:</b> 14309 Creditview Road, CHELTENHAM	
<b>Roll Number:</b> 212412000203200	
<b>Legal Description:</b> CON 3 WHS PT LOT 29	
<b>Built Heritage Resource Inventory Record Number:</b> 44	<b>Ward:</b> 2
	
<b>Design/Physical Description:</b> <ul style="list-style-type: none"> <li>○ Cheltenham Methodist Church, red brick, Modern Gothic style</li> </ul>	
<b>Historical Description:</b> <ul style="list-style-type: none"> <li>○ Built circa 1907 date stone</li> </ul>	
<b>Contextual Description:</b> (See reverse for aerial photo) <ul style="list-style-type: none"> <li>○ The property is in the community that started to evolve in the 1840s around the Credit River grist mill and saw mill, built by millwright Charles Haines, the area's earliest settler, who took up land in 1820. Haines named the settlement 'Cheltenham' after his birthplace in England. In the 1870s, both the Hamilton &amp; Northwestern Railway and the Credit Valley Railway stopped in Cheltenham.</li> </ul>	
<b>Associated Structures:</b>	
<b>Form Completion Date:</b> March 22, 2018	<b>Photo Date:</b> March 2018







## PROPERTY SUMMARY

### CANDIDATE FOR LISTING ON HERITAGE REGISTER

**Address:** 14365 Creditview Road, CHELTENHAM

**Roll Number:** 2124120002036000000

**Legal Description:** CON 3 WHS PT LOT 29

**Built Heritage Resource Inventory Record Number:** 42

**Ward:** 2



#### Design/Physical Description:

- 1½ storey Neoclassical style house, frame construction, centre entry
- Rear gable above a shed roof addition

#### Historical Description:

- Period of construction: 1850-1874

#### Contextual Description: (See reverse for aerial photo)

- The property is in the community that started to evolve in the 1840s around the Credit River grist mill and saw mill, built by millwright Charles Haines, the area's earliest settler, who took up land in 1820. Haines named the settlement 'Cheltenham' after his birthplace in England. In the 1870s, both the Hamilton & Northwestern Railway and the Credit Valley Railway stopped in Cheltenham.

#### Associated Structures:

**Form Completion Date:** March 22, 2018

**Photo Date:** March 2018







## PROPERTY SUMMARY

### CANDIDATE FOR LISTING ON HERITAGE REGISTER

**Address:** 14387 Creditview Road, CHELTENHAM

**Roll Number:** 212412000203900

**Legal Description:** PLAN CH7 LOTS 62,63

**Built Heritage Resource Inventory Record Number:** 38

**Ward:** 2



#### Design/Physical Description:

- 2 storey, Edwardian Classical style '4 square' house, characteristic hip roof with gable windows, asymmetrical floor plan, full width verandah
- Frame construction which is unusual for the style

#### Historical Description:

- Built circa 1915 plaque

#### Contextual Description: (See reverse for aerial photo)

- The property is in the community that started to evolve in the 1840s around the Credit River grist mill and saw mill, built by millwright Charles Haines, the area's earliest settler, who took up land in 1820. Haines named the settlement 'Cheltenham' after his birthplace in England. In the 1870s, both the Hamilton & Northwestern Railway and the Credit Valley Railway stopped in Cheltenham.

#### Associated Structures:

**Form Completion Date:** March 22, 2018

**Photo Date:** March 2018







## PROPERTY SUMMARY

### CANDIDATE FOR LISTING ON HERITAGE REGISTER

**Address:** 14427 Creditview Road, CHELTENHAM

**Roll Number:** 212412000204500

**Legal Description:** PLAN CH7 LOTS 78,79

**Built Heritage Resource Inventory Record Number:** 31

**Ward:** 2



#### Design/Physical Description:

- 2 storey house, Neoclassical style, full width verandah, frame construction

#### Historical Description:

- Built circa 1850-1874

#### Contextual Description: (See reverse for aerial photo)

- The property is in the community that started to evolve in the 1840s around the Credit River grist mill and saw mill, built by millwright Charles Haines, the area's earliest settler, who took up land in 1820. Haines named the settlement 'Cheltenham' after his birthplace in England. In the 1870s, both the Hamilton & Northwestern Railway and the Credit Valley Railway stopped in Cheltenham.

#### Associated Structures:

**Form Completion Date:** March 22, 2018

**Photo Date:** March 2018







## PROPERTY SUMMARY

### CANDIDATE FOR LISTING ON HERITAGE REGISTER

**Address:** 14460 Creditview Road, CHELTENHAM

**Roll Number:** 212412000208500

**Legal Description:** CON 4 WHS PT LOT 30 PL CH7, LOT 20 PT LOT 19

**Built Heritage Resource Inventory Record Number:** 30

**Ward:** 2



#### Design/Physical Description:

- 1½ storey house, Gothic Revival style, red brick with yellow brick detailing, centre entry, fretwork detailing on gable, paired brackets along eaves

#### Historical Description:

- Built circa 1850-1874

#### Contextual Description: (See reverse for aerial photo)

- The property is in the community that started to evolve in the 1840s around the Credit River grist mill and saw mill, built by millwright Charles Haines, the area's earliest settler, who took up land in 1820. Haines named the settlement 'Cheltenham' after his birthplace in England. In the 1870s, both the Hamilton & Northwestern Railway and the Credit Valley Railway stopped in Cheltenham.

#### Associated Structures:

**Form Completion Date:** March 22, 2018

**Photo Date:** March 2018







## PROPERTY SUMMARY

### CANDIDATE FOR LISTING ON HERITAGE REGISTER

**Address:** 14509 Creditview Road, CHELTENHAM

**Roll Number:** 2124120002047000000

**Legal Description:** PLAN CH7 LOT 86 PT LOT 88 RP 43R9073 PARTS 1,2

**Built Heritage Resource Inventory Record Number:** 28

**Ward:** 2



#### Design/Physical Description:

- 1½ storey house, frame construction, Neoclassical style, centre entry, symmetrically placed lower windows
- Gable windows are modern addition

#### Historical Description:

- Period of construction: 1850-1874

#### Contextual Description: (See reverse for aerial photo)

- The property is in the community that started to evolve in the 1840s around the Credit River grist mill and saw mill, built by millwright Charles Haines, the area's earliest settler, who took up land in 1820. Haines named the settlement 'Cheltenham' after his birthplace in England. In the 1870s, both the Hamilton & Northwestern Railway and the Credit Valley Railway stopped in Cheltenham.

#### Associated Structures:

**Form Completion Date:** March 22, 2018

**Photo Date:** March 2018







## PROPERTY SUMMARY

### CANDIDATE FOR LISTING ON HERITAGE REGISTER

**Address:** 14515 Creditview Road, CHELTENHAM

**Roll Number:** 212412000204800

**Legal Description:** PLAN CH7 LOT 87

**Built Heritage Resource Inventory Record Number:** 27

**Ward:** 2



#### Design/Physical Description:

- 1½ storey house, Gothic Revival style, L plan, front bay window with paired gothic windows in gable above. Gothic window in gable above full width verandah
- Red brick with yellow brick detailing, fretwork trim on gables and verandah

#### Historical Description:

- Period of construction: 1850-1874

#### Contextual Description: (See reverse for aerial photo)

- The property is in the community that started to evolve in the 1840s around the Credit River grist mill and saw mill, built by millwright Charles Haines, the area's earliest settler, who took up land in 1820. Haines named the settlement 'Cheltenham' after his birthplace in England. In the 1870s, both the Hamilton & Northwestern Railway and the Credit Valley Railway stopped in Cheltenham.

#### Associated Structures:

**Form Completion Date:** March 22, 2018

**Photo Date:** March 2018







<b>PROPERTY SUMMARY</b>	
<b>CANDIDATE FOR LISTING ON HERITAGE REGISTER</b>	
<b>Address:</b> 14529 Creditview Road, CHELTENHAM	
<b>Roll Number:</b> 212412000204900	
<b>Legal Description:</b> PLAN CH 7 PT LOT 88 & 89 PT, LANE	
<b>Built Heritage Resource Inventory Record Number:</b> 26	<b>Ward:</b> 2
	
<b>Design/Physical Description:</b> <ul style="list-style-type: none"> <li>○ 1½ storey house, Neoclassical in style with single storey addition to the rear</li> <li>○ Projecting bay window with cedar single roof, roughcast plaster exterior</li> <li>○ The house faces south rather than to the road</li> </ul>	
<b>Historical Description:</b> <ul style="list-style-type: none"> <li>○ Built circa mid-1850s</li> </ul>	
<b>Contextual Description:</b> (See reverse for aerial photo) <ul style="list-style-type: none"> <li>○ The property is in the community that started to evolve in the 1840s around the Credit River grist mill and saw mill, built by millwright Charles Haines, the area's earliest settler, who took up land in 1820. Haines named the settlement 'Cheltenham' after his birthplace in England. In the 1870s, both the Hamilton &amp; Northwestern Railway and the Credit Valley Railway stopped in Cheltenham.</li> </ul>	
<b>Associated Structures:</b>	
<b>Form Completion Date:</b> March 22, 2018	<b>Photo Date:</b> May 2017







## PROPERTY SUMMARY

### CANDIDATE FOR LISTING ON HERITAGE REGISTER

**Address:** 14566 Creditview Road, CHELTENHAM

**Roll Number:** 2124120002082000000

**Legal Description:** CON 4 WHS PT LOT 30

**Built Heritage Resource Inventory Record Number:** 24

**Ward:** 2



#### Design/Physical Description:

- 1½ storey house, Edwardian Classical style, offset entry, frame construction, full width verandah, return eaves

#### Historical Description:

- Period of construction: 1900-1924

#### Contextual Description: (See reverse for aerial photo)

- The property is in the community that started to evolve in the 1840s around the Credit River grist mill and saw mill, built by millwright Charles Haines, the area's earliest settler, who took up land in 1820. Haines named the settlement 'Cheltenham' after his birthplace in England. In the 1870s, both the Hamilton & Northwestern Railway and the Credit Valley Railway stopped in Cheltenham.

#### Associated Structures:

**Form Completion Date:** March 22, 2018

**Photo Date:** March 2018







## PROPERTY SUMMARY

### CANDIDATE FOR LISTING ON HERITAGE REGISTER

**Address:** 14585 Creditview Road, CHELTENHAM

**Roll Number:** 212412000205500

**Legal Description:** PLAN CH7 LOT 92

**Built Heritage Resource Inventory Record Number:** 22

**Ward:** 2



#### Design/Physical Description:

- 1½ storey house, Gothic Revival style, centre entry, symmetrically placed windows
- Single storey addition to the rear; verandah has been enclosed with a walk-out above

#### Historical Description:

- Period of construction: 1875-1899

#### Contextual Description: (See reverse for aerial photo)

- The property is in the community that started to evolve in the 1840s around the Credit River grist mill and saw mill, built by millwright Charles Haines, the area's earliest settler, who took up land in 1820. Haines named the settlement 'Cheltenham' after his birthplace in England. In the 1870s, both the Hamilton & Northwestern Railway and the Credit Valley Railway stopped in Cheltenham.

#### Associated Structures:

**Form Completion Date:** March 22, 2018

**Photo Date:** March 2018







## PROPERTY SUMMARY

### CANDIDATE FOR LISTING ON HERITAGE REGISTER

**Address:** 63 Kennedy Road, CHELTENHAM

**Roll Number:** 2124120004084000000

**Legal Description:** CON 3 WHS PT W LOT 31 RP 43R20750 PART 1

**Built Heritage Resource Inventory Record Number:** 18

**Ward:** 2



#### Design/Physical Description:

- 1½ storey house, High Victorian Gothic style, red brick with contrasting yellow brick trim

#### Historical Description:

- Built circa 1875-1899

#### Contextual Description: (See reverse for aerial photo)

- The property is in the community that started to evolve in the 1840s around the Credit River grist mill and saw mill, built by millwright Charles Haines, the area's earliest settler, who took up land in 1820. Haines named the settlement 'Cheltenham' after his birthplace in England. In the 1870s, both the Hamilton & Northwestern Railway and the Credit Valley Railway stopped in Cheltenham.

#### Associated Structures:

**Form Completion Date:** March 22, 2018

**Photo Date:** July 2015







## PROPERTY SUMMARY

### CANDIDATE FOR LISTING ON HERITAGE REGISTER

**Address:** 1431 Mill Street, CHELTENHAM

**Roll Number:** 2124120004121000000

**Legal Description:** PLAN CH7 LOTS 4,5 CHELTENHAM

**Built Heritage Resource Inventory Record Number:** 54

**Ward:** 2



#### Design/Physical Description:

- 1½ storey house, frame construction, Neoclassical in style, centre entry, symmetrically placed windows
- Verandah has been enclosed

#### Historical Description:

- Period of construction: 1850-1874

#### Contextual Description: (See reverse for aerial photo)

- The property is in the community that started to evolve in the 1840s around the Credit River grist mill and saw mill, built by millwright Charles Haines, the area's earliest settler, who took up land in 1820. Haines named the settlement 'Cheltenham' after his birthplace in England. In the 1870s, both the Hamilton & Northwestern Railway and the Credit Valley Railway stopped in Cheltenham.

#### Associated Structures:

**Form Completion Date:** March 22, 2018

**Photo Date:** March 2018







## PROPERTY SUMMARY

### CANDIDATE FOR LISTING ON HERITAGE REGISTER

**Address:** 1443 Mill Street, CHELTENHAM

**Roll Number:** 2124120004122000000

**Legal Description:** PLAN CH7 LOTS 1,2,3

**Built Heritage Resource Inventory Record Number:** 52

**Ward:** 2



#### Design/Physical Description:

- 1½ storey house, late Neoclassical in style, centre entry, red brick cladding, front verandah has been enclosed
- 2 storey addition to the rear

#### Historical Description:

- Built circa 1875-1899

#### Contextual Description: (See reverse for aerial photo)

- The property is in the community that started to evolve in the 1840s around the Credit River grist mill and saw mill, built by millwright Charles Haines, the area's earliest settler, who took up land in 1820. Haines named the settlement 'Cheltenham' after his birthplace in England. In the 1870s, both the Hamilton & Northwestern Railway and the Credit Valley Railway stopped in Cheltenham.

#### Associated Structures:

**Form Completion Date:** March 22, 2018

**Photo Date:** March 2018







<b>PROPERTY SUMMARY</b>	
<b>CANDIDATE FOR LISTING ON HERITAGE REGISTER</b>	
<b>Address:</b> 1510 Station Road, CHELTENHAM	
<b>Roll Number:</b> 2124120004078000000	
<b>Legal Description:</b> PLAN CH7 LOT 76	
<b>Built Heritage Resource Inventory Record Number:</b> 49	<b>Ward:</b> 2
	
<b>Design/Physical Description:</b> <ul style="list-style-type: none"> <li>○ 1½ storey house, Neoclassical in style, frame construction</li> <li>○ Note barn with fieldstone foundation (photo below)</li> </ul>	
<b>Historical Description:</b> <ul style="list-style-type: none"> <li>○ Built pre-1850</li> </ul>	
<b>Contextual Description:</b> (See reverse for aerial photo) <ul style="list-style-type: none"> <li>○ The property is in the community that started to evolve in the 1840s around the Credit River grist mill and saw mill, built by millwright Charles Haines, the area's earliest settler, who took up land in 1820. Haines named the settlement 'Cheltenham' after his birthplace in England. In the 1870s, both the Hamilton &amp; Northwestern Railway and the Credit Valley Railway stopped in Cheltenham.</li> </ul>	
<b>Associated Structures:</b>	
<b>Form Completion Date:</b> March 22, 2018	<b>Photo Date:</b> March 2018











## PROPERTY SUMMARY

### CANDIDATE FOR LISTING ON HERITAGE REGISTER

**Address:** 1814 Station Road, CHELTENHAM

**Roll Number:** 212412000407700

**Legal Description:** CON 3 WHS PT LOT 30 AND RP 43R18125 PARTS 1 7 8 AND PT PART 6

**Built Heritage Resource Inventory Record Number:**1329

**Ward:** 2



#### Design/Physical Description:

- An Edwardian Classical style farmhouse with a synthetic exterior.

#### Historical Description:

- Construction is estimated to have commenced between 1900 and 1924
- Farmhouse appears to have been built before 1946

#### Contextual Description: (See reverse for aerial photo)

- 

#### Notes:

- 

**Associated Structures:** There is one heritage resource on the property

**Form Completion Date:** March 22, 2019

**Photo Date:** 2006







## PROPERTY SUMMARY

### CANDIDATE FOR LISTING ON HERITAGE REGISTER

**Address:** 15696 Airport Road, CALEDON EAST

**Roll Number:** 2124030001061000000

**Legal Description:** CON 6 EHS PT E LOT 2

**Built Heritage Resource Inventory Record Number:** 1723

**Ward:** 3



#### Design/Physical Description:

- 2 storey house, Edwardian Classical style, characteristic hip roof, red brick

#### Historical Description:

- Built circa 1900-1924

#### Contextual Description: (See reverse for aerial photo)

- The property is in the early commercial and residential core of the former Village of Paisley, now called Caledon East. The village evolved from its original agricultural roots with the building of the Hamilton & Northwestern Railway in 1877 and the subsequent Plan of Subdivision registered that same year.

#### Associated Structures:

**Form Completion Date:** March 20, 2018

**Photo Date:** March 2018







## PROPERTY SUMMARY

### CANDIDATE FOR LISTING ON HERITAGE REGISTER

**Address:** 15717 Airport Road, CALEDON EAST

**Roll Number:** 212401000600405

**Legal Description:** ALBION CON 1 PT LOTS 18 19, AND RP 43R37809 PARTS 1 TO 3

**Built Heritage Resource Inventory Record Number:** 558

**Ward:** 3



#### Design/Physical Description:

- 1½ storey 5 bay house, Gothic Revival style, red brick with contrasting brick detailing, gothic window in centre gable

#### Historical Description:

- Built circa 1850-1874

#### Contextual Description: (See reverse for aerial photo)

- The property is in the early commercial and residential core of the former Village of Paisley, now called Caledon East. The village evolved from its original agricultural roots with the building of the Hamilton & Northwestern Railway in 1877 and the subsequent Plan of Subdivision registered that same year.

#### Associated Structures:

**Form Completion Date:** March 20, 2018

**Photo Date:** January 2017







## PROPERTY SUMMARY

### CANDIDATE FOR LISTING ON HERITAGE REGISTER

**Address:** 15825 Airport Road, CALEDON EAST

**Roll Number:** 2124050001020000000

**Legal Description:** CON 1 ALB PT LOT 20

**Built Heritage Resource Inventory Record Number:** 559

**Ward:** 3



#### Design/Physical Description:

- Single storey cottage, Regency style, hip roof, built using rusticated concrete blocks, centre entry
- windows altered

#### Historical Description:

- Built circa 1900-1924

#### Contextual Description: (See reverse for aerial photo)

- The property is in the early commercial and residential core of the former Village of Paisley, now called Caledon East. The village evolved from its original agricultural roots with the building of the Hamilton & Northwestern Railway in 1877 and the subsequent Plan of Subdivision registered that same year.

#### Associated Structures:

**Form Completion Date:** March 20, 2018

**Photo Date:** March 2018







## PROPERTY SUMMARY

### CANDIDATE FOR LISTING ON HERITAGE REGISTER

**Address:** 15831 Airport Road, CALEDON EAST

**Roll Number:** 2124050001021000000

**Legal Description:** CON 1 ALB PT W LOT 20

**Built Heritage Resource Inventory Record Number:** 560

**Ward:** 3



#### Design/Physical Description:

- 1½ storey house, Late Victorian Gothic style, frame construction, verandah enclosed
- Windows altered

#### Historical Description:

- Built circa 1875-1899

#### Contextual Description: (See reverse for aerial photo)

- The property is in the early commercial and residential core of the former Village of Paisley, now called Caledon East. The village evolved from its original agricultural roots with the building of the Hamilton & Northwestern Railway in 1877 and the subsequent Plan of Subdivision registered that same year.

#### Associated Structures:

**Form Completion Date:** March 20, 2018

**Photo Date:** March 2018







## PROPERTY SUMMARY

### CANDIDATE FOR LISTING ON HERITAGE REGISTER

**Address:** 15849 Airport Road, CALEDON EAST

**Roll Number:** 212405000102200

**Legal Description:** CON 1 ALB PT LOT 20

**Built Heritage Resource Inventory Record Number:** 561

**Ward:** 3



#### Design/Physical Description:

- 1½ storey house, Gothic Revival style, frame construction, detailed fretwork and trim on verandah, addition to the rear

#### Historical Description:

- Period of construction: 1875-1899

#### Contextual Description: (See reverse for aerial photo)

- The property is in the early commercial and residential core of the former Village of Paisley, now called Caledon East. The village evolved from its original agricultural roots with the building of the Hamilton & Northwestern Railway in 1877 and the subsequent Plan of Subdivision registered that same year.

#### Associated Structures:

**Form Completion Date:** March 20, 2018

**Photo Date:** March 2018







## PROPERTY SUMMARY

### CANDIDATE FOR LISTING ON HERITAGE REGISTER

**Address:** 15869 Airport Road, CALEDON EAST

**Roll Number:** 212405000102600

**Legal Description:** CON 1 ALB PT LOT 20

**Built Heritage Resource Inventory Record Number:** 564

**Ward:** 3



#### Design/Physical Description:

- 1½ storey house, late Victorian Gothic style, bay window, verandah, shed roof addition to rear, frame construction

#### Historical Description:

- Built circa 1875-1899

#### Contextual Description: (See reverse for aerial photo)

- The property is in the early commercial and residential core of the former Village of Paisley, now called Caledon East. The village evolved from its original agricultural roots with the building of the Hamilton & Northwestern Railway in 1877 and the subsequent Plan of Subdivision registered that same year.

#### Associated Structures:

**Form Completion Date:** March 20, 2018

**Photo Date:** March 2018







## PROPERTY SUMMARY

### CANDIDATE FOR LISTING ON HERITAGE REGISTER

**Address:** 15879 Airport Road, CALEDON EAST

**Roll Number:** 212405000102700

**Legal Description:** CON 1 ALB PT LOT 20

**Built Heritage Resource Inventory Record Number:** 565

**Ward:** 3



#### Design/Physical Description:

- 2 storey house, red brick, late Victorian Gothic style, brick hood (drip) molds above windows, fretwork details on verandah

#### Historical Description:

- Built circa 1875-1899

#### Contextual Description: (See reverse for aerial photo)

- The property is in the early commercial and residential core of the former Village of Paisley, now called Caledon East. The village evolved from its original agricultural roots with the building of the Hamilton & Northwestern Railway in 1877 and the subsequent Plan of Subdivision registered that same year.

#### Associated Structures:

**Form Completion Date:** March 20, 2018

**Photo Date:** March 2018







## PROPERTY SUMMARY

### CANDIDATE FOR LISTING ON HERITAGE REGISTER

**Address:** 15954 Airport Road, CALEDON EAST

**Roll Number:** 212405000108200

**Legal Description:** PLAN E89 PT LOT 21

**Built Heritage Resource Inventory Record Number:** 566

**Ward:** 3



#### Design/Physical Description:

- 1½ storey commercial building, late Victorian Gothic style, frame construction

#### Historical Description:

- Built circa 1875-1899

#### Contextual Description: (See reverse for aerial photo)

- The property is in the early commercial and residential core of the former Village of Paisley, now called Caledon East. The village evolved from its original agricultural roots with the building of the Hamilton & Northwestern Railway in 1877 and the subsequent Plan of Subdivision registered that same year.

#### Associated Structures:

**Form Completion Date:** March 20, 2018

**Photo Date:** March 2018







## PROPERTY SUMMARY

### CANDIDATE FOR LISTING ON HERITAGE REGISTER

**Address:** 15958 Airport Road, CALEDON EAST

**Roll Number:** 212405000108000

**Legal Description:** PLAN CAL15 PT LOT 21 RP, 43R6865 PART 1

**Built Heritage Resource Inventory Record Number:** 567

**Ward:** 3



#### Design/Physical Description:

- 2 storey commercial building, late Victorian Gothic style, frame construction, board-and-batten exterior cladding, return eaves

#### Historical Description:

- Built circa 1875-1900

#### Contextual Description: (See reverse for aerial photo)

- The property is in the early commercial and residential core of the former Village of Paisley, now called Caledon East. The village evolved from its original agricultural roots with the building of the Hamilton & Northwestern Railway in 1877 and the subsequent Plan of Subdivision registered that same year.

#### Associated Structures:

**Form Completion Date:** March 20, 2018

**Photo Date:** March 2018







## PROPERTY SUMMARY

### CANDIDATE FOR LISTING ON HERITAGE REGISTER

**Address:** 16000 Airport Road, CALEDON EAST

**Roll Number:** 212405000107300

**Legal Description:** CON 6 EHS PT LOT 4 PLAN E89, LOT 38

**Built Heritage Resource Inventory Record Number:** 596

**Ward:** 3



### Design/Physical Description:

- Neoclassical style Commercial building, timber frame construction,

### Historical Description:

- Built circa 1896

### Contextual Description: (See reverse for aerial photo)

- The property is in the early commercial and residential core of the former Village of Paisley, now called Caledon East. The village evolved from its original agricultural roots with the building of the Hamilton & Northwestern Railway in 1877 and the subsequent Plan of Subdivision registered that same year.

### Associated Structures:

**Form Completion Date:** March 20, 2018

**Photo Date:** March 2018







## PROPERTY SUMMARY

### CANDIDATE FOR LISTING ON HERITAGE REGISTER

**Address:** 16023 Airport Road, CALEDON EAST

**Roll Number:** 212405000104100

**Legal Description:** PLAN ALB5 PT LOTS 3 AND 4

**Built Heritage Resource Inventory Record Number:** 599

**Ward:** 3



#### Design/Physical Description:

- 2 storey commercial building, late Victorian Gothic style, frame construction, offset front entry

#### Historical Description:

- Built circa 1890s

#### Contextual Description: (See reverse for aerial photo)

- The property is in the early commercial and residential core of the former Village of Paisley, now called Caledon East. The village evolved from its original agricultural roots with the building of the Hamilton & Northwestern Railway in 1877 and the subsequent Plan of Subdivision registered that same year.

#### Associated Structures:

**Form Completion Date:** March 20, 2018

**Photo Date:** March 2018







## PROPERTY SUMMARY

### CANDIDATE FOR LISTING ON HERITAGE REGISTER

**Address:** 16029 Airport Road, CALEDON EAST

**Roll Number:** 212403000706800

**Legal Description:** PLAN CAL14 BLK 4 LOTS 19-21

**Built Heritage Resource Inventory Record Number:** 601

**Ward:** 3



#### Design/Physical Description:

- 1½ storey house, Gothic Revival style, frame construction, fretwork along centre gable, centre entry, symmetrically placed windows

#### Historical Description:

- Built circa 1875-1899

#### Contextual Description: (See reverse for aerial photo)

- The property is in the early commercial and residential core of the former Village of Paisley, now called Caledon East. The village evolved from its original agricultural roots with the building of the Hamilton & Northwestern Railway in 1877 and the subsequent Plan of Subdivision registered that same year.

#### Associated Structures:

**Form Completion Date:** March 20, 2018

**Photo Date:** March 2018







## PROPERTY SUMMARY

### CANDIDATE FOR LISTING ON HERITAGE REGISTER

**Address:** 16031 Airport Road, CALEDON EAST

**Roll Number:** 212405000104400

**Legal Description:** PLAN ALB5 PT LOT 6

**Built Heritage Resource Inventory Record Number:** 602

**Ward:** 3



#### Design/Physical Description:

- Single storey Ontario cottage, hip roof, centre entry, symmetrically placed windows, made using rusticated concrete blocks

#### Historical Description:

- Built circa 1900-1924

#### Contextual Description: (See reverse for aerial photo)

- The property is in the early commercial and residential core of the former Village of Paisley, now called Caledon East. The village evolved from its original agricultural roots with the building of the Hamilton & Northwestern Railway in 1877 and the subsequent Plan of Subdivision registered that same year.

#### Associated Structures:

**Form Completion Date:** March 20, 2018

**Photo Date:** March 2018







## PROPERTY SUMMARY

### CANDIDATE FOR LISTING ON HERITAGE REGISTER

**Address:** 16036 Airport Road, CALEDON EAST

**Roll Number:** 212405000106600

**Legal Description:** PLAN CAL4 PT LOT 3 RP, 43R11187 PART 1

**Built Heritage Resource Inventory Record Number:** 605

**Ward:** 3



#### Design/Physical Description:

- 1½ storey house, Gothic Revival style, fretwork along centre gable and verandah, bay window
- Built using local Caledon East yellow brick

#### Historical Description:

- Built circa 1891

#### Contextual Description: (See reverse for aerial photo)

- The property is in the early commercial and residential core of the former Village of Paisley, now called Caledon East. The village evolved from its original agricultural roots with the building of the Hamilton & Northwestern Railway in 1877 and the subsequent Plan of Subdivision registered that same year.

#### Associated Structures:

**Form Completion Date:** March 20, 2018

**Photo Date:** March 2018







## PROPERTY SUMMARY

### CANDIDATE FOR LISTING ON HERITAGE REGISTER

**Address:** 16041 Airport Road, CALEDON EAST

**Roll Number:** 212405000104700

**Legal Description:** CON 1 ALB PT LOT 21 PLAN, ALB5 LOTS 7,8 PT LOT 6

**Built Heritage Resource Inventory Record Number:** 606

**Ward:** 3



#### Design/Physical Description:

- 2 storey house, Edwardian Classical style, 'L' plan, red brick, characteristic hip roof and dormer window, classical columns supporting verandah roof

#### Historical Description:

- Built circa 1890s

#### Contextual Description: (See reverse for aerial photo)

- The property is in the early commercial and residential core of the former Village of Paisley, now called Caledon East. The village evolved from its original agricultural roots with the building of the Hamilton & Northwestern Railway in 1877 and the subsequent Plan of Subdivision registered that same year.

#### Associated Structures:

**Form Completion Date:** March 20, 2018

**Photo Date:** March 2018







## PROPERTY SUMMARY

### CANDIDATE FOR LISTING ON HERITAGE REGISTER

**Address:** 16048 Airport Road, CALEDON EAST

**Roll Number:** 212405000106500

**Legal Description:** CON 6 EHS PT E LOT 4 PLAN, CAL4 LOT 4 PT LOT 3 RP

**Built Heritage Resource Inventory Record Number:** 607

**Ward:** 3



#### Design/Physical Description:

- 2 storey house, late Victorian Gothic style, red brick veneer
- converted into commercial store, window and entry configuration altered

#### Historical Description:

- Built circa 1870. Called the Bradley Building after Susannah Bradley who purchased it as her home in 1892.

#### Contextual Description: (See reverse for aerial photo)

- The property is in the early commercial and residential core of the former Village of Paisley, now called Caledon East. The village evolved from its original agricultural roots with the building of the Hamilton & Northwestern Railway in 1877 and the subsequent Plan of Subdivision registered that same year.

#### Associated Structures:

**Form Completion Date:** March 20, 2018

**Photo Date:** March 2018







## PROPERTY SUMMARY

### CANDIDATE FOR LISTING ON HERITAGE REGISTER

**Address:** 16051 Airport Road, CALEDON EAST

**Roll Number:** 212405000104800

**Legal Description:** PLAN ALB5 LOTS 9,10 PT LT 11

**Built Heritage Resource Inventory Record Number:** 608

**Ward:** 3



#### Design/Physical Description:

- 1½ storey house, high Victorian Gothic style, 'L' plan, large bay window, centre gable with round-top entry door, verandah
- Made using local yellow brick

#### Historical Description:

- Built circa 1875-1899

#### Contextual Description: (See reverse for aerial photo)

- The property is in the early commercial and residential core of the former Village of Paisley, now called Caledon East. The village evolved from its original agricultural roots with the building of the Hamilton & Northwestern Railway in 1877 and the subsequent Plan of Subdivision registered that same year.

#### Associated Structures:

**Form Completion Date:** March 20, 2018

**Photo Date:** March 2018







## PROPERTY SUMMARY

### CANDIDATE FOR LISTING ON HERITAGE REGISTER

**Address:** 16054 Airport Road, CALEDON EAST

**Roll Number:** 2124050001062000000

**Legal Description:** PLAN CAL4 LOT 7

**Built Heritage Resource Inventory Record Number:** 610

**Ward:** 3



#### Design/Physical Description:

- 1½ storey house, Neoclassical style, centre entry, symmetrically placed windows, frame construction

#### Historical Description:

- Built circa 1875-1899

#### Contextual Description: (See reverse for aerial photo)

- The property is in the early commercial and residential core of the former Village of Paisley, now called Caledon East. The village evolved from its original agricultural roots with the building of the Hamilton & Northwestern Railway in 1877 and the subsequent Plan of Subdivision registered that same year.

#### Associated Structures:

**Form Completion Date:** March 20, 2018

**Photo Date:** March 2018







## PROPERTY SUMMARY

### CANDIDATE FOR LISTING ON HERITAGE REGISTER

**Address:** 16060 Airport Road, CALEDON EAST

**Roll Number:** 212405000106200

**Legal Description:** PLAN CAL4 LOT 7

**Built Heritage Resource Inventory Record Number:** 611

**Ward:** 3



#### Design/Physical Description:

- 2 storey house, Edwardian Classical style, characteristic pyramidal hip roof with dormer, 'L' plan with enclosed verandah above the 'L', built using rusticated concrete blocks laid with red mortar
- Enclosed front entry appears to lead to separate apartment unit

#### Historical Description:

- Built circa early 1920s for James Donaldson as residence and undertaking establishment

#### Contextual Description: (See reverse for aerial photo)

- The property is in the early commercial and residential core of the former Village of Paisley, now called Caledon East. The village evolved from its original agricultural roots with the building of the Hamilton & Northwestern Railway in 1877 and the subsequent Plan of Subdivision registered that same year.

#### Associated Structures:

**Form Completion Date:** March 20, 2018

**Photo Date:** March 2018







## PROPERTY SUMMARY

### CANDIDATE FOR LISTING ON HERITAGE REGISTER

**Address:** 16075 Airport Road, CALEDON EAST

**Roll Number:** 212405000105200

**Legal Description:** PLAN ALB5 LOT 14 PT LOT 15

**Built Heritage Resource Inventory Record Number:** 613

**Ward:** 3



#### Design/Physical Description:

- 1½ storey house, high Victorian Gothic style, 'L' plan, fretwork across centre front gable, verandah

#### Historical Description:

- Built circa 1875-1899

#### Contextual Description: (See reverse for aerial photo)

- The property is in the early commercial and residential core of the former Village of Paisley, now called Caledon East. The village evolved from its original agricultural roots with the building of the Hamilton & Northwestern Railway in 1877 and the subsequent Plan of Subdivision registered that same year.

#### Associated Structures:

**Form Completion Date:** March 20, 2018

**Photo Date:** March 2018







## PROPERTY SUMMARY

### CANDIDATE FOR LISTING ON HERITAGE REGISTER

**Address:** 16219 Airport Road, CALEDON EAST

**Roll Number:** 212401000625100

**Legal Description:** CON 1 ALB PT LOT 22 RP, 43R1149 PART 1

**Built Heritage Resource Inventory Record Number:** 622

**Ward:** 3



#### Design/Physical Description:

- 2 storey house, Edwardian Classical style, '4 square' with characteristic pyramidal hip roof
- verandah now enclosed

#### Historical Description:

- Built circa 1900-1924

#### Contextual Description: (See reverse for aerial photo)

- The property is in the early commercial and residential core of the former Village of Paisley, now called Caledon East. The village evolved from its original agricultural roots with the building of the Hamilton & Northwestern Railway in 1877 and the subsequent Plan of Subdivision registered that same year.

#### Associated Structures:

**Form Completion Date:** March 20, 2018

**Photo Date:** March 2018







## PROPERTY SUMMARY

### CANDIDATE FOR LISTING ON HERITAGE REGISTER

**Address:** 2 Cedar Street, CALEDON EAST

**Roll Number:** 2124050001107000000

**Legal Description:** PLAN CAL15 LOT 1 CAL EAST AKA PLAN E89

**Built Heritage Resource Inventory Record Number:** 573

**Ward:** 3



#### Design/Physical Description:

- 1½ storey house, high Victorian Gothic style, bay window, fretwork detailing on verandah and along gables, round-top windows with hood (drip) molds
- Originally wood clad, the exterior is now clad in cement board

#### Historical Description:

- Built circa 1880s for the Burrell Family

#### Contextual Description: (See reverse for aerial photo)

- The property is in the early commercial and residential core of the former Village of Paisley, now called Caledon East. The village evolved from its original agricultural roots with the building of the Hamilton & Northwestern Railway in 1877 and the subsequent Plan of Subdivision registered that same year.

#### Associated Structures:

**Form Completion Date:** March 20, 2018

**Photo Date:** March 2018







## PROPERTY SUMMARY

### CANDIDATE FOR LISTING ON HERITAGE REGISTER

**Address:** 3 Cedar Street, CALEDON EAST

**Roll Number:** 2124050002038000000

**Legal Description:** PLAN E89 PT LOTS 43,44

**Built Heritage Resource Inventory Record Number:** 575

**Ward:** 3



#### Design/Physical Description:

- 1½ storey house, late Victorian Gothic style, 'L' plan, wrap-around verandah with intricate fretwork trim and support posts

#### Historical Description:

- Built circa 1875-1899

#### Contextual Description: (See reverse for aerial photo)

- The property is in the early commercial and residential core of the former Village of Paisley, now called Caledon East. The village evolved from its original agricultural roots with the building of the Hamilton & Northwestern Railway in 1877 and the subsequent Plan of Subdivision registered that same year.

#### Associated Structures:

**Form Completion Date:** March 20, 2018

**Photo Date:** March 2018







## PROPERTY SUMMARY

### CANDIDATE FOR LISTING ON HERITAGE REGISTER

**Address:** 5 Cedar Street, CALEDON EAST

**Roll Number:** 2124050002039000000

**Legal Description:** PLAN E89 PT LOTS 43,44

**Built Heritage Resource Inventory Record Number:** 577

**Ward:** 3



#### Design/Physical Description:

- 1½ storey house, Vernacular to the area based on local neoclassical, centre entry, symmetrically placed windows, frame construction

#### Historical Description:

- Built circa 1875-1899

#### Contextual Description: (See reverse for aerial photo)

- The property is in the early commercial and residential core of the former Village of Paisley, now called Caledon East. The village evolved from its original agricultural roots with the building of the Hamilton & Northwestern Railway in 1877 and the subsequent Plan of Subdivision registered that same year.

#### Associated Structures:

**Form Completion Date:** March 20, 2018

**Photo Date:** March 2018







## PROPERTY SUMMARY

### CANDIDATE FOR LISTING ON HERITAGE REGISTER

**Address:** 1 Dufferin Street, CALEDON EAST

**Roll Number:** 2124050001106000000

**Legal Description:** PLAN CAL15 LOT 2 CAL EAST AKA PLAN E89

**Built Heritage Resource Inventory Record Number:** 574

**Ward:** 3



#### Design/Physical Description:

- 1½ storey house, late Neoclassical style, centre entry, frame construction

#### Historical Description:

- Built circa 1875-1899

#### Contextual Description: (See reverse for aerial photo)

- The property is in the early commercial and residential core of the former Village of Paisley, now called Caledon East. The village evolved from its original agricultural roots with the building of the Hamilton & Northwestern Railway in 1877 and the subsequent Plan of Subdivision registered that same year.

#### Associated Structures:

**Form Completion Date:** March 20, 2018

**Photo Date:** March 2018







## PROPERTY SUMMARY

### CANDIDATE FOR LISTING ON HERITAGE REGISTER

**Address:** 6 Dufferin Street, CALEDON EAST

**Roll Number:** 2124050001103000000

**Legal Description:** PLAN CAL15 LOT 5 CAL EAST

**Built Heritage Resource Inventory Record Number:** 581

**Ward:** 3



#### Design/Physical Description:

- 2 storey house, 'L' plan, Edwardian Classical style, characteristic pyramidal hip roof, detailed verandah support columns, red brick

#### Historical Description:

- Built circa 1900-1924

#### Contextual Description: (See reverse for aerial photo)

- The property is in the early commercial and residential core of the former Village of Paisley, now called Caledon East. The village evolved from its original agricultural roots with the building of the Hamilton & Northwestern Railway in 1877 and the subsequent Plan of Subdivision registered that same year.

#### Associated Structures:

**Form Completion Date:** March 20, 2018

**Photo Date:** March 2018







## PROPERTY SUMMARY

### CANDIDATE FOR LISTING ON HERITAGE REGISTER

**Address:** 10 Dufferin Street, CALEDON EAST

**Roll Number:** 2124050001102000000

**Legal Description:** PLAN E89 LOT 7

**Built Heritage Resource Inventory Record Number:** 582

**Ward:** 3



#### Design/Physical Description:

- 1½ storey house, late Victorian Gothic style, offset front entry, wrap-around verandah with classical column supports, frame construction, board-and-batten exterior cladding

#### Historical Description:

- Built circa 1875-1899

#### Contextual Description: (See reverse for aerial photo)

- The property is in the early commercial and residential core of the former Village of Paisley, now called Caledon East. The village evolved from its original agricultural roots with the building of the Hamilton & Northwestern Railway in 1877 and the subsequent Plan of Subdivision registered that same year.

#### Associated Structures:

**Form Completion Date:** March 20, 2018

**Photo Date:** March 2018







## PROPERTY SUMMARY

### CANDIDATE FOR LISTING ON HERITAGE REGISTER

**Address:** 9 Emma Street, CALEDON EAST

**Roll Number:** 2124050002046000000

**Legal Description:** PLAN CAL15 LOTS 19,20 RP 43R3543 PART 2

**Built Heritage Resource Inventory Record Number:** 570

**Ward:** 3



#### Design/Physical Description:

- 2 storey house, Edwardian Classical style, 'L' plan, built using rusticated concrete blocks laid with red mortar, classical column supports for wrap-around verandah

#### Historical Description:

- Built circa 1909

#### Contextual Description: (See reverse for aerial photo)

- The property is in the early commercial and residential core of the former Village of Paisley, now called Caledon East. The village evolved from its original agricultural roots with the building of the Hamilton & Northwestern Railway in 1877 and the subsequent Plan of Subdivision registered that same year.

#### Associated Structures:

**Form Completion Date:** March 20, 2018

**Photo Date:** March 2018







## PROPERTY SUMMARY

### CANDIDATE FOR LISTING ON HERITAGE REGISTER

**Address:** 14 Emma Street, CALEDON EAST

**Roll Number:** 2124050002041000000

**Legal Description:** PLAN CAL15 LOTS 8,9

**Built Heritage Resource Inventory Record Number:** 572

**Ward:** 3



#### Design/Physical Description:

- 2 storey, , late Neoclassical style, frame construction, verandah facing Hamilton & Northwestern railway line

#### Historical Description:

- Built circa 1878, former Paisley House railway hotel
- building is now a residence

#### Contextual Description: (See reverse for aerial photo)

- The property is in the early commercial and residential core of the former Village of Paisley, now called Caledon East. The village evolved from its original agricultural roots with the building of the Hamilton & Northwestern Railway in 1877 and the subsequent Plan of Subdivision registered that same year.

#### Associated Structures:

**Form Completion Date:** March 20, 2018

**Photo Date:** March 2018











## PROPERTY SUMMARY

### CANDIDATE FOR LISTING ON HERITAGE REGISTER

**Address:** 2 Maple Street, CALEDON EAST

**Roll Number:** 2124050001115000000

**Legal Description:** PLAN E89 LOT 59 PT LOT 58

**Built Heritage Resource Inventory Record Number:** 578

**Ward:** 3



#### Design/Physical Description:

- 2 storey house, Edwardian Classical style, characteristic pyramidal hip roof with dormer window, wrap verandah with classical column supports, enclosed sunroom, local yellow brick

#### Historical Description:

- Built circa 1900-1924

#### Contextual Description: (See reverse for aerial photo)

- The property is in the early commercial and residential core of the former Village of Paisley, now called Caledon East. The village evolved from its original agricultural roots with the building of the Hamilton & Northwestern Railway in 1877 and the subsequent Plan of Subdivision registered that same year.

#### Associated Structures:

**Form Completion Date:** March 20, 2018

**Photo Date:** March 2018







## PROPERTY SUMMARY

### CANDIDATE FOR LISTING ON HERITAGE REGISTER

**Address:** 6 McCaffery Lane, CALEDON EAST

**Roll Number:** 2124050002083000000

**Legal Description:** CON 6 EHS PT LOT 4

**Built Heritage Resource Inventory Record Number:** 618

**Ward:** 3



#### Design/Physical Description:

- Single storey Ontario Cottage, hip roof, frame construction, offset front entry

#### Historical Description:

- Built circa 1875-1899

#### Contextual Description: (See reverse for aerial photo)

- The property is in the early commercial and residential core of the former Village of Paisley, now called Caledon East. The village evolved from its original agricultural roots with the building of the Hamilton & Northwestern Railway in 1877 and the subsequent Plan of Subdivision registered that same year.

#### Associated Structures:

**Form Completion Date:** March 20, 2018

**Photo Date:** March 2018







## PROPERTY SUMMARY

### CANDIDATE FOR LISTING ON HERITAGE REGISTER

**Address:** 6018 Old Church Road CALEDON EAST

**Roll Number:** 2124050001164000000

**Legal Description:** PLAN ALB5 PT LOT 1 CAL EAST RP 43R6277 PART 1

**Built Heritage Resource Inventory Record Number:** 555

**Ward:** 3



#### Design/Physical Description:

- 1½ storey house, late Victorian Gothic style, frame construction, centre entry

#### Historical Description:

- Built circa 1875-1899

#### Contextual Description: (See reverse for aerial photo)

- The property is in the early commercial and residential core of the former Village of Paisley, now called Caledon East. The village evolved from its original agricultural roots with the building of the Hamilton & Northwestern Railway in 1877 and the subsequent Plan of Subdivision registered that same year.

#### Associated Structures:

**Form Completion Date:** March 20, 2018

**Photo Date:** March 2018







## PROPERTY SUMMARY

### CANDIDATE FOR LISTING ON HERITAGE REGISTER

**Address:** 6029 Old Church Road CALEDON EAST

**Roll Number:** 2124050001138000000

**Legal Description:** CON 1 ALB PT LOT 20 CALEDON EAST LESS RP 43R23577 PART 8

**Built Heritage Resource Inventory Record Number:** 554

**Ward:** 3



#### Design/Physical Description:

- Church building, Picturesque Gothic style, red brick

#### Historical Description:

- Built circa 1901 by local builder Joseph Proctor

#### Contextual Description: (See reverse for aerial photo)

- The property is in the early commercial and residential core of the former Village of Paisley, now called Caledon East. The village evolved from its original agricultural roots with the building of the Hamilton & Northwestern Railway in 1877 and the subsequent Plan of Subdivision registered that same year.

#### Associated Structures:

**Form Completion Date:** March 20, 2018

**Photo Date:** March 2018







## PROPERTY SUMMARY

### CANDIDATE FOR LISTING ON HERITAGE REGISTER

**Address:** 6032 Old Church Road CALEDON EAST

**Roll Number:** 2124050001161000000

**Legal Description:** PLAN ALB5 LOT 4

**Built Heritage Resource Inventory Record Number:** 553

**Ward:** 3



#### Design/Physical Description:

- 1½ storey house, late Neoclassical style, centre entry, symmetrically placed windows, frame construction

#### Historical Description:

- Built circa 1875-1899

#### Contextual Description: (See reverse for aerial photo)

- The property is in the early commercial and residential core of the former Village of Paisley, now called Caledon East. The village evolved from its original agricultural roots with the building of the Hamilton & Northwestern Railway in 1877 and the subsequent Plan of Subdivision registered that same year.

#### Associated Structures:

**Form Completion Date:** March 20, 2018

**Photo Date:** March 2018







## PROPERTY SUMMARY

### CANDIDATE FOR LISTING ON HERITAGE REGISTER

**Address:** 6066 Old Church Road CALEDON EAST

**Roll Number:** 2124050001158000000

**Legal Description:** CON 1 ALB PT LOT 21 CAL EAST

**Built Heritage Resource Inventory Record Number:** 550

**Ward:** 3



#### Design/Physical Description:

- 1½ storey house, late Neoclassical style, enclosed verandah hides the centre entry

#### Historical Description:

- Built circa 1875-1899

#### Contextual Description: (See reverse for aerial photo)

- The property is in the early commercial and residential core of the former Village of Paisley, now called Caledon East. The village evolved from its original agricultural roots with the building of the Hamilton & Northwestern Railway in 1877 and the subsequent Plan of Subdivision registered that same year.

#### Associated Structures:

**Form Completion Date:** March 20, 2018

**Photo Date:** March 2018







## PROPERTY SUMMARY

### CANDIDATE FOR LISTING ON HERITAGE REGISTER

**Address:** 1 Parsons Avenue, CALEDON EAST

**Roll Number:** 2124050002057000000

**Legal Description:** PLAN CAL15 PT LOTS 30 TO 33

**Built Heritage Resource Inventory Record Number:** 583

**Ward:** 3



#### Design/Physical Description:

- 1½ storey house, 'Bungalow' style, red brick

#### Historical Description:

- Period of construction: 1900-1924

#### Contextual Description: (See reverse for aerial photo)

- The property is in the early commercial and residential core of the former Village of Paisley, now called Caledon East. The village evolved from its original agricultural roots with the building of the Hamilton & Northwestern Railway in 1877 and the subsequent Plan of Subdivision registered that same year.

#### Associated Structures:

**Form Completion Date:** March 20, 2018

**Photo Date:** March 2018







## PROPERTY SUMMARY

### CANDIDATE FOR LISTING ON HERITAGE REGISTER

**Address:** 2 Parsons Avenue, CALEDON EAST

**Roll Number:** 2124050002056000000

**Legal Description:** PLAN CAL15 PT LOT 34

**Built Heritage Resource Inventory Record Number:** 584

**Ward:** 3



#### Design/Physical Description:

- 1½ storey house, Gothic Revival style, frame construction

#### Historical Description:

- Period of Construction: 1875-1899
- Built circa 1877 by John Parsons who registered the first Plan of Subdivision in Caledon East

#### Contextual Description: (See reverse for aerial photo)

- The property is in the early commercial and residential core of the former Village of Paisley, now called Caledon East. The village evolved from its original agricultural roots with the building of the Hamilton & Northwestern Railway in 1877 and the subsequent Plan of Subdivision registered that same year.

#### Associated Structures:

**Form Completion Date:** March 20, 2018

**Photo Date:** March 2018







## PROPERTY SUMMARY

### CANDIDATE FOR LISTING ON HERITAGE REGISTER

**Address:** 7 Parsons Avenue, CALEDON EAST

**Roll Number:** 2124050002060000000

**Legal Description:** PLAN E89 LOT 28

**Built Heritage Resource Inventory Record Number:** 586

**Ward:** 3



#### Design/Physical Description:

- Single storey Ontario Cottage, hip roof, frame construction,
- Roofline has been extended and the space below filled in for additional living space

#### Historical Description:

- Built circa 1875-1899

#### Contextual Description: (See reverse for aerial photo)

- The property is in the early commercial and residential core of the former Village of Paisley, now called Caledon East. The village evolved from its original agricultural roots with the building of the Hamilton & Northwestern Railway in 1877 and the subsequent Plan of Subdivision registered that same year.

#### Associated Structures:

**Form Completion Date:** March 20, 2018

**Photo Date:** March 2018







## PROPERTY SUMMARY

### CANDIDATE FOR LISTING ON HERITAGE REGISTER

**Address:** 9 Parsons Avenue, CALEDON EAST

**Roll Number:** 2124050002061000000

**Legal Description:** PLAN E89 LOT 27

**Built Heritage Resource Inventory Record Number:** 587

**Ward:** 3



#### Design/Physical Description:

- Single storey house, Ontario Cottage, 'Modern Gothic' style, hip roof, centre entry, frame construction
- dormer window (new), windows altered

#### Historical Description:

- Built circa 1875-1899

#### Contextual Description: (See reverse for aerial photo)

- The property is in the early commercial and residential core of the former Village of Paisley, now called Caledon East. The village evolved from its original agricultural roots with the building of the Hamilton & Northwestern Railway in 1877 and the subsequent Plan of Subdivision registered that same year.

#### Associated Structures:

**Form Completion Date:** March 20, 2018

**Photo Date:** March 2018







## PROPERTY SUMMARY

### CANDIDATE FOR LISTING ON HERITAGE REGISTER

**Address:** 11 Parsons Avenue, CALEDON EAST

**Roll Number:** 2124050002062000000

**Legal Description:** PLAN CAL15 LOT 26

**Built Heritage Resource Inventory Record Number:** 588

**Ward:** 3



#### Design/Physical Description:

- Single storey house, Ontario Cottage, Regency style, hip roof, centre entry, frame construction, symmetrically placed front windows

#### Historical Description:

- Built circa 1875-1899

#### Contextual Description: (See reverse for aerial photo)

- The property is in the early commercial and residential core of the former Village of Paisley, now called Caledon East. The village evolved from its original agricultural roots with the building of the Hamilton & Northwestern Railway in 1877 and the subsequent Plan of Subdivision registered that same year.

#### Associated Structures:

**Form Completion Date:** March 20, 2018

**Photo Date:** March 2018







## PROPERTY SUMMARY

### CANDIDATE FOR LISTING ON HERITAGE REGISTER

**Address:** 12 Parsons Avenue, CALEDON EAST

**Roll Number:** 2124050002053000000

**Legal Description:** CON 6 EHS PT E LOT 3 PLAN E89 PT LOTS 47,48

**Built Heritage Resource Inventory Record Number:** 594

**Ward:** 3



#### Design/Physical Description:

- 2 storey house, Edwardian Classical style, frame construction, window in gable end

#### Historical Description:

- Built circa 1900-1924

#### Contextual Description: (See reverse for aerial photo)

- The property is in the early commercial and residential core of the former Village of Paisley, now called Caledon East. The village evolved from its original agricultural roots with the building of the Hamilton & Northwestern Railway in 1877 and the subsequent Plan of Subdivision registered that same year.

#### Associated Structures:

**Form Completion Date:** March 20, 2018

**Photo Date:** March 2018







## PROPERTY SUMMARY

### CANDIDATE FOR LISTING ON HERITAGE REGISTER

**Address:** 13 Parsons Avenue, CALEDON EAST

**Roll Number:** 2124050002063000000

**Legal Description:** PLAN CAL 15 LOT 25 PLAN E89 LOT 25

**Built Heritage Resource Inventory Record Number:** 589

**Ward:** 3



#### Design/Physical Description:

- Single storey house, Ontario Cottage, Regency style, hip roof with dormer, centre entry, frame construction

#### Historical Description:

- Built circa 1875-1899

#### Contextual Description: (See reverse for aerial photo)

- The property is in the early commercial and residential core of the former Village of Paisley, now called Caledon East. The village evolved from its original agricultural roots with the building of the Hamilton & Northwestern Railway in 1877 and the subsequent Plan of Subdivision registered that same year.

#### Associated Structures:

**Form Completion Date:** March 20, 2018

**Photo Date:** March 2018







## PROPERTY SUMMARY

### CANDIDATE FOR LISTING ON HERITAGE REGISTER

**Address:** 15 Parsons Avenue, CALEDON EAST

**Roll Number:** 2124050002064000000

**Legal Description:** CON 6 EHS PT E LOT 3 PLAN E89 LOT 24

**Built Heritage Resource Inventory Record Number:** 590

**Ward:** 3



#### Design/Physical Description:

- Single storey house, Ontario Cottage, Regency style, hip roof with dormer, centre entry, frame construction

#### Historical Description:

- Built circa 1875-1899

#### Contextual Description: (See reverse for aerial photo)

- The property is in the early commercial and residential core of the former Village of Paisley, now called Caledon East. The village evolved from its original agricultural roots with the building of the Hamilton & Northwestern Railway in 1877 and the subsequent Plan of Subdivision registered that same year.

#### Associated Structures:

**Form Completion Date:** March 20, 2018

**Photo Date:** March 2018







## PROPERTY SUMMARY

### CANDIDATE FOR LISTING ON HERITAGE REGISTER

**Address:** 19 Parsons Avenue, CALEDON EAST

**Roll Number:** 2124050002066000000

**Legal Description:** PLAN CAL15 LOT 49

**Built Heritage Resource Inventory Record Number:** 591

**Ward:** 3



#### Design/Physical Description:

- 2 storey house, Edwardian Classical style, characteristic hip roof with dormer window, asymmetric floor plan, verandah with classical column supports

#### Historical Description:

- Built circa 1900-1924

#### Contextual Description: (See reverse for aerial photo)

- The property is in the early commercial and residential core of the former Village of Paisley, now called Caledon East. The village evolved from its original agricultural roots with the building of the Hamilton & Northwestern Railway in 1877 and the subsequent Plan of Subdivision registered that same year.

#### Associated Structures:

**Form Completion Date:** March 20, 2018

**Photo Date:** March 2018







## PROPERTY SUMMARY

### CANDIDATE FOR LISTING ON HERITAGE REGISTER

**Address:** 21 Parsons Avenue, CALEDON EAST

**Roll Number:** 2124050002067000000

**Legal Description:** PLAN CAL15 LOT 50

**Built Heritage Resource Inventory Record Number:** 592

**Ward:** 3



#### Design/Physical Description:

- 2 storey house, Edwardian Classical style, characteristic hip roof, asymmetric floor plan, stucco exterior cladding

#### Historical Description:

- Built circa 1900-1924

#### Contextual Description: (See reverse for aerial photo)

- The property is in the early commercial and residential core of the former Village of Paisley, now called Caledon East. The village evolved from its original agricultural roots with the building of the Hamilton & Northwestern Railway in 1877 and the subsequent Plan of Subdivision registered that same year.

#### Associated Structures:

**Form Completion Date:** March 20, 2018

**Photo Date:** March 2018







## PROPERTY SUMMARY

### CANDIDATE FOR LISTING ON HERITAGE REGISTER

**Address:** 23 Parsons Avenue, CALEDON EAST

**Roll Number:** 2124050002068000000

**Legal Description:** PLAN CAL15 LOTS 51,52

**Built Heritage Resource Inventory Record Number:** 593

**Ward:** 3



#### Design/Physical Description:

- 1½ storey house, late Neoclassical style, frame construction
- front verandah is modern addition
- rusticated concrete block addition to rear (built 1914)

#### Historical Description:

- Built circa 1892 by local builder Joseph Proctor
- Concrete blocks were made by Proctor and White Mills

#### Contextual Description: (See reverse for aerial photo)

- The property is in the early commercial and residential core of the former Village of Paisley, now called Caledon East. The village evolved from its original agricultural roots with the building of the Hamilton & Northwestern Railway in 1877 and the subsequent Plan of Subdivision registered that same year.

#### Associated Structures:

**Form Completion Date:** March 20, 2018

**Photo Date:** March 2018







## PROPERTY SUMMARY

### CANDIDATE FOR LISTING ON HERITAGE REGISTER

**Address:** 27 Parsons Avenue, CALEDON EAST

**Roll Number:** 2124050002069000000

**Legal Description:** PLAN E89 LOT 53

**Built Heritage Resource Inventory Record Number:** 595

**Ward:** 3



#### Design/Physical Description:

- 1½ storey house, late Victorian Gothic style, door to one side, frame construction, board-and-batten exterior cladding

#### Historical Description:

- Built circa 1875-1899

#### Contextual Description: (See reverse for aerial photo)

- The property is in the early commercial and residential core of the former Village of Paisley, now called Caledon East. The village evolved from its original agricultural roots with the building of the Hamilton & Northwestern Railway in 1877 and the subsequent Plan of Subdivision registered that same year.

#### Associated Structures:

**Form Completion Date:** March 20, 2018

**Photo Date:** March 2018







## PROPERTY SUMMARY

### CANDIDATE FOR LISTING ON HERITAGE REGISTER

**Address:** 5 Walker Road, CALEDON EAST

**Roll Number:** 2124050002085120000

**Legal Description:** CON 1 PT LOT 21 PLAN ALB 5 PT LOTS 18 TO 20 RP 43R2550 PART 4

**Built Heritage Resource Inventory Record Number:** 617

**Ward:** 3



#### Design/Physical Description:

- 1½ storey house, originally Neoclassical style, centre entry now enclosed,
- Early timber frame construction

#### Historical Description:

- Built circa 1840s for Elizabeth and Elisha Tarbox, the area's earliest settlers

#### Contextual Description: (See reverse for aerial photo)

- The property is in the early commercial and residential core of the former Village of Paisley, now called Caledon East. The village evolved from its original agricultural roots with the building of the Hamilton & Northwestern Railway in 1877 and the subsequent Plan of Subdivision registered that same year.

#### Associated Structures:

**Form Completion Date:** March 20, 2018

**Photo Date:** March 2018



